

Marvel



Marvel



**Blackout
Collection**

Marvel



**Translucent
Collection**



**Sunscreen
Collection**

**Multiple
Collection**





Marvel

Roller Blinds
Blackout Collection

Roller Blinds
Blackout Collection

ROLLER | ROMAN | PANEL BLINDS

B-01

• Fixing Option



Decorative Cassette



Plain Cassette



Headrail



Direct Fix



Decorative Bottom Rail



Plain Bottom Rail

• Operating Systems



MANUAL



ONE TOUCH UP



REMOTE



SMART PHONE CONTROL

- Colby Top TDBU Blinds gives you the liberty to customize the exact position of your blinds to fit your ideal level of privacy and light control.
- Colby D/N Blinds is a single-window treatment that utilizes both Light Filtering, Complete Blackout or Completely raised for a full view of outside.



Marvel

Roller Blinds
Blackout Collection



Marvel

Marvel

Roller Blinds
Blackout Collection

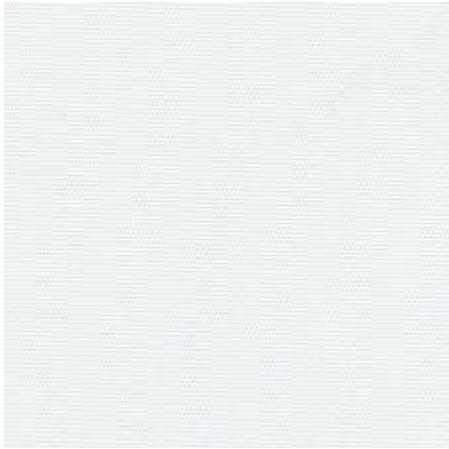


Fluff-4228

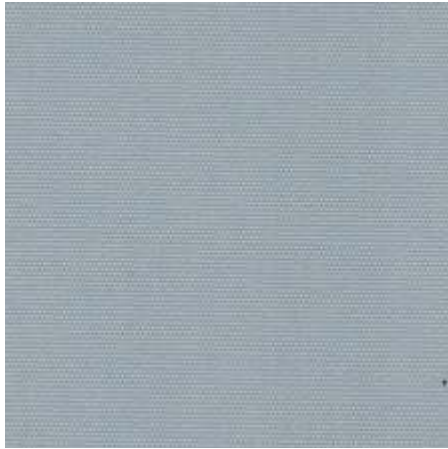
Fabric Specification

Fluff	Technical Details
Composition	: 100% PES with acrylic coating
Woven	: Yes
Coated	: Yes
Weight	: 340 gsm (±5%)
Fabric Thickness	: 0.41mm (±0.05)
Width	: 2.50 mtr.
Light Fastness	: 4 Grade
PVC Free	: Yes
Green Guard	: Yes
Oeko-tex-standard 100	: Yes
Hanging Properties	: Excellent
Tearing Strength	: Very high
Cleaning	: Conditionally cleanable with a damp cloth

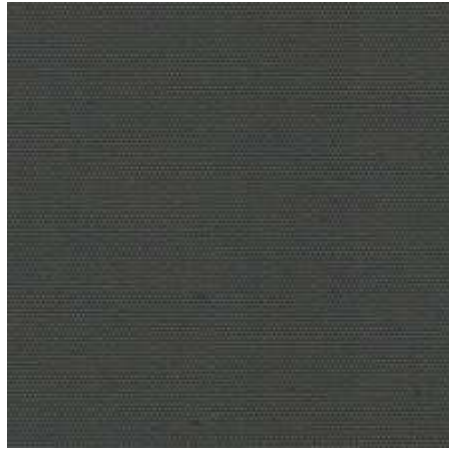




Fluff-4229



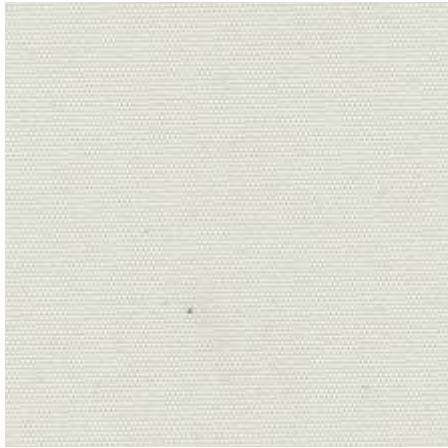
Fluff-4221



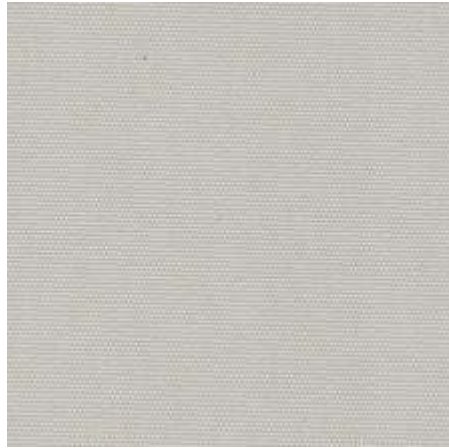
Fluff-4243



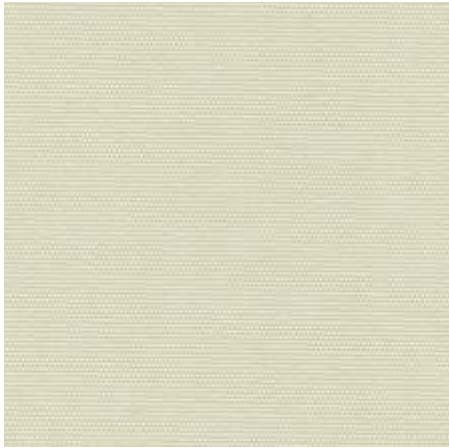
Fluff-4246



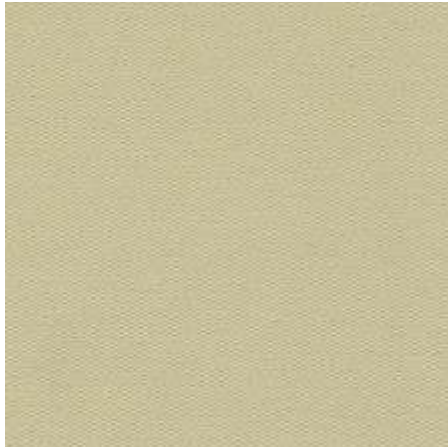
Fluff-4234



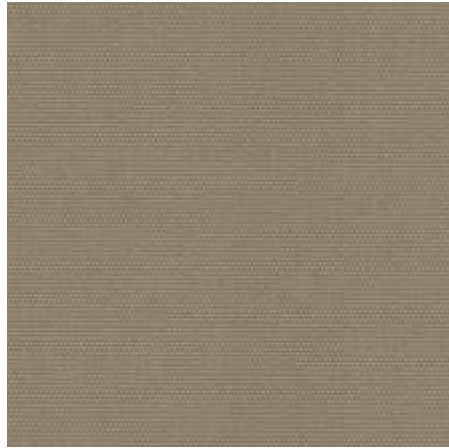
Fluff-4226



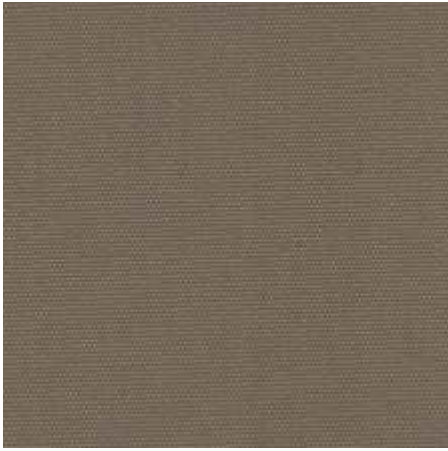
Fluff-4235



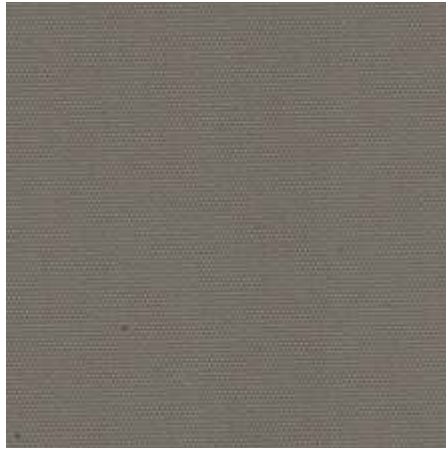
Fluff-4236



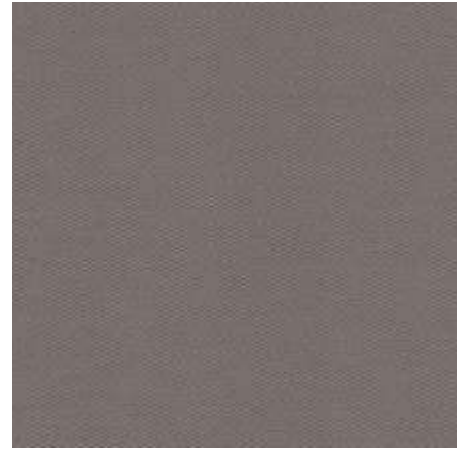
Fluff-4225



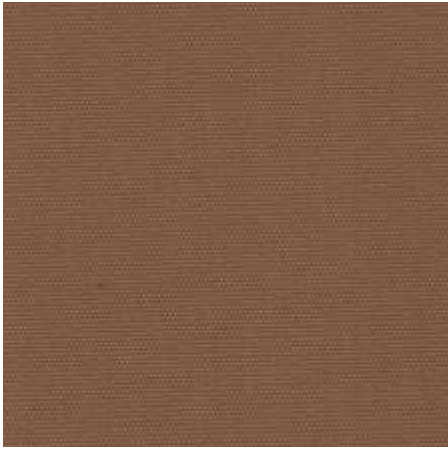
Fluff-4224



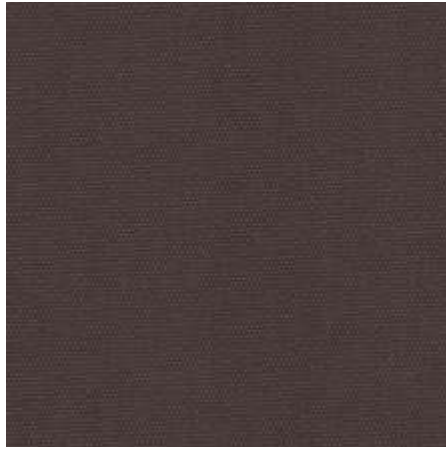
Fluff-4242



Fluff-4227



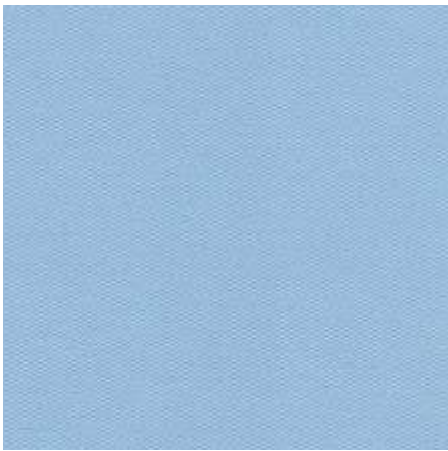
Fluff-4239



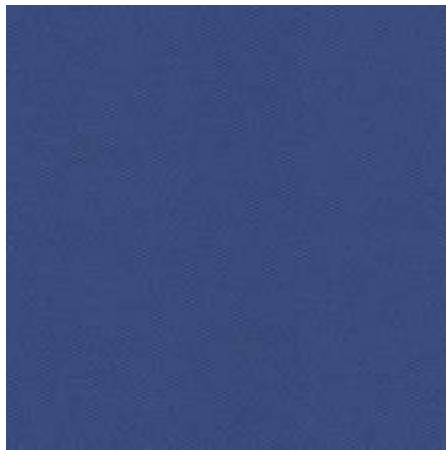
Fluff-4223



Fluff-4244



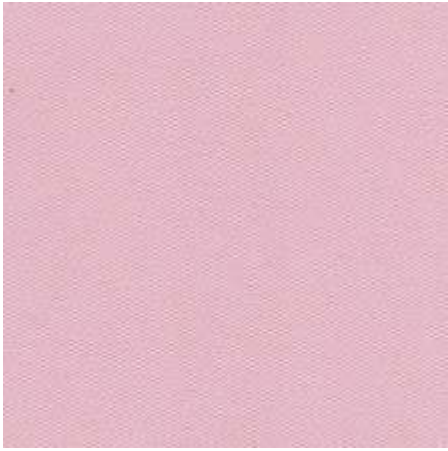
Fluff-4231



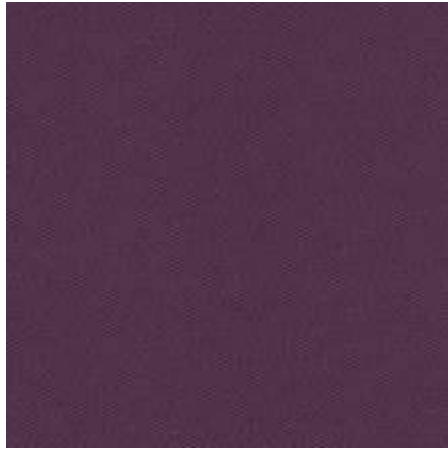
Fluff-4230



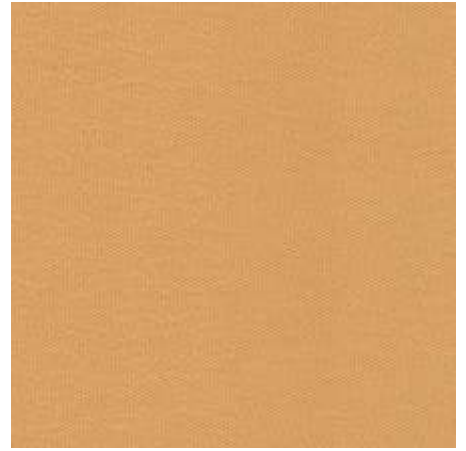
Fluff-4245



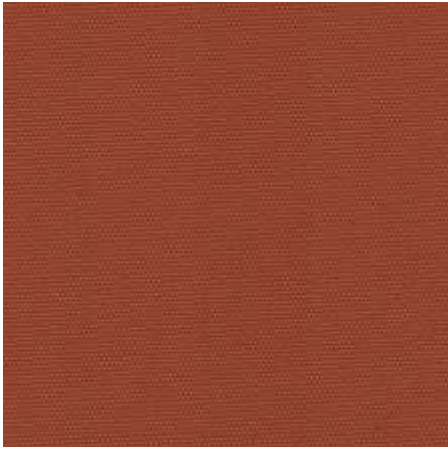
Fluff-4233



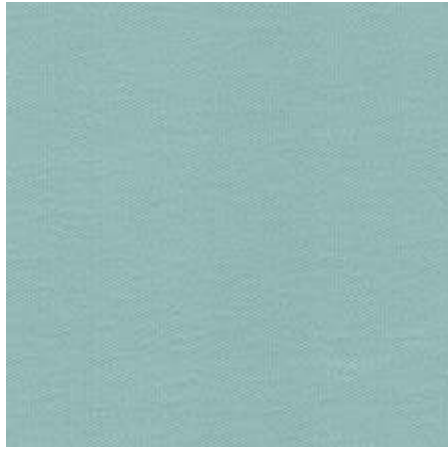
Fluff-4237



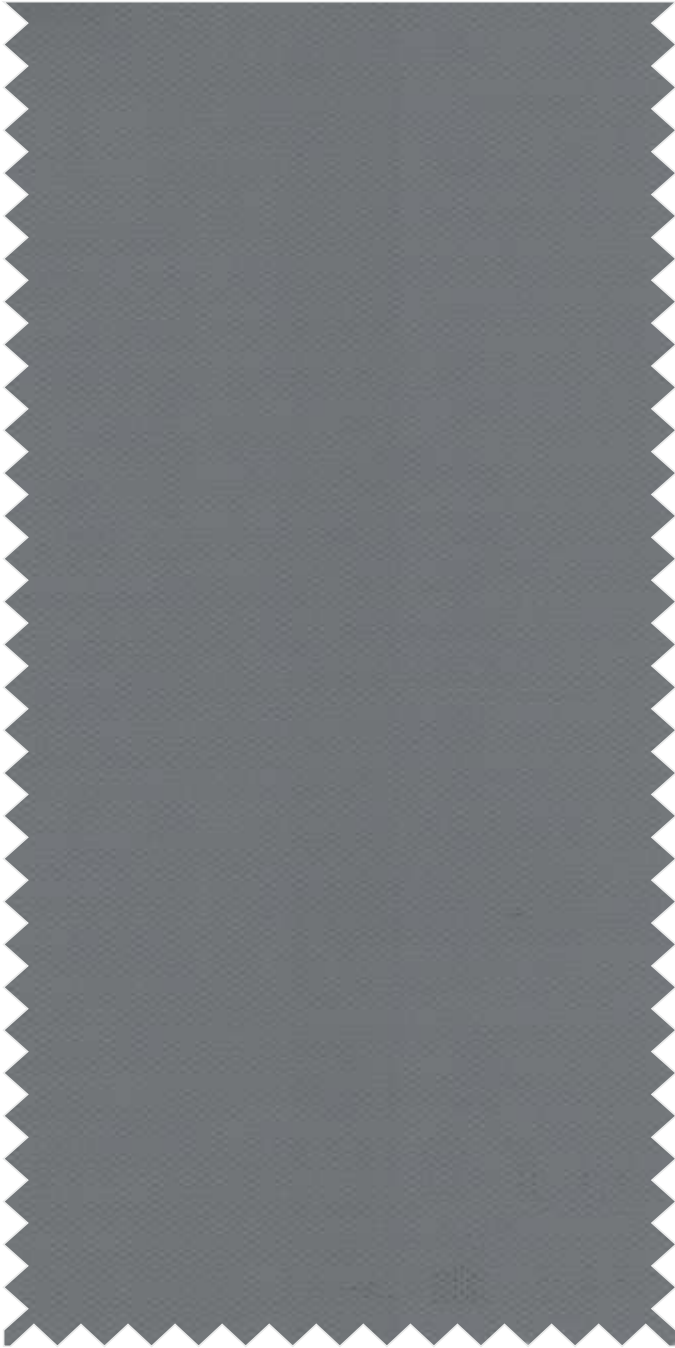
Fluff-4238



Fluff-4239



Fluff-4240



Shein-4208

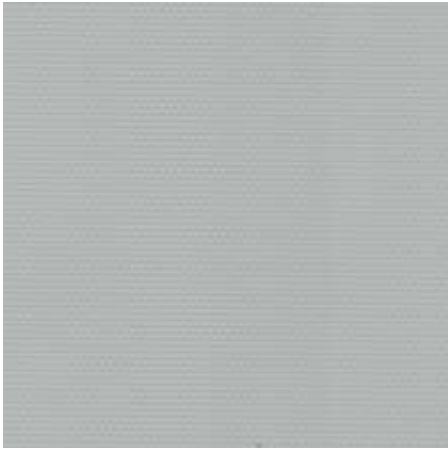
Fabric Specification

Shein	Technical Details
Composition	: 60% PVC 40% Fiberglass
Woven	: Yes
Coated	: Yes
Weight	: 530 gsm (±5%)
Fabric Thickness	: 0.40mm (±0.05)
Width	: 2.50 mtr.
Light Fastness	: 5 Grade
Fire Retardant	: Yes (NFPA-701)
Green Guard	: Yes
Oeko-tex-standard 100	: Yes
Hanging Properties	: Excellent
Tearing Strength	: Very high
Cleaning	: Conditionally cleanable with a damp cloth
Product Options	: Roller / Panel

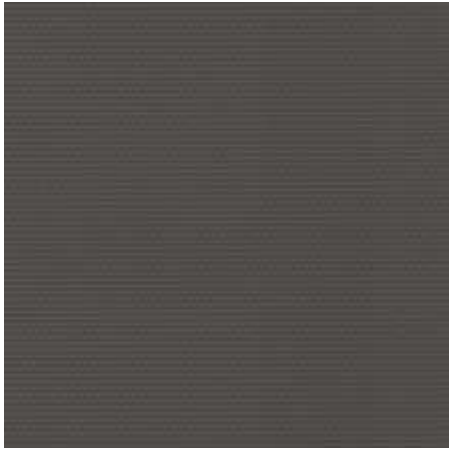




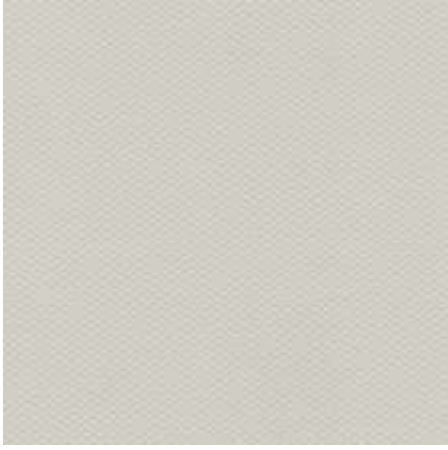
Shein-4201



Shein-4205



Shein-4209



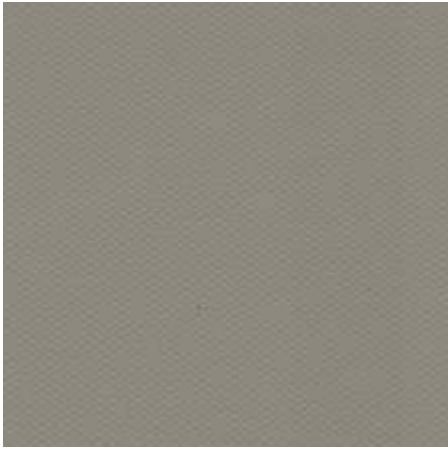
Shein-4203



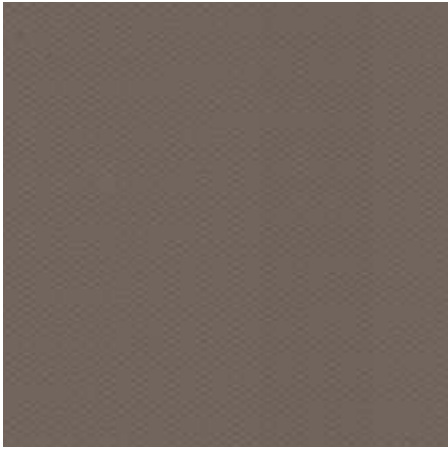
Shein-4202



Shein-4204



Shein-4206



Shein-4207

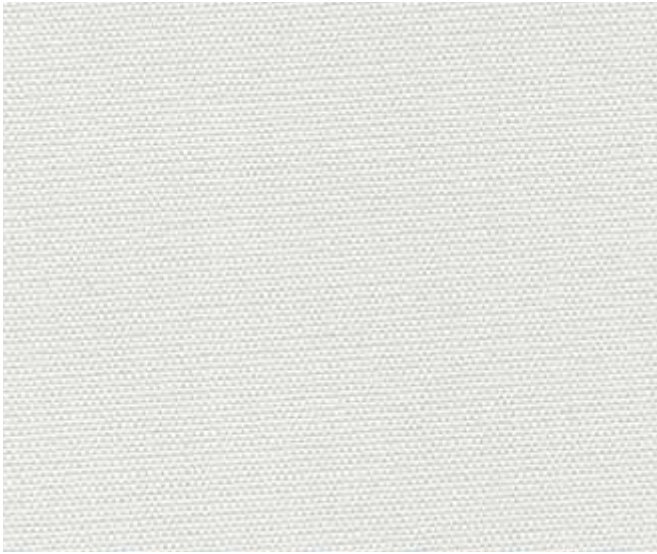


Carlos-4262

Fabric Specification

Carlos	Technical Details
Composition	: 100% PES with acrylic coating
Woven	: Yes
Coated	: Yes
Weight	: 360 gsm (±5%)
Fabric Thickness	: 0.53mm (±0.05)
Width	: 2.40 mtr.
Light Fastness	: 3.5 Grade
PVC Free	: Yes
Green Guard	: Yes
Oeko-tex-standard 100	: Yes
Hanging Properties	: Excellent
Tearing Strength	: Very high
Cleaning	: Conditionally cleanable with a damp cloth





Carlos-4261



Carlos-4263



Carlos-4264



Carlos-4265



Carlos-4266



Marvel

Roller Blinds
Blackout Collection

Roller Blinds
Blackout Collection

ROLLER | ROMAN | PANEL BLINDS

B-02

• Fixing Option



Decorative Cassette



Plain Cassette



Headrail



Direct Fix



Decorative Bottom Rail



Plain Bottom Rail

• Operating Systems



MANUAL



ONE TOUCH UP



REMOTE CONTROL



SMART PHONE CONTROL

- Roman Blinds – Unique Fabric Conversion option offering the versatility to convert Visible fabric to Translucent or Blackout, and Translucent fabric to Blackout by using lining fabric.



Marvel

Roller Blinds
Blackout Collection



Marvel

Roller Blinds
Blackout Collection



Natty - 4171

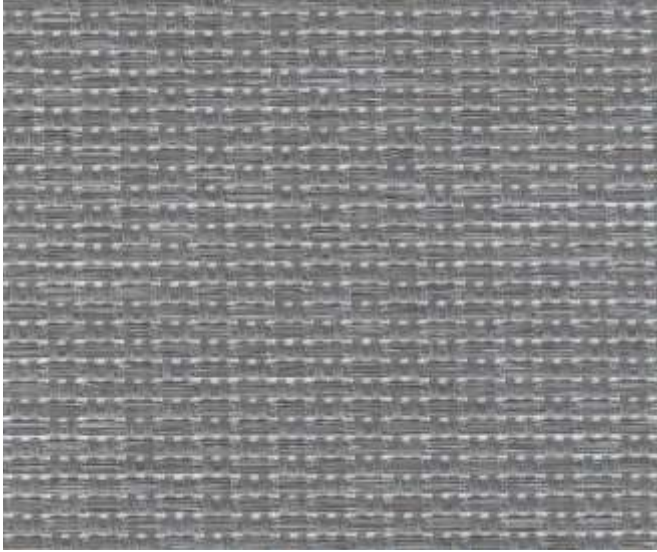
Fabric Specification

Natty	Technical Details
Composition	: 100% Polyester
Woven	: Yes
Coated	: Yes
Weight	: 430 gsm (±5%)
Fabric Thickness	: 0.65mm (±0.05)
Width	: 2.80 mtr.
Light Fastness	: 4 to 5 Grade
PVC Free	: Yes
Hanging Properties	: Excellent
Tearing Strength	: Very high
Cleaning	: Conditionally cleanable with a damp cloth

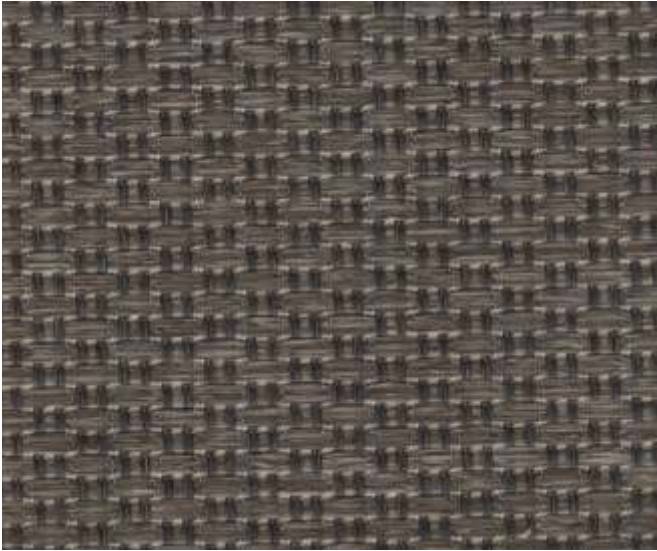




Natty - 4172



Natty - 4173



Natty - 4174



Mist - 4001

Fabric Specification

Mist	Technical Details
Composition	: 100% Polyester
Woven	: Yes
Coated	: Yes
Weight	: 355 gsm ($\pm 5\%$)
Fabric Thickness	: 0.49mm (± 0.05)
Width	: 3.00 mtr.
Light Fastness	: 5 to 6 Grade
Lead Free	: Yes
Hanging Properties	: Excellent
Tearing Strength	: Very high
Cleaning	: Conditionally cleanable with a damp cloth



Light Fastness



Woven Fabric



Coated Fabric



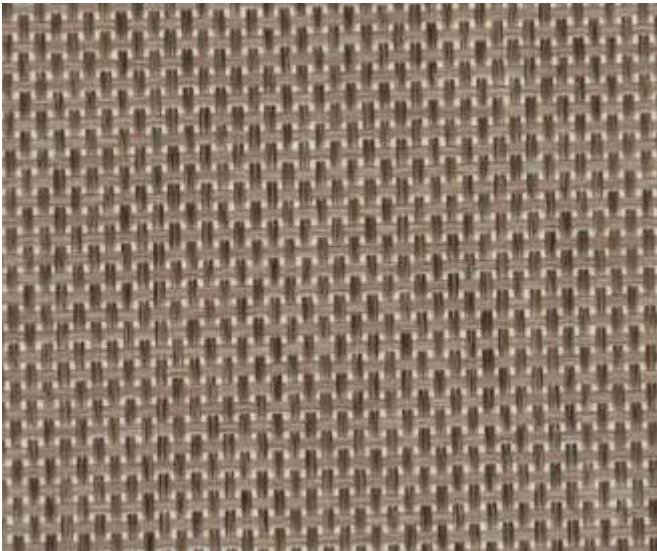
PVC FREE



Mist - 4002



Mist - 4003



Mist - 4004



Mist - 4005



Adonia - 4151

Fabric Specification

Adonia Technical Details

Composition	: 100% Polyester
Woven	: Yes
Coated	: Yes
Weight	: 390 gsm ($\pm 5\%$)
Fabric Thickness	: 0.70mm (± 0.05)
Width	: 2.80 mtr.
Light Fastness	: 4 to 5 Grade
PVC Free	: Yes
Green Guard	: Yes
Hanging Properties	: Excellent
Tearing Strength	: Very high
Cleaning	: Conditionally cleanable with a damp cloth





Adonia - 4152



Adonia - 4153



Adonia - 4154



Adonia - 4155



Fabric Specification

Vittorio	Technical Details
Composition	: 100% PES with acrylic coating
Woven	: Yes
Coated	: Yes
Weight	: 400 gsm (±5%)
Fabric Thickness	: 0.70mm (±0.05)
Width	: 2.80 mtr.
Light Fastness	: 4 to 5 Grade
PVC Free	: Yes
Green Guard	: Yes
Oeko-tex-standard 100	: Yes
Hanging Properties	: Excellent
Tearing Strength	: Very high
Cleaning	: Conditionally cleanable with a damp cloth

Vittorio - 4144





Vittorio - 4143



Vittorio - 4141



Vittorio - 4142



Fabric Specification

Posh	Technical Details
Composition	: 100% PES with acrylic coating
Woven	: Yes
Coated	: Yes
Weight	: 410 gsm (±5%)
Fabric Thickness	: 0.67mm (±0.05)
Width	: 2.80 mtr.
Light Fastness	: 4 to 5 Grade
PVC Free	: Yes
Green Guard	: Yes
Hanging Properties	: Excellent
Tearing Strength	: Very high
Cleaning	: Conditionally cleanable with a damp cloth

Posh - 4192





Posh - 4191



Posh - 4193



Posh - 4194



Azure - 4182



Azure - 4181

Fabric Specification

Azure	Technical Details
Composition	: 100% PES with acrylic coating
Woven	: Yes
Coated	: Yes
Weight	: 360 gsm (±5%)
Fabric Thickness	: 0.45mm (±0.05)
Width	: 2.50 mtr.
Light Fastness	: 4 to 5 Grade
PVC Free	: Yes
Green Guard	: Yes
Hanging Properties	: Excellent
Tearing Strength	: Very high
Cleaning	: Conditionally cleanable with a damp cloth





Leaf - 3181

Fabric Specification

Leaf	Technical Details
Composition	: 100% Polyester
Woven	: Yes
Coated	: Yes
Weight	: 390 gsm (±5%)
Fabric Thickness	: 0.63mm (±0.05)
Width	: 2.80 mtr.
Light Fastness	: 5 to 6 Grade
Lead Free	: Yes
Hanging Properties	: Excellent
Tearing Strength	: Very high
Cleaning	: Conditionally cleanable with a damp cloth

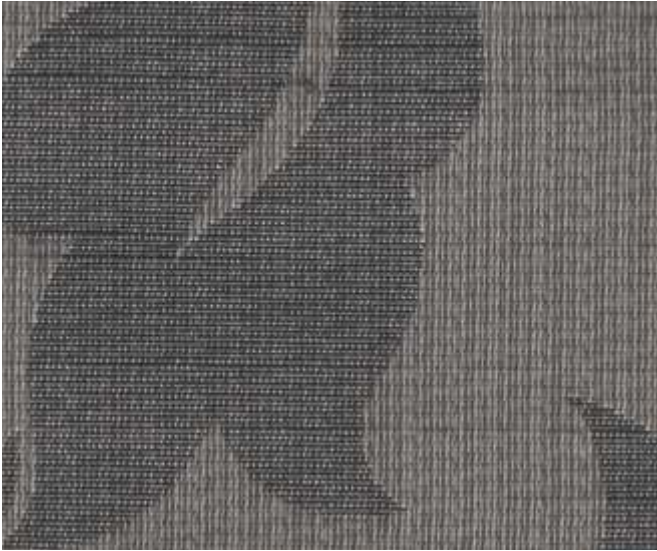




Leaf-3181



Leaf-3183



Leaf-3184



Roller Blinds
Blackout Collection

ROLLER | ROMAN | PANEL
BLINDS

B-03

• **Fixing Option**



Decorative Cassette



Plain Cassette



Headrail



Direct Fix



Decorative Bottom Rail



Plain Bottom Rail

• **Operating Systems**



MANUAL



ONE TOUCH UP



REMOTE



SMART PHONE CONTROL

• **Blinds solution for Windows with Multifunctional Suitability and Different Shapes**



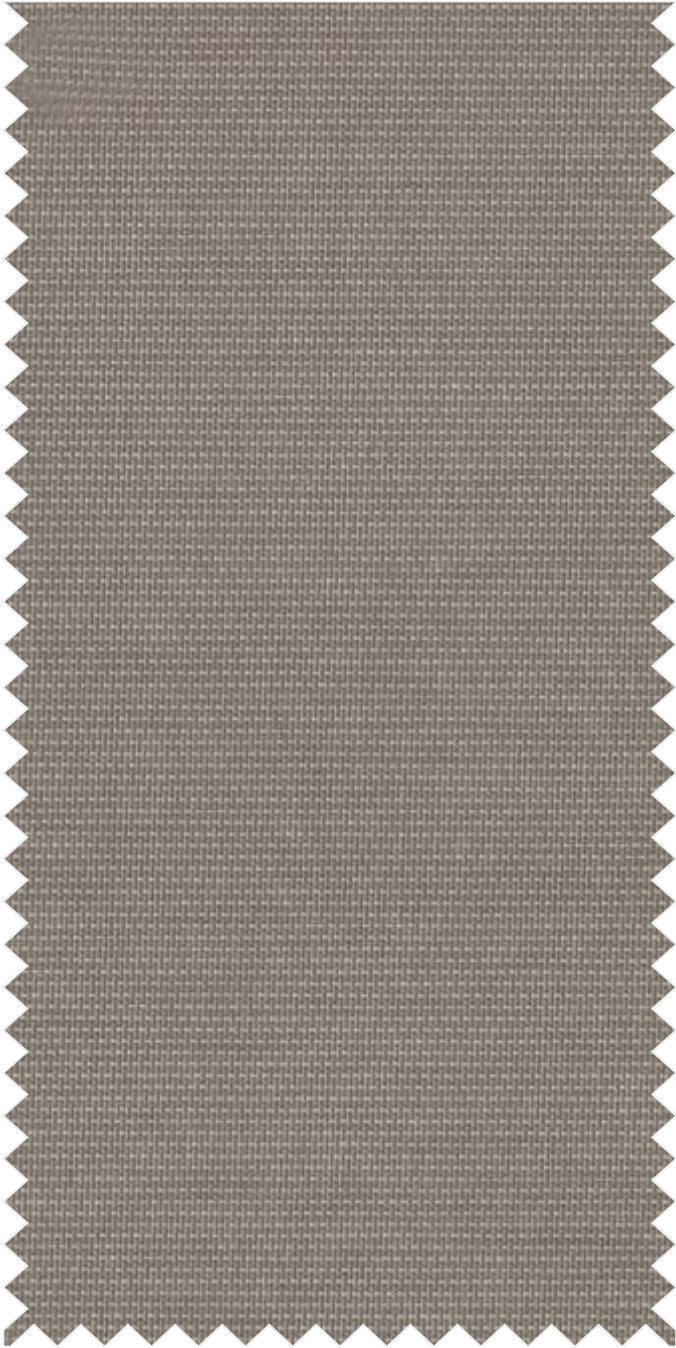
Marvel

Roller Blinds
Blackout Collection



Marvel

Roller Blinds
Blackout Collection



Lines - 3163

Fabric Specification

Lines	Technical Details
Composition	: 100% Polyester
Woven	: Yes
Coated	: Yes
Weight	: 320 gsm (±5%)
Fabric Thickness	: 0.52mm (±0.05)
Width	: 2.80 mtr.
Light Fastness	: 5 to 6 Grade
Lead Free	: Yes
Hanging Properties	: Excellent
Tearing Strength	: Very high
Cleaning	: Conditionally cleanable with a damp cloth



Light Fastness



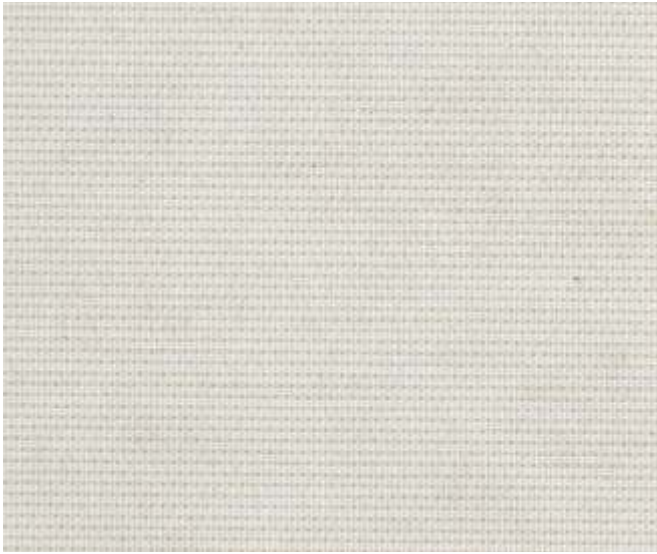
Woven Fabric



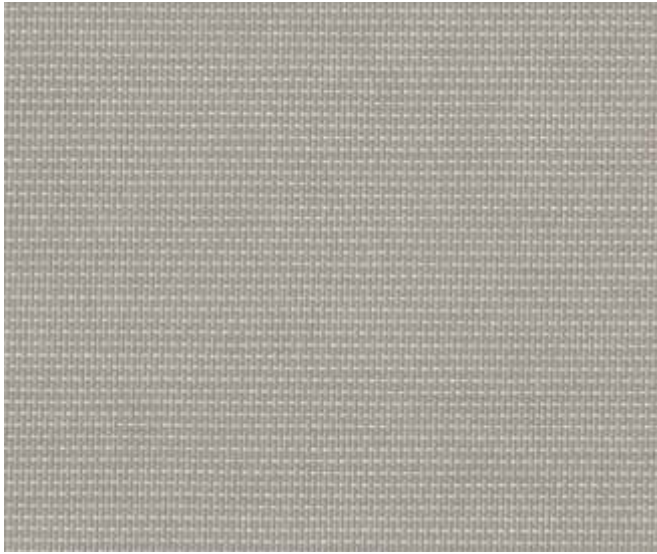
Coated Fabric



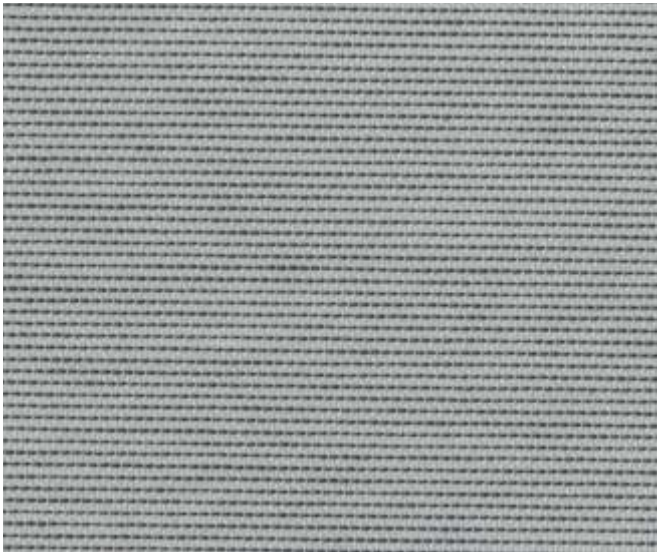
PVC FREE



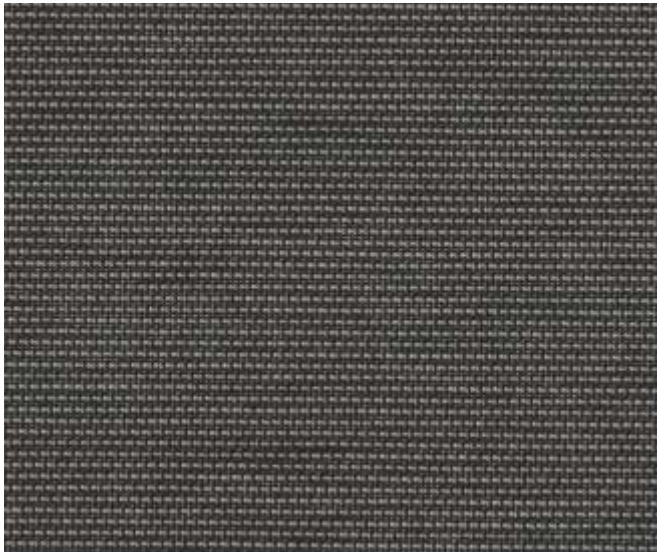
Lines-3161



Lines-3162



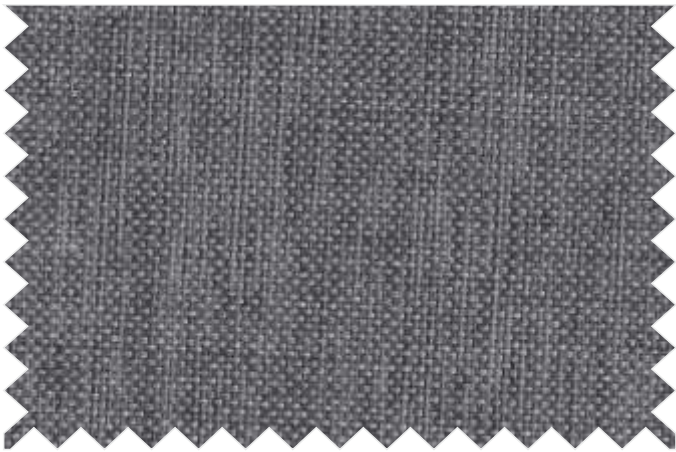
Lines-3164



Lines-3165



Seven - 4035



Seven - 4036



Seven - 4037

Fabric Specification

Seven	Technical Details
Composition	: 100% PES with acrylic coating
Woven	: Yes
Coated	: Yes
Weight	: 330 gsm (±5%)
Fabric Thickness	: 0.42mm (±0.05)
Width	: 3.00 mtr.
Light Fastness	: 4 to 5 Grade
PVC Free	: Yes
Green Guard	: Yes
Oeko-tex-standard 100	: Yes
Hanging Properties	: Excellent
Tearing Strength	: Very high
Cleaning	: Conditionally cleanable with a damp cloth



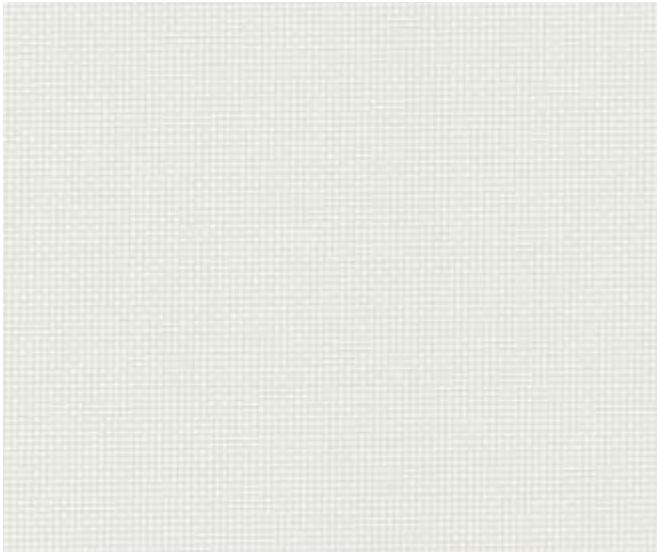


Fabric Specification

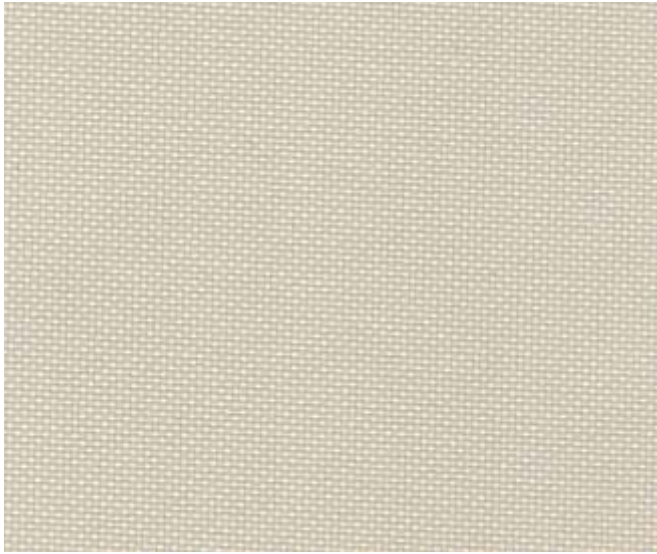
Impulse	Technical Details
Composition	: 100% PES with acrylic coating
Woven	: Yes
Coated	: Yes
Weight	: 495 gsm (±5%)
Fabric Thickness	: 0.57mm (±0.05)
Width	: 2.50 mtr.
Light Fastness	: 4 to 5 Grade
PVC Free	: Yes
Green Guard	: Yes
Oeko-tex-standard 100	: Yes
Hanging Properties	: Excellent
Tearing Strength	: Very high
Cleaning	: Conditionally cleanable with a damp cloth

Impulse - 4271

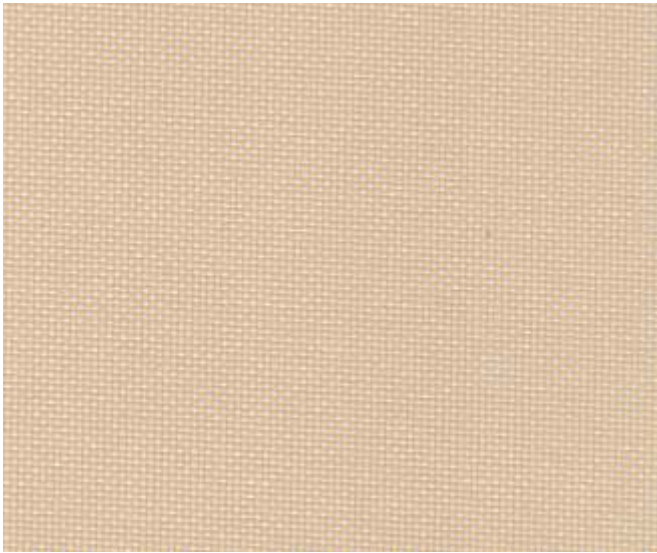




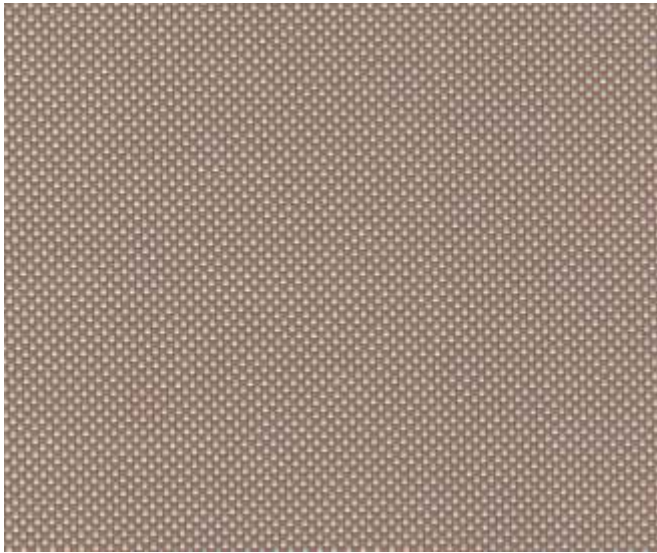
Impulse - 4272



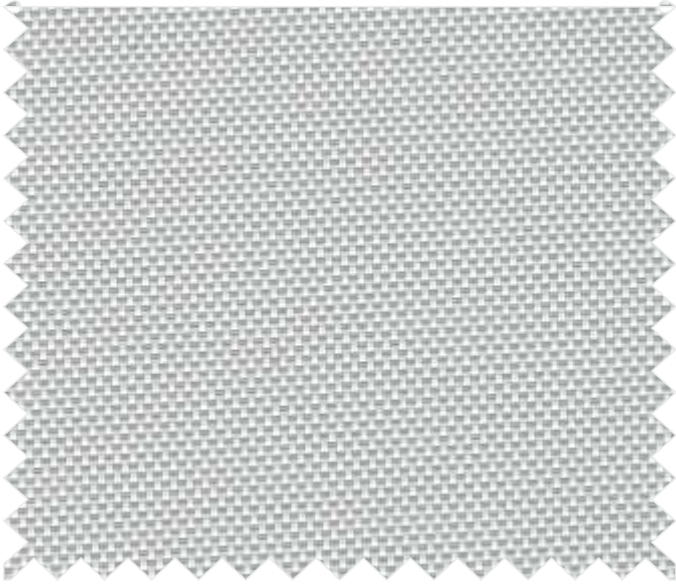
Impulse - 4273



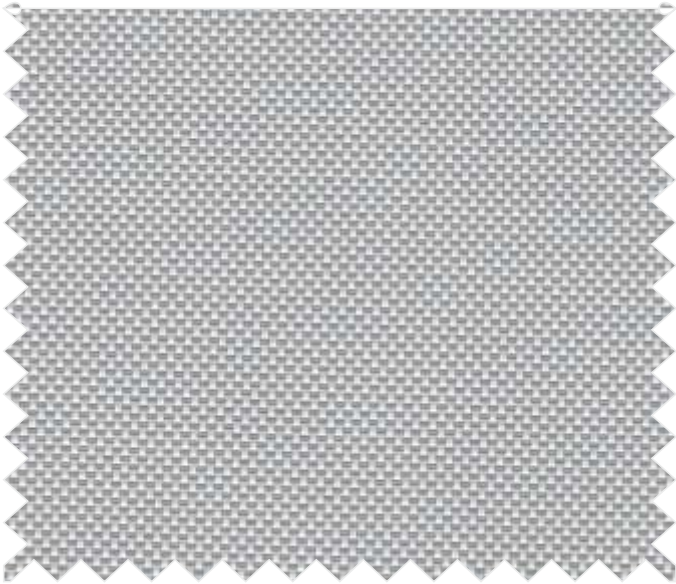
Impulse - 4274



Impulse - 4275



Gauzy - 3673



Gauzy - 3675

Fabric Specification

Gauzy	Technical Details
Composition	: 55% PVC +15% PES + 30% Acrylic Coating
Woven	: Yes
Coated	: Yes
Weight	: 610 gsm (±5%)
Fabric Thickness	: 0.77mm (±0.05)
Width	: 3.00 mtr.
Light Fastness	: 6 to 7 Grade
Lead Free	: Yes
Green Guard	: Yes
Oeko-tex-standard 100	: Yes
Hanging Properties	: Excellent
Tearing Strength	: Very high
Cleaning	: Conditionally cleanable with a damp cloth





Array - 4161



Array - 4162

Fabric Specification

Array	Technical Details
Composition	: 100% Polyester
Woven	: Yes
Coated	: Yes
Weight	: 340 gsm (±5%)
Fabric Thickness	: 0.55mm (±0.05)
Width	: 2.80 mtr.
Light Fastness	: 4 to 5 Grade
PVC Free	: Yes
Green Guard	: Yes
Hanging Properties	: Excellent
Tearing Strength	: Very high
Cleaning	: Conditionally cleanable with a damp cloth





Harp - 4022

Fabric Specification

Harp	Technical Details
Composition	: 100% PES with acrylic coating
Woven	: Yes
Coated	: Yes
Weight	: 395 gsm (±5%)
Fabric Thickness	: 0.70mm (±0.05)
Width	: 2.80 mtr.
Light Fastness	: More than 4 Grade
PVC Free	: Yes
Green Guard	: Yes
Oeko-tex-standard 100	: Yes
Hanging Properties	: Excellent
Tearing Strength	: Very high
Cleaning	: Conditionally cleanable with a damp cloth





Harp - 4024



Harp - 4026



Harp - 4028



Fabric Specification

Bliss	Technical Details
Composition	: 100% PES with acrylic coating
Woven	: Yes
Coated	: Yes
Weight	: 307 gsm ($\pm 5\%$)
Fabric Thickness	: 0.40mm (± 0.05)
Width	: 2.30 mtr.
Light Fastness	: 4 to 5
PVC Free	: Yes
Green Guard	: Yes
Oeko-tex-standard 100	: Yes
Hanging Properties	: Excellent
Tearing Strength	: Very high
Cleaning	: Conditionally cleanable with a damp cloth

Bliss - 4251





Bliss - 4252



Bliss - 4253



Bliss - 4254

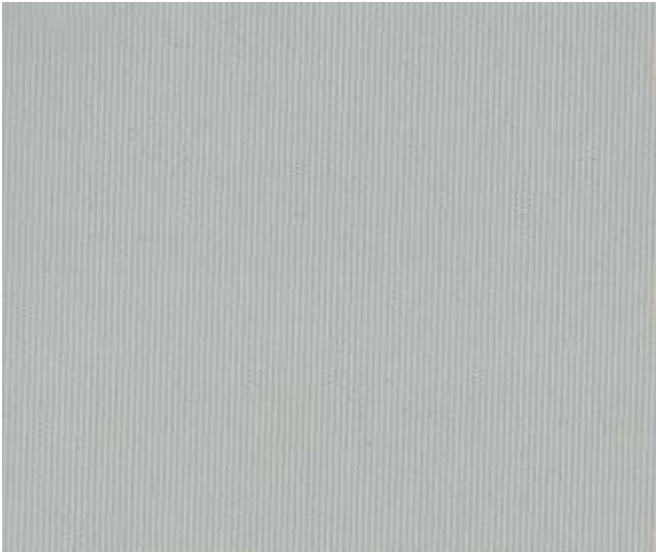


Fabric Specification

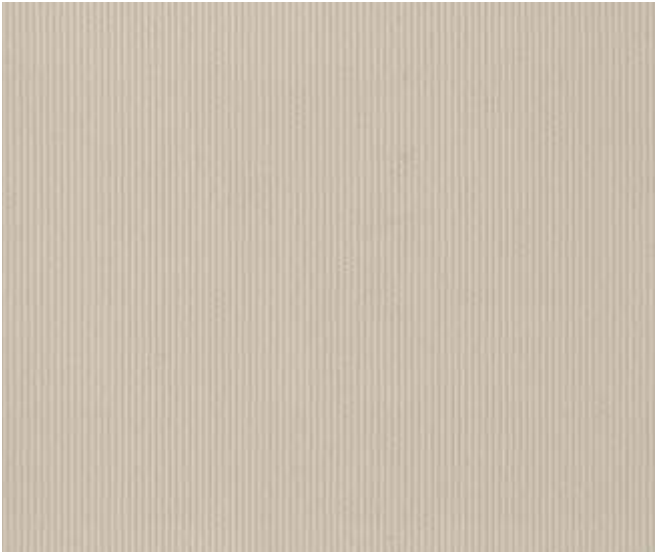
Lush	Technical Details
Composition	: 100% PES
Woven	: Yes
Coated	: Yes
Weight	: 300 gsm (±5%)
Fabric Thickness	: 0.31mm (±0.05)
Width	: 2.30 mtr.
Light Fastness	: 4 to 5
PVC Free	: Yes
Green Guard	: Yes
Hanging Properties	: Excellent
Tearing Strength	: Very high
Cleaning	: Conditionally cleanable with a damp cloth

Lush - 310

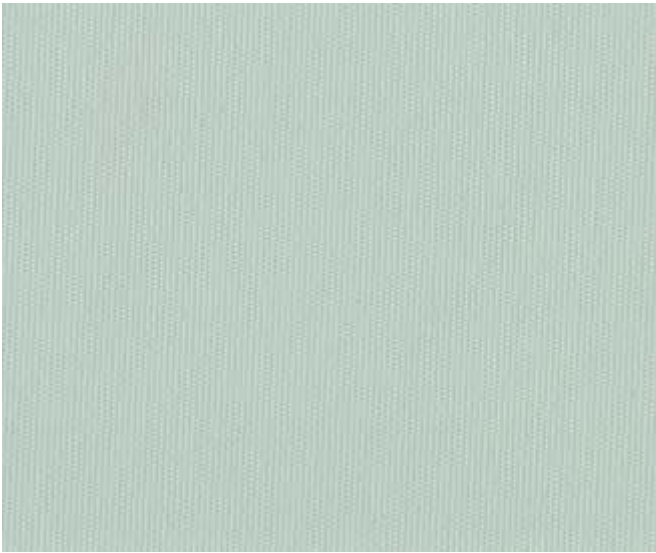




Lush - 310 FR



Lush - 304



Lush - 311



Fluff-4241

Fabric Specification

Fluff	Technical Details
Composition	: 100% PES with acrylic coating
Woven	: Yes
Coated	: Yes
Weight	: 340 gsm (±5%)
Fabric Thickness	: 0.41mm (±0.05)
Width	: 2.50 mtr.
Light Fastness	: 4 Grade
PVC Free	: Yes
Green Guard	: Yes
Oeko-tex-standard 100	: Yes
Hanging Properties	: Excellent
Tearing Strength	: Very high
Cleaning	: Conditionally cleanable with a damp cloth



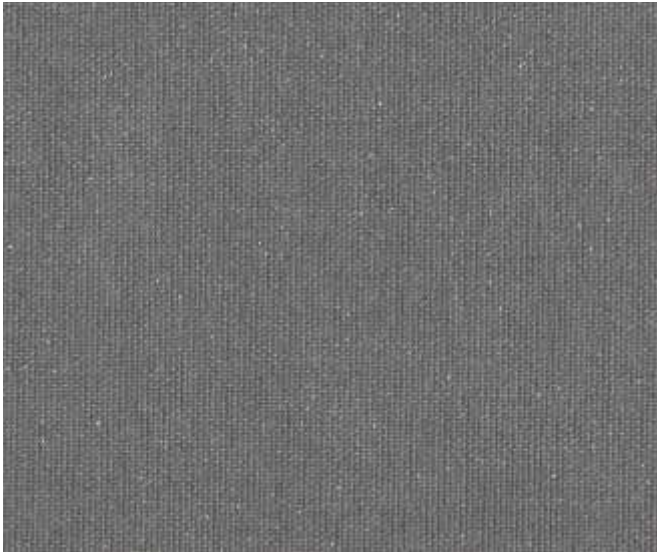


Saga - 4081

Fabric Specification

Saga	Technical Details
Composition	: 100% PES
Woven	: Yes
Coated	: Yes
Weight	: 356 gsm (±5%)
Fabric Thickness	: 0.47mm (±0.05)
Width	: 3.00 mtr.
Light Fastness	: 5 to 6 Grade
Lead Free	: Yes
Hanging Properties	: Excellent
Tearing Strength	: Very high
Cleaning	: Conditionally cleanable with a damp cloth





Saga - 4084



Saga - 4083



Saga - 4082

ROLLER | ROMAN | PANEL BLINDS

Blackout Collection | Translucent Collection | Visible Collection



Marvel