



F&F | FLOOR & FURNISHINGS

SEDONA

— FABRICS —

MARKETING BRIEF



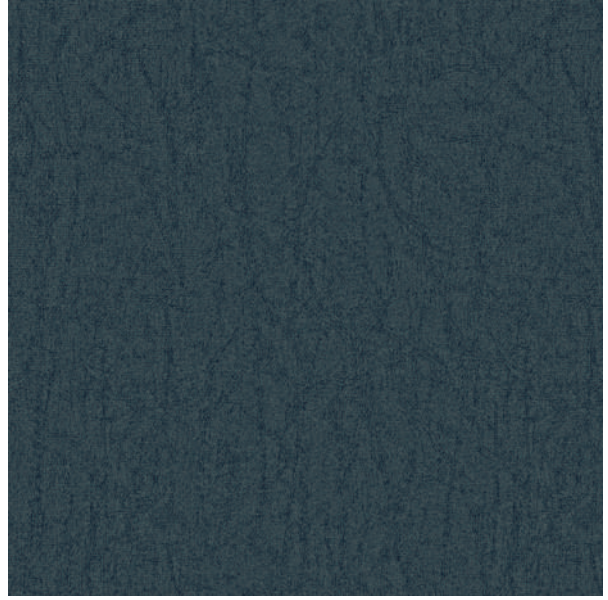
SEDONA

(22 Colourways)

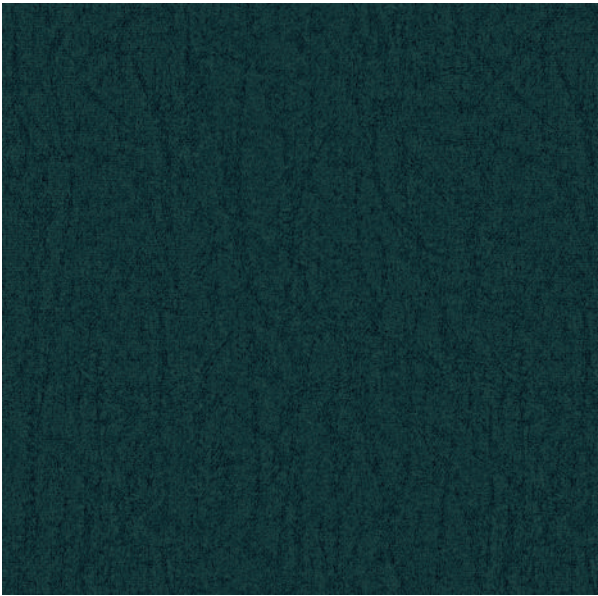
“A dense and luxurious velvet, flourishes in a beautiful range of muted and vibrant shades wonderfully refined with at most soft hand feel. This velvet evokes the delicacy of shines which gives the interior a luxurious look.”



SEDONA-INDIGO



SEDONA-COBALT



SEDONA-CERULEAN



SEDONA-FOREST



SEDONA-MINERAL



SEDONA-MINT



SEDONA-RIVER



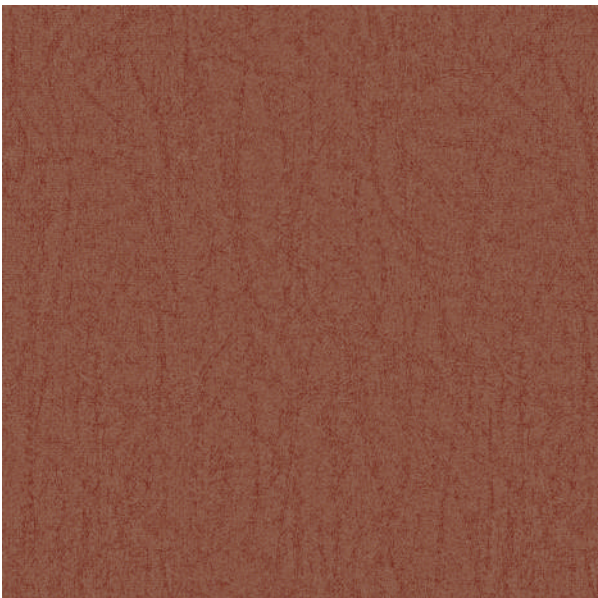
SEDONA-PACIFIC



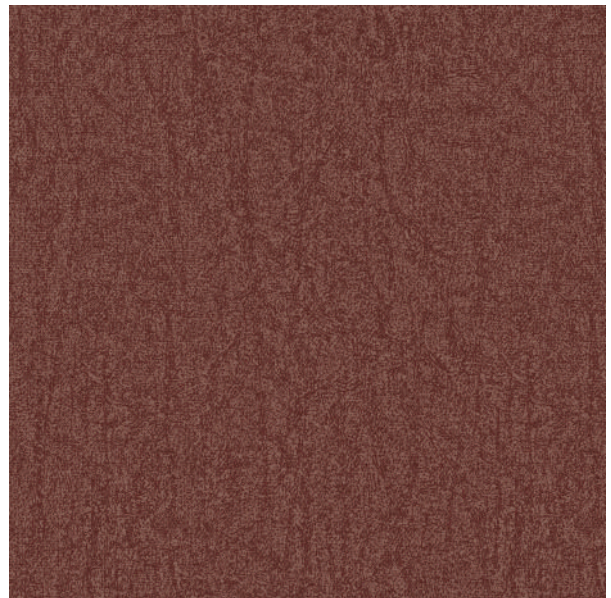
SEDONA-CHARCOAL



SEDONA-BROWNIE



SEDONA-CORAL



SEDONA-RHUBARB



SEDONA-ROCK



SEDONA-SAND



SEDONA-TAUPE



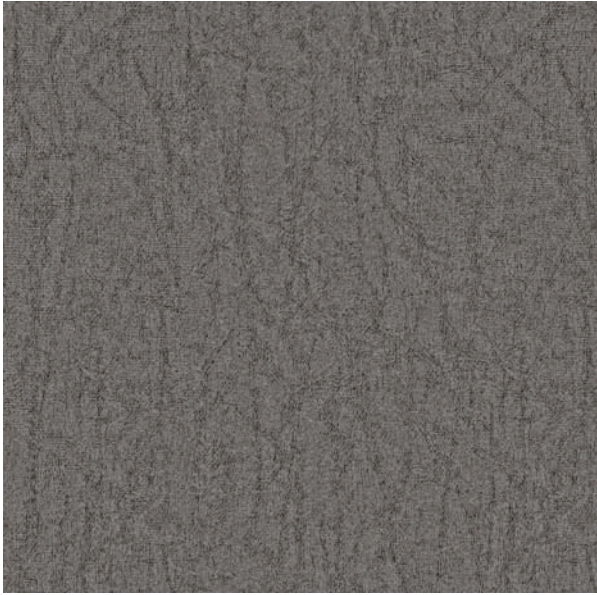
SEDONA-WILLOW



SEDONA-CASHEW



SEDONA-FOG



SEDONA-SMOKE



SEDONA-SILVER








SEDONA-FLINT



SEDONA-GUNMETAL

Technical Details

Product Name : Sedona	Rec. Usage : 
Width in CM : 145	Care Instructions :    
Repeat size in CM : Hor (1) x Ver (1)	Martindale : 30,000
Composition : 100% PES	Piling : 3-4
Weight GSM : 400	Colour Fastness : 3-4



For any further details, Please feel free to Contact

09643403802, 0124-4632300

**Corp. Off: Plot No: 42, Sector 32,
Institutional Area, Gurugram-122003, Haryana (India)**

Email: crm@fandf.in | Website: www.fandf.online