



METROPOLITAN STORIES II

by



VOL. 2

About

EXCEL[®]
Wallcoverings



Excel Wall Interiors is imbued with a passion for art, luxury and affordable interiors, redefining Indian walls with Global trends. Over the past two decades we are the fastest growing and the largest wallpaper company in India. Headquartered in City of Joy - Kolkata, Excel has its presence all over India through our expert sales team and channel partners.

Discover our wallcovering collection which includes - from traditional patterns like classical damask, stripes, and motifs to modern prints like abstract, contemporary, botanical to digitally printed custom murals.

FOLLOW US



www.excelwallpapers.com

Address : 301 Prasad Square, 164 AJC Bose Road, WB,
Kolkata - 700 014, India. Contact us : +91-33-40560400,
email: info@excelwallpapers.com

METROPOLITAN STORIES II

The journey continues!

Get ready for new people, new cities and stunning new modern interiors. Six brand identities showcase their unique style and their easy, relaxed lifestyle and home style. They will encourage you to try new ideas and copy existing ones and to develop your own style. Wherever they are in the world - the new designs, full of expression, tell their own stories and encourage you to re-tell them in a way that is both inspiring and fascinating.

Created and made in Germany.

ALËNA
ST. PETERSBURG



Said
Marrakech



Nala
CAPE TOWN



METROPOLITAN STORIES II

Designed & Manufactured by A.S. Création Tapeten AG | Germany

Specification Sheet

Collection Name : METROPOLITAN STORIES 2

Country of Origin : Germany

Category : Luxury

Physical Properties

Size : 0.53 mtr x 10.05 mtr

Supply Quantity : 57 sqft

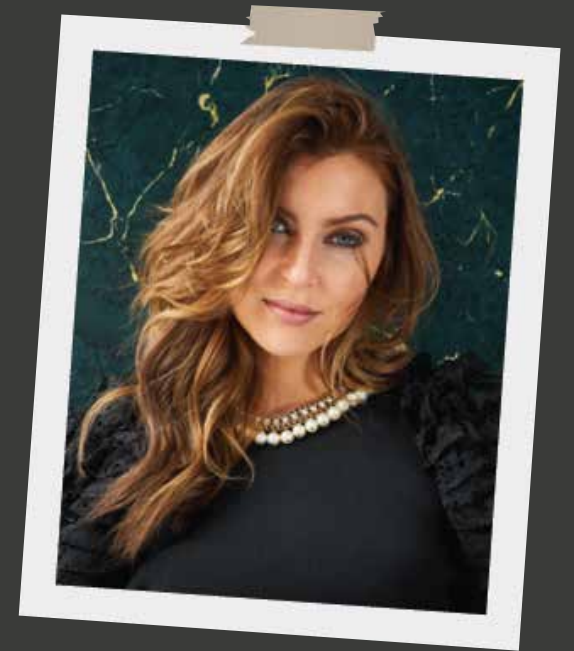
Backing : Vinyl with non woven

"Alëna. St. Petersburg."

The typical character "ALENA - St. Petersburg" represents the trends from the metropolis of St. Petersburg.

Strutting on high heels through the white nights of St. Petersburg. Along the magnificent buildings into the hip and urban centre of this Baltic city with more than 1 million inhabitants.

"ALENA - St. Petersburg" is the feminine side of a city characterised by tsars. Elegant and modern, "ALENA - St. Petersburg" is an exciting addition rather than a contradiction to the luxurious baroque features of this city. The new way of living sees walls that hint at the marble of the city's prestigious buildings.



The typical character "ALENA - St. Petersburg" represents the trends from the metropolis of St. Petersburg. The new way of living sees walls that hint at the marble of the city's prestigious buildings. Warm shades of amber, the "gold of the Baltic", feature in this new collection. Glamorous flourishes, statement ornamentation and a clean style are the hallmarks of a special wallpaper decoration.



37855-1



37855-2



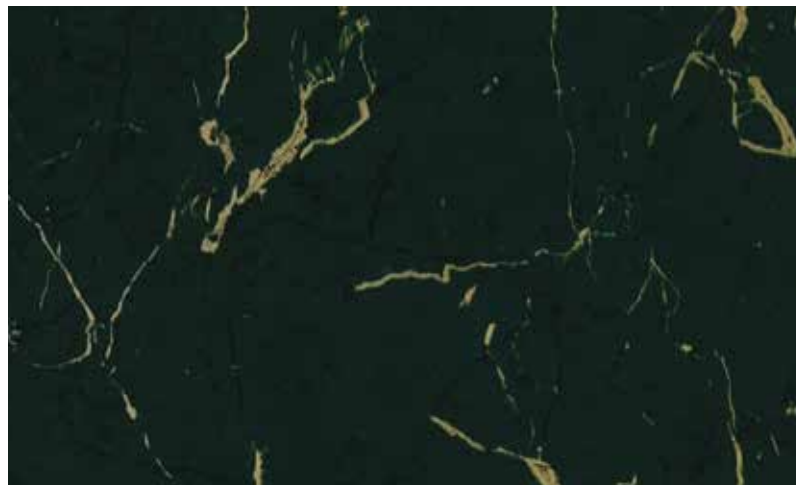
37855-3



37855-5



37855-4



37855-5



37855-6

Wallpapers adorned with ornamentation lend a touch of class and elegance to any room. Shades of black and gold in particular attract everyone's attention to these luxury wallpapers. The 3-D prints and detailed structure allow walls to express themselves and homes to shine with a new look. With the right accessories and high-quality furniture, your home will become your castle.



37901-1



37901-2



37901-3





37901-2



37901-4



37901-5

"ALENA - St. Petersburg" loves glitz and glamour. When it comes to celebrating, it's time to put on beautiful, elegant clothes, chosen with care from your favourite boutique. But chic style is not just confined to your wardrobe – not at all – your home also induces a sense of well-being. Your hall is decorated with geometrically patterned wallpaper, playing with light and shadow. The golden watercolour highlights are ideal for taking centre stage on large expanses of wall.



37863-1



37863-2



37863-4

37863-3



"SAID. Marrakech."

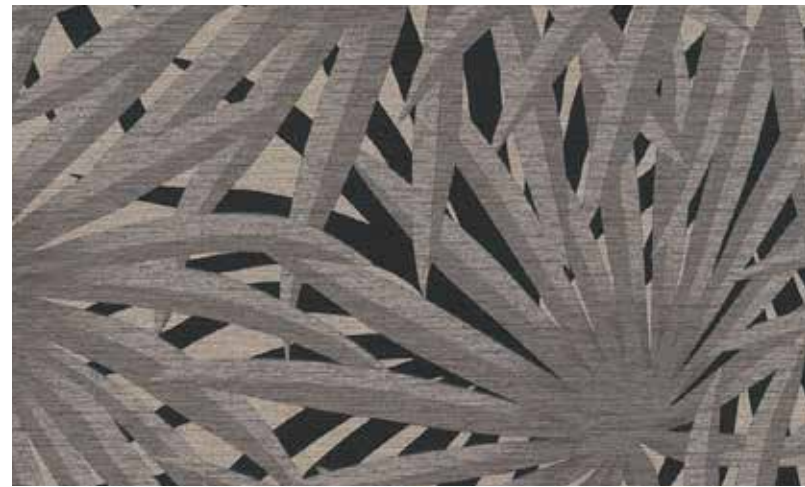
The typical character "SAID - Marrakech" represents the trends from the metropolis of Marrakech.

Forever weaving through the dense crowds of labyrinthine alleyways filled with fragrances from all over the world, this is where the new world meets the old. Marrakesh: This city, brought to life in *The Arabian Nights*, is home to SAID.

This is where travel bloggers fulfil their aspirations and live casually and carefree in a relaxed state of ease. The new SAID collection promises to reveal oriental secrets, embellished with golden structures on finishes in warm, dark tones and in perfect harmony with natural materials.



The typical character "SAID - Marrakech" represents the trends from the metropolis of Marrakech. Palm patterns in light green and beige are at their most beautiful on the wall. And why not think differently again and roll out the carpet against the walls of your new home.



37861-2



37861-3



37861-4





The "SAID - Marrakech" wallpaper brings sunshine, warmth and eastern flair to your home. It is reminiscent of a Persian carpet with a base of bold red tones perfectly accentuated with soft shades of green beige. It exudes cosiness and comfort!



37868-1



37868-2

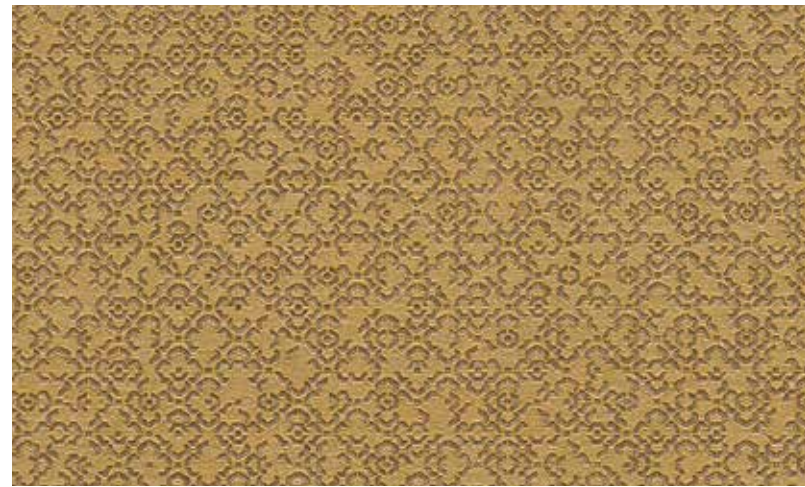


37868-3

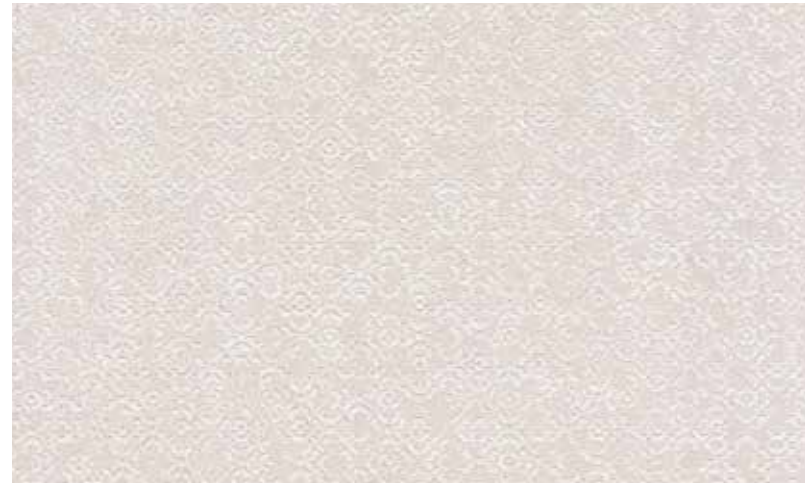




At first glance, the wallpaper looks like a golden puzzle. But when you take another look, you can see tiny geometric flowers dotted across the surface, giving the appearance of a 3-D pattern. If you are looking for an elegant, high-quality golden wallpaper, look no further than "SAID - Marrakech". The colour palette ranges from russet to petrol.



37866-1



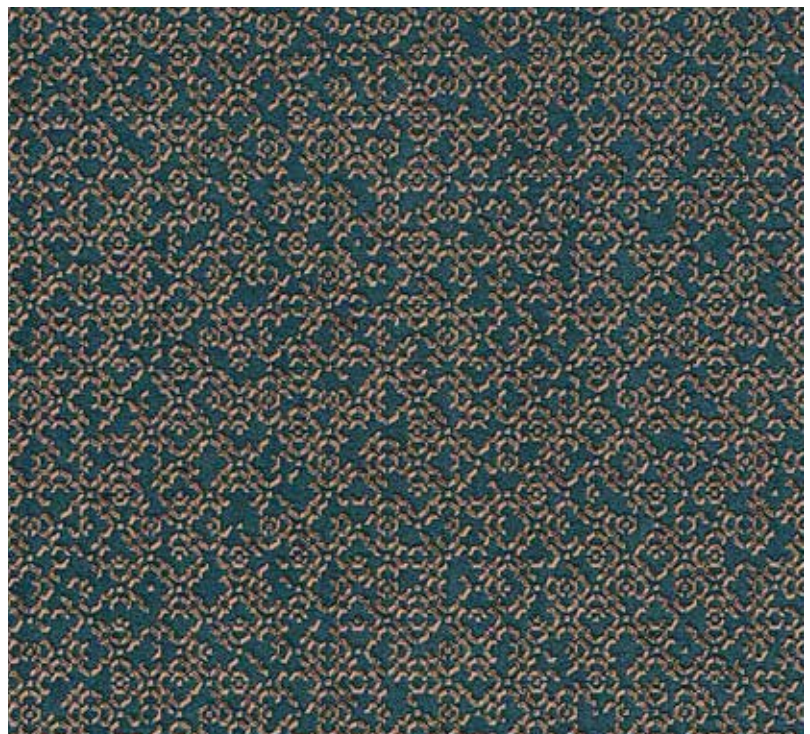
37866-2



37866-3



37866-1



37866-4



37866-5

"NALA. Capetown."

The typical character "NALA - Capetown" represents the trends from the metropolis of Capetown.

Here it is: Beauty that you can never grow tired of or forget. Beauty that makes a strong impression. Cape Town is the capital city and exemplifies tolerance.

Like no other city, it stands for diversity, openness and great compassion. "NALA - Capetown" strives for all of this too and portrays the history of this city on walls with the power of nature and strong colours.

Circular structures with effects in gold and silver are reminiscent of the jewellery and craftsmanship of this South African city. Floral patterns in various designs transform walls into a panorama of the Garden Route.



The circular pattern of "NALA - Capetown" lends a 3-D effect, effortlessly creating stunning walls. The design brings self-confidence and expression to interiors and is reminiscent of a villa by the sea. Imagine holding a cocktail at sunset, relaxing with your loved one, feeling the breeze through your hair – now you can recreate this feeling in your very own home. With "NALA - Capetown's" wallpaper, you don't need to go anywhere.



37900-1



37900-2



37900-4

37900-3



Warning: it's now hip to be happy! The "NALA - Capetown" wallpaper is buzzing with positive energy and the feelgood factor. Yellow is bang on trend this year and forms the basis of the "NALA - Capetown," wallpaper. The jungle-style pattern in brown and turquoise is the best backdrop for unique interiors or simply to bring striking highlights and accents to any space.



37860-1



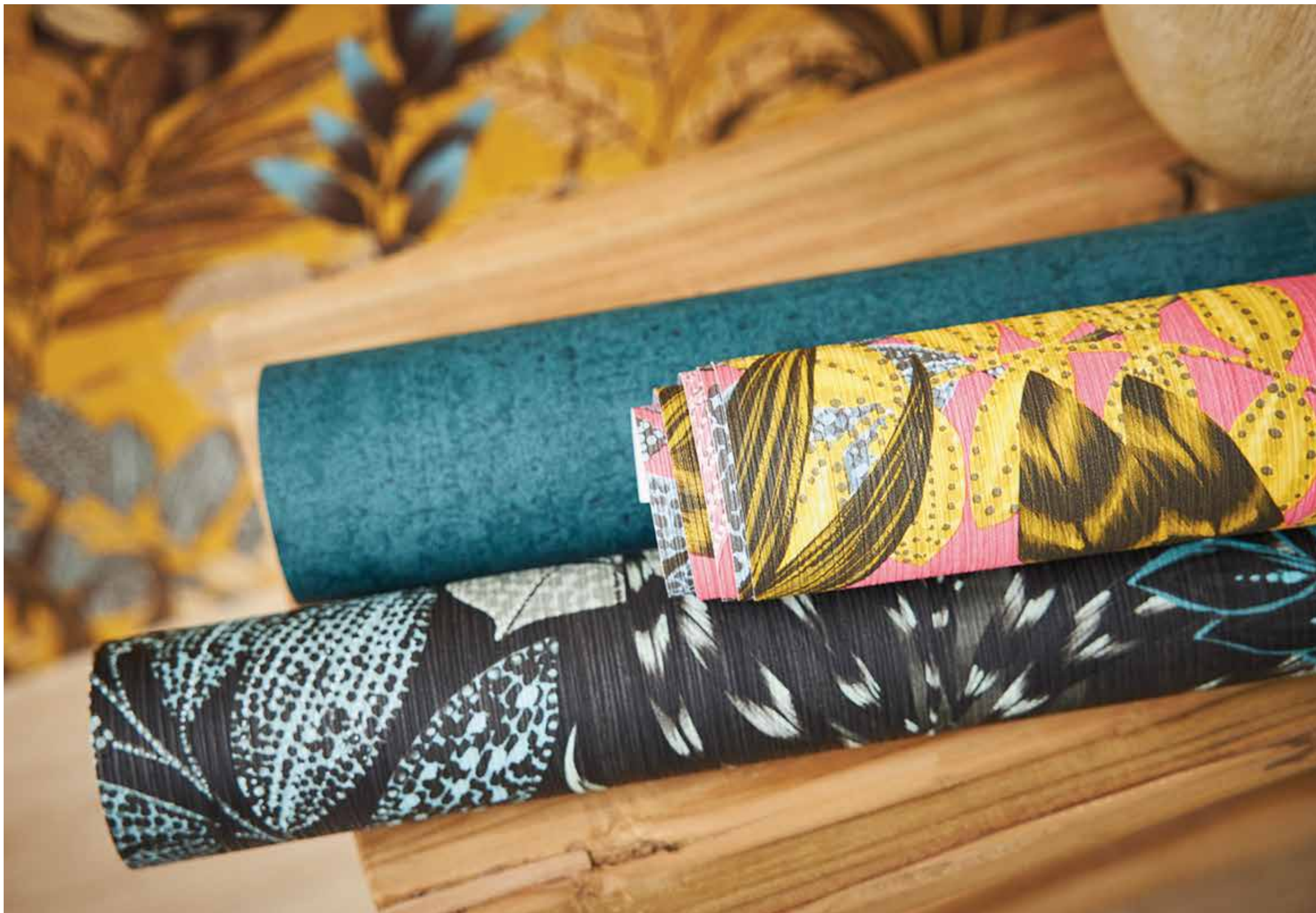
37860-3



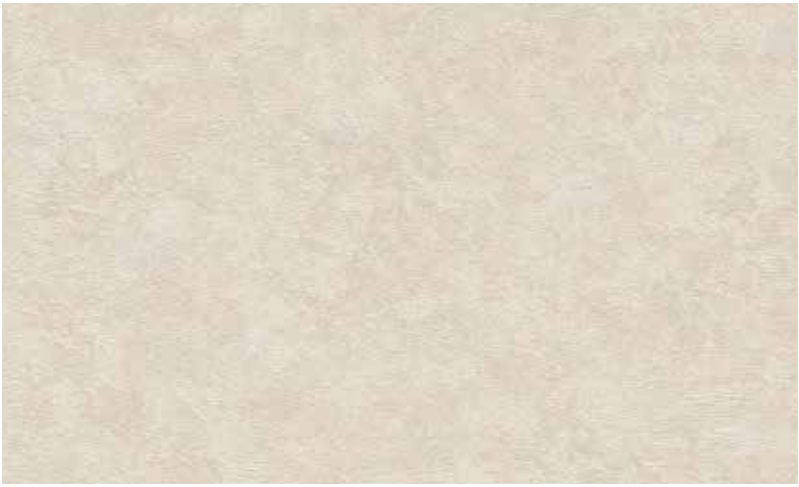
37860-4

37860-2

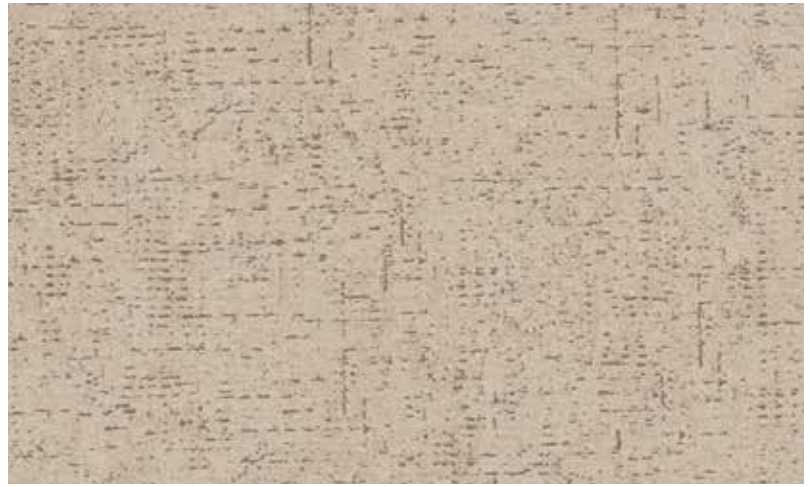








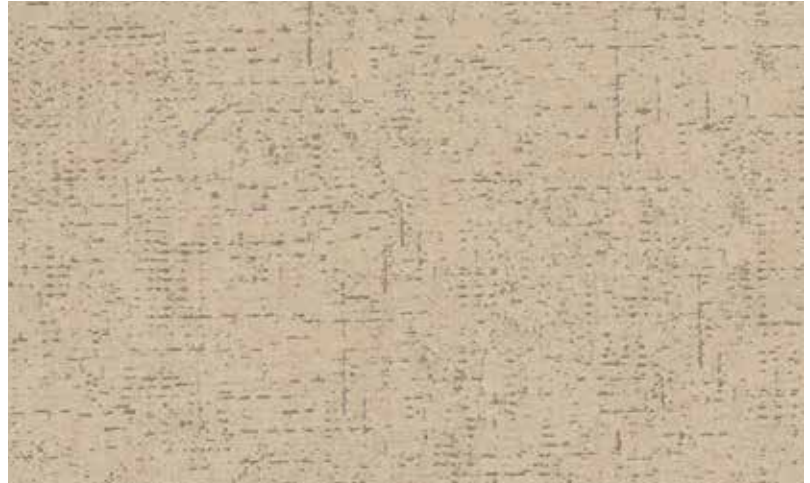
37902-1



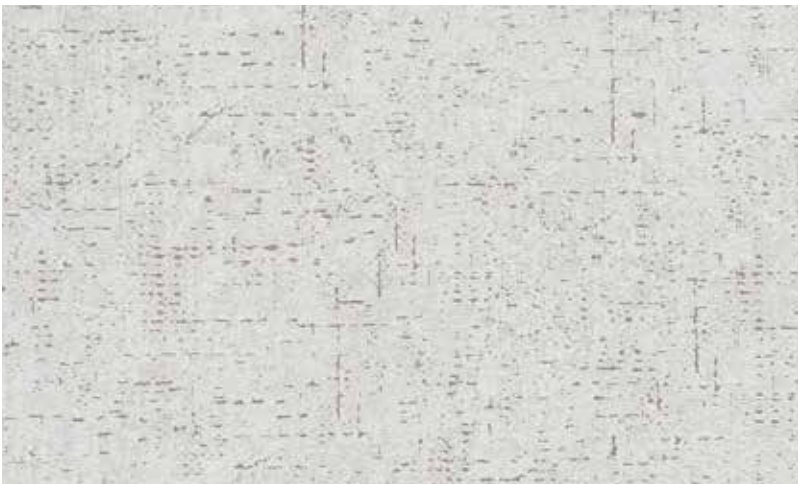
37904-2



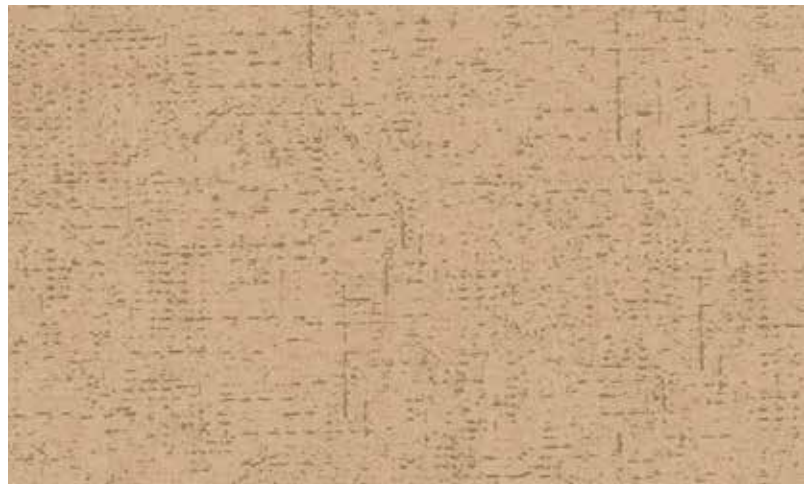
37902-5



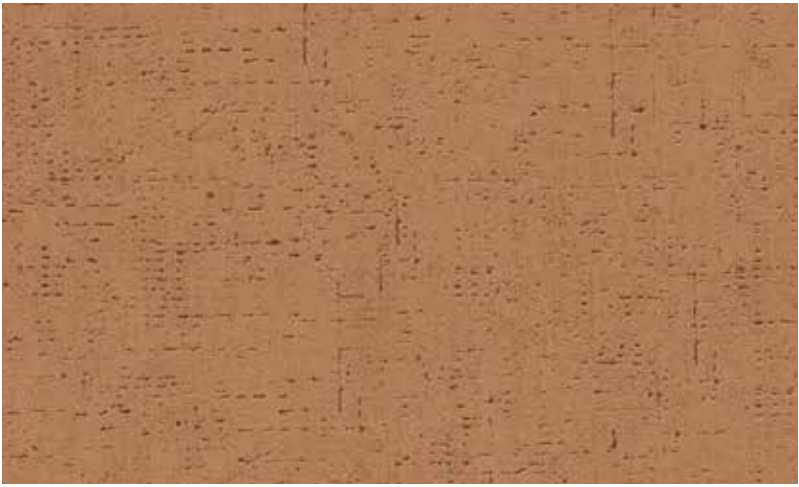
37904-3



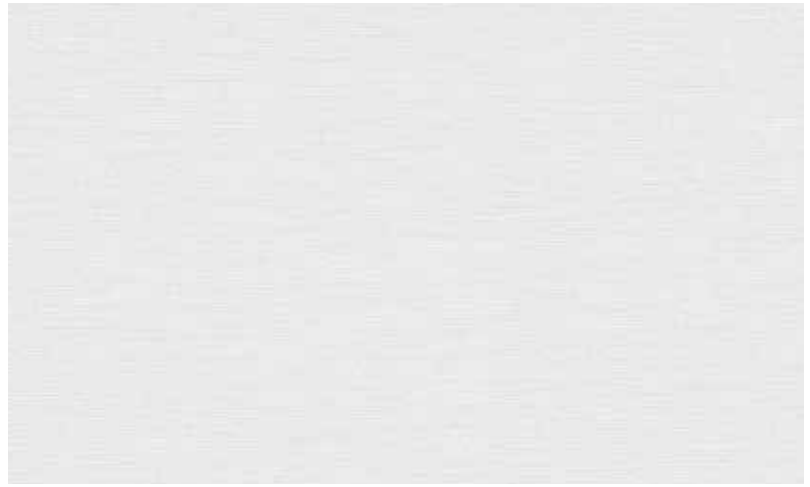
37904-1



37904-4



37904-5



37953-5



37904-6



37953-7



37904-7



37904-8









DD118827



AS CREATION

A.S. Création Tapeten AG | Südstrasse 47
51645 Gummersbach | www.as-creation.de



www.excelwallpapers.com