



SMOOTH TOUCH
CARPET TILES

SPECIFICATION

SMOOTH TOUCH SERIES

Construction: Loop Pile

Tufting Gauge: 1/10"

Pile Weight: 380g/sqm

Pile Height: 3.5 +/-0.5mm

Tile Size: 50x50cm

Pile Fiber Composition: 100%PP

Dye Method: Solution Dyed

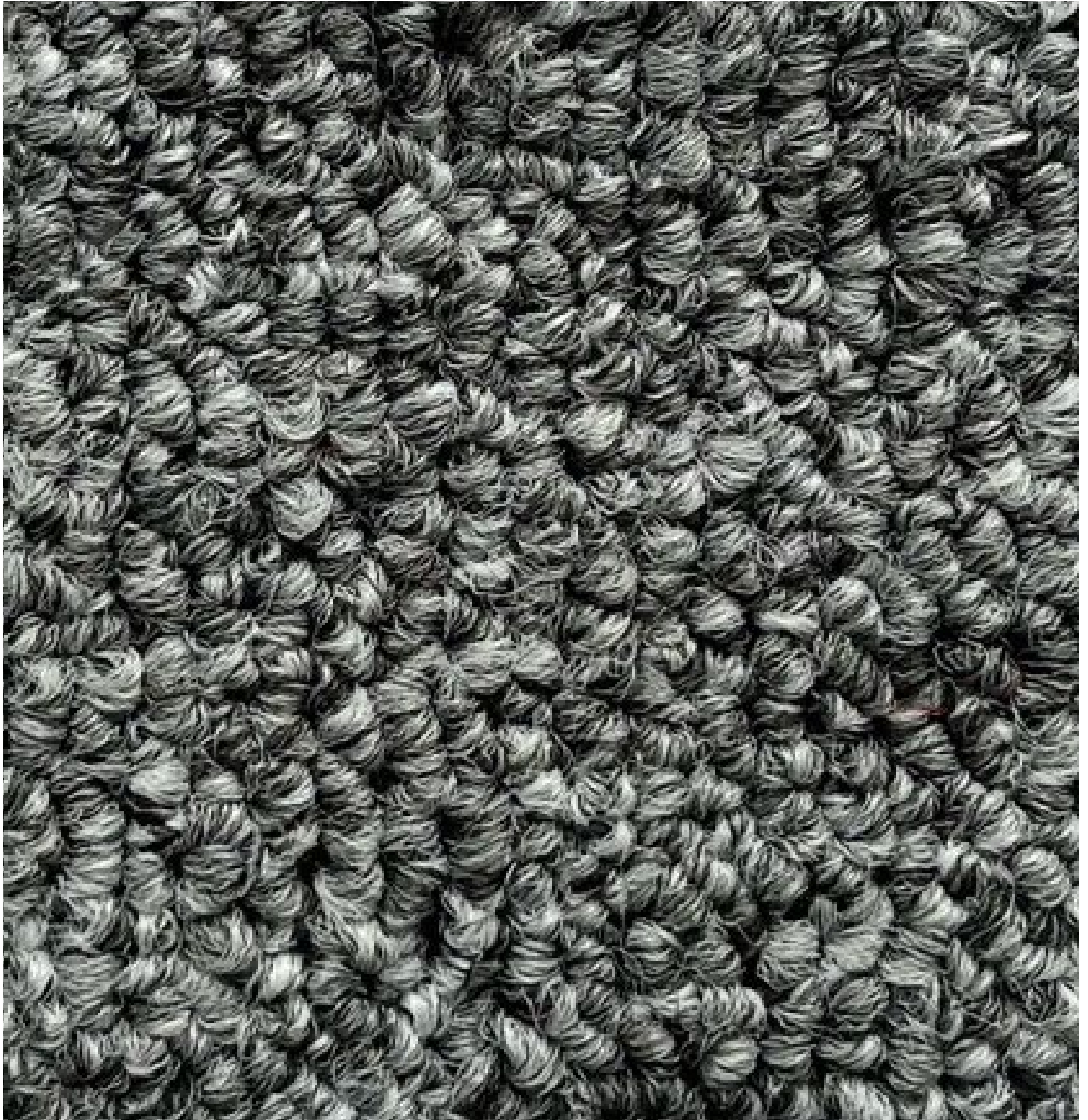
Total Weight: 2600g/sqm +/-3%

Total Thickness: Approx 6.0mm

Backing Structure: Bitumen

Tile Size - 500mm X 500mm X 6.0mm

Box Size - 20pcs/carton, 5sqms

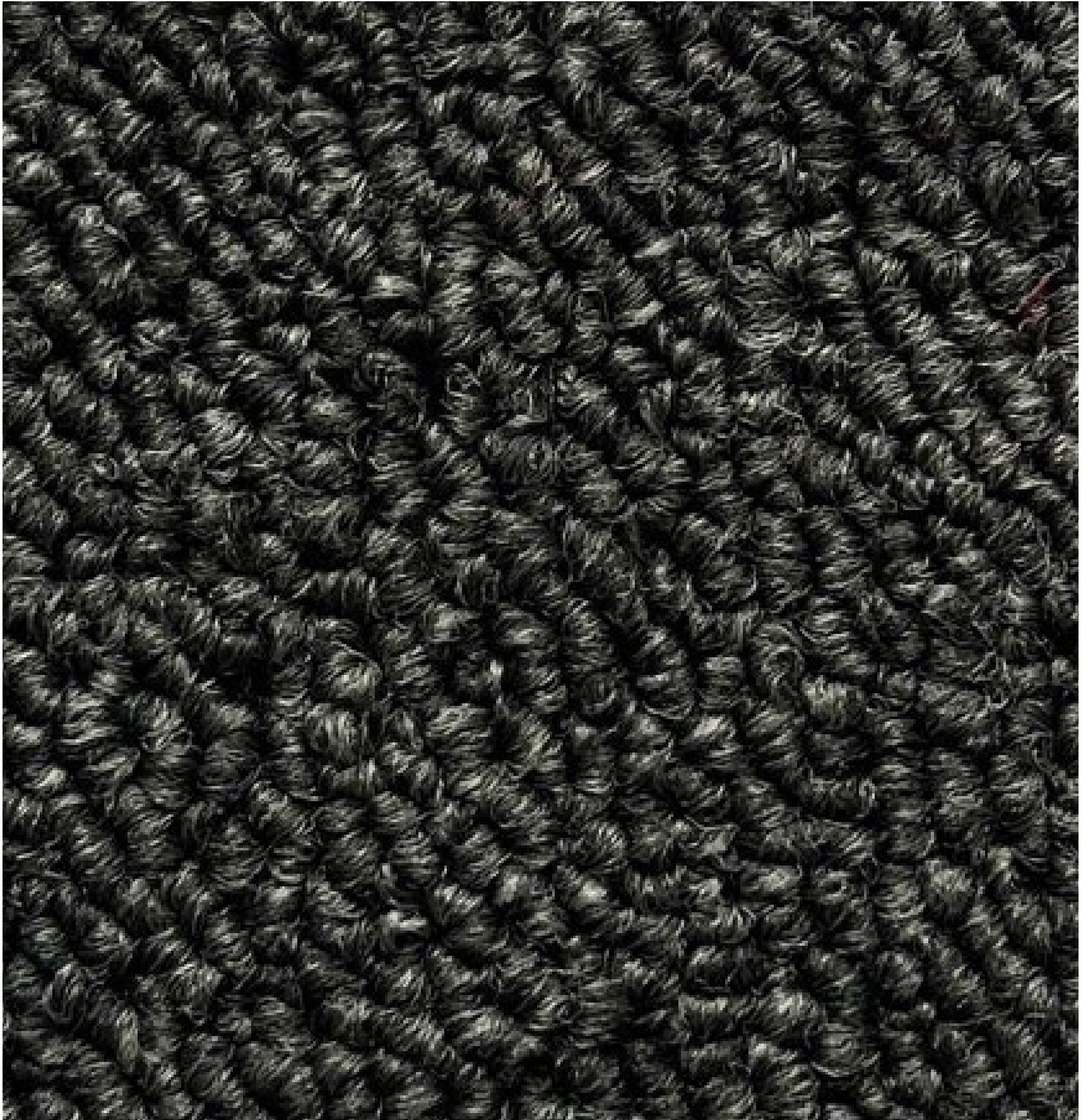


CASCADE BLACK

ST - 01

Tile Size - 500mm X 500mm X 6.0mm

Box Size - 20pcs/carton, 5sqms

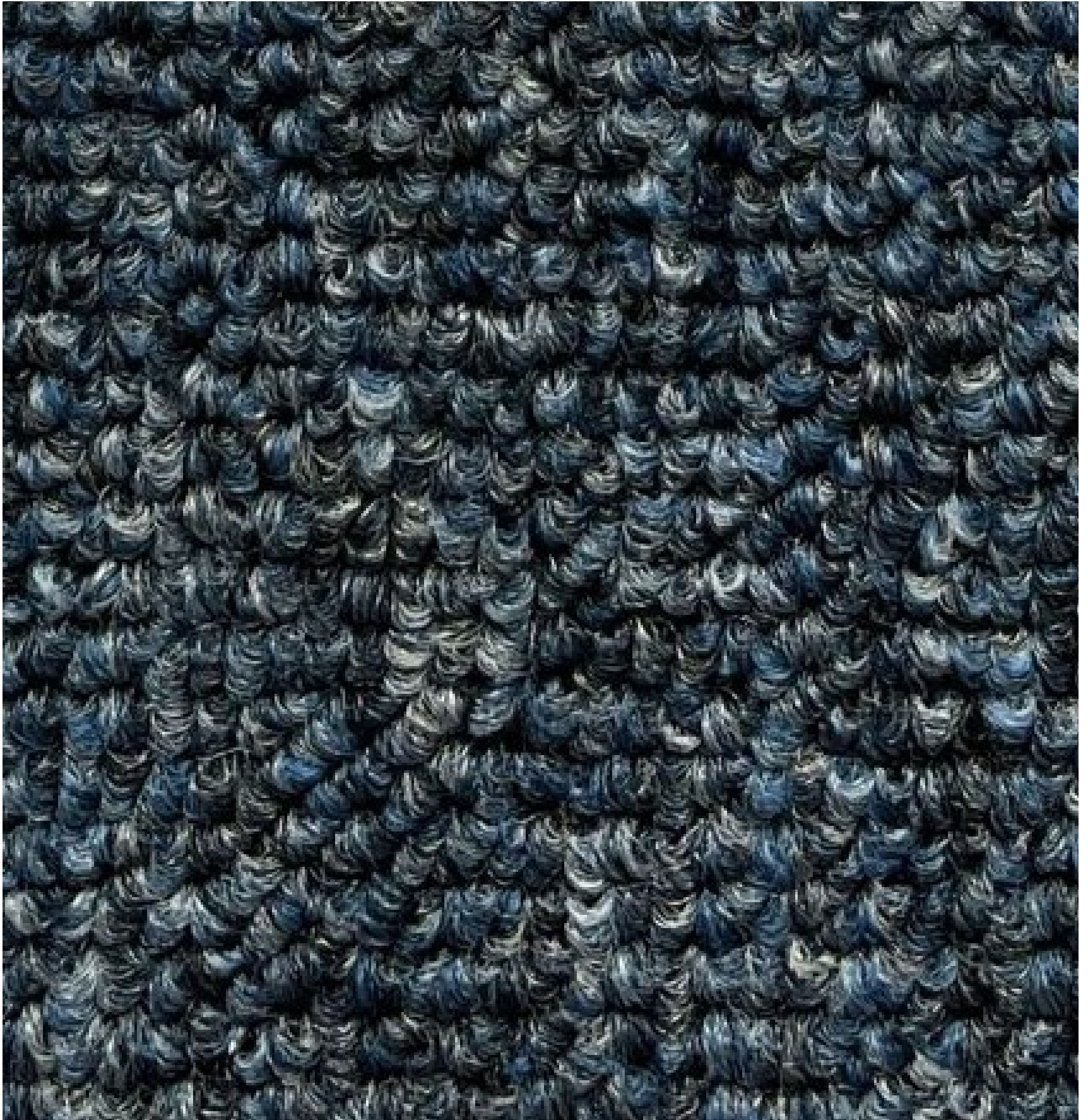


NEXUS GRAY

ST - 02

Tile Size - 500mm X 500mm X 6.0mm

Box Size - 20pcs/carton, 5sqms



TRESTLE BLUE

ST - 03

Tile Size - 500mm X 500mm X 6.0mm

Box Size - 20pcs/carton, 5sqms



VENEER BLUE

ST - 04

Tile Size - 500mm X 500mm X 6.0mm

Box Size - 20pcs/carton, 5sqms



GENIAL BRONZE

ST - 05

Tile Size - 500mm X 500mm X 6.0mm

Box Size - 20pcs/carton, 5sqms



BLOOD MARY

ST - 06

Tile Size - 500mm X 500mm X 6.0mm

Box Size - 20pcs/carton, 5sqms



WILLOW KIRKDALE

ST - 07

Tile Size - 500mm X 500mm X 6.0mm

Box Size - 20pcs/carton, 5sqms



HELIX BLUE

ST - 08



www.excelwallpapers.com