



F&F | FLOOR & FURNISHINGS
LINARA PLAINS
— FABRICS —

MARKETING BRIEF

LINARA PLAINS

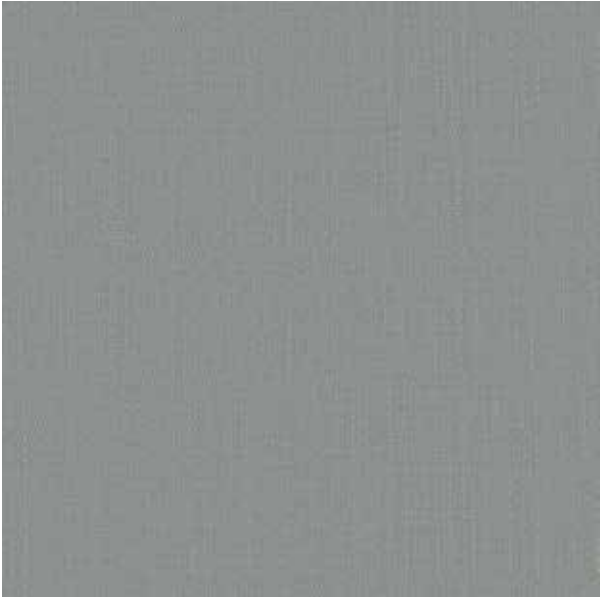
Uneven small scale, woven textured fabrics made out of tactile mixture of yarns creating a versatile classic look, which is ideal for curtains. We offer different colorways under three chic looking textures in this assortment. The beautiful color palette of the collection is created by taking inspiration from earthy and neutral shades which is perfect for your interior.



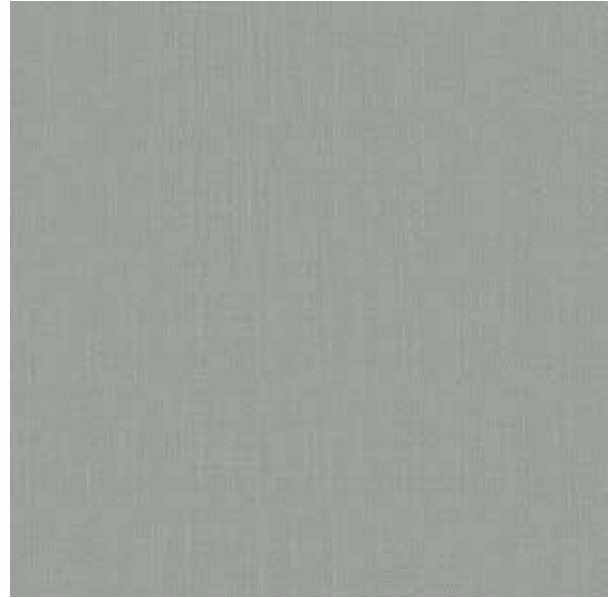
AVENA

(11 Colourways)

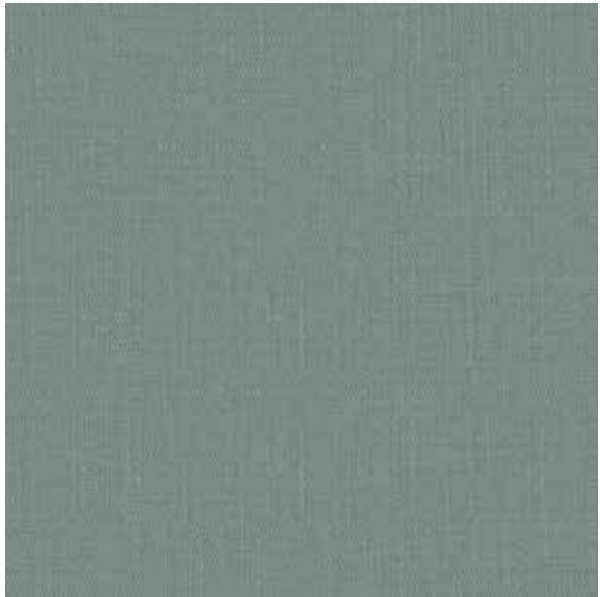
This plain textured fabric manufactured with excellent quality yarns, creates an impression of sand grains. The product has an uneven feel and an elegant appearance. It is a perfect curtain draping to your doors, windows and has a raw as well as soothing surface to it.



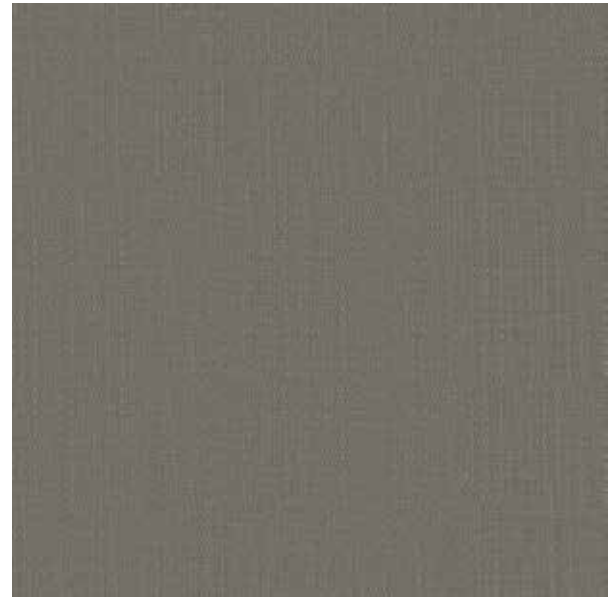
AVENA-AQUA



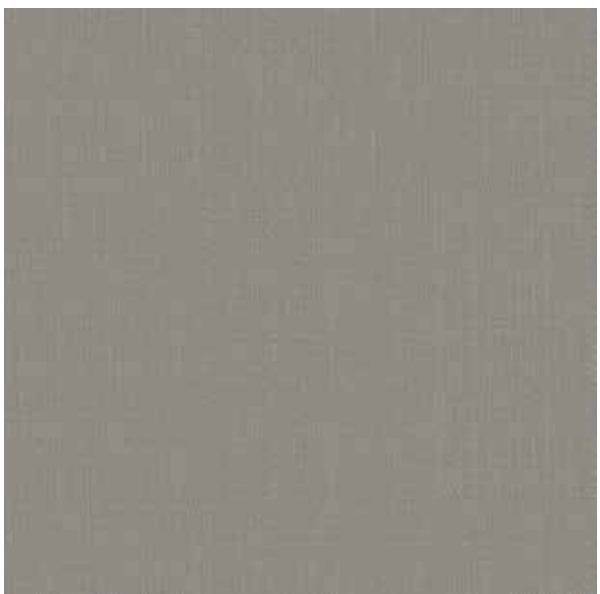
AVENA-SILVER



AVENA-SURF



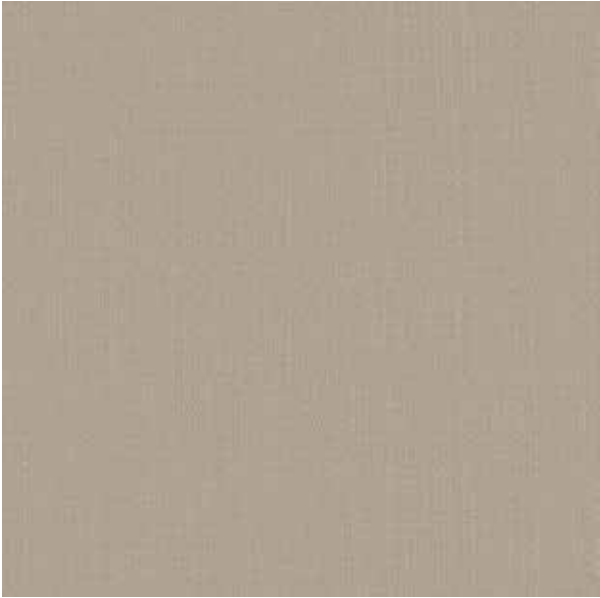
AVENA-GREYSTONE



AVENA-FLINT



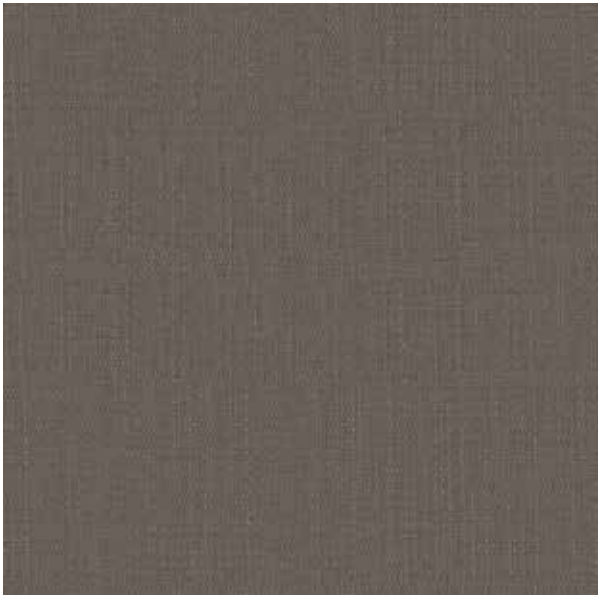
AVENA-CASHEW



AVENA-WILLOW



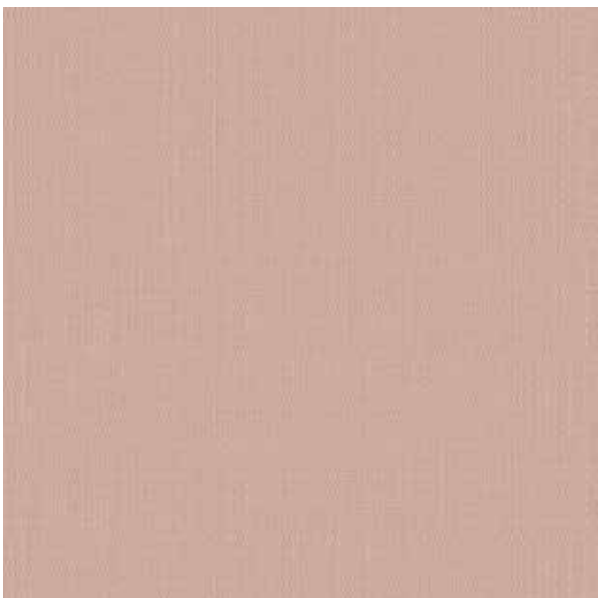
AVENA-WHEAT



AVENA-TAUPE



AVENA-BEIGE



AVENA-BLUSH



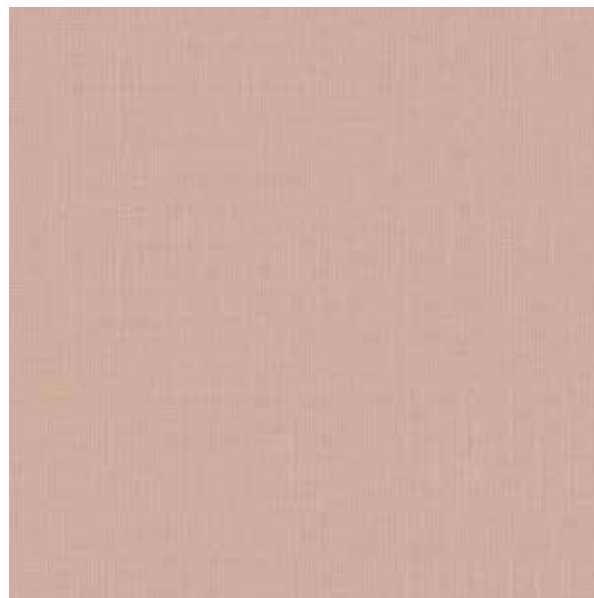
NORA

(13 Colourways)

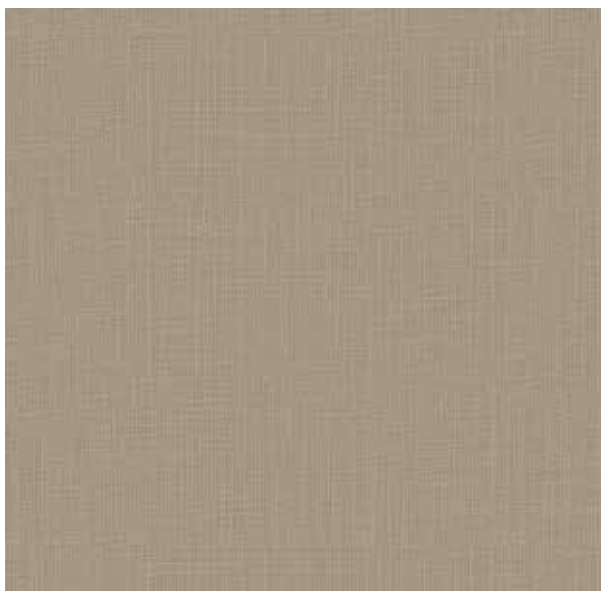
The fabric highlights a muted tone. It provides a soft touch and smooth drape, making it appropriate for curtains. The minimalist yet chic plain is available in thirteen soothing colors.



NORA-LINEN



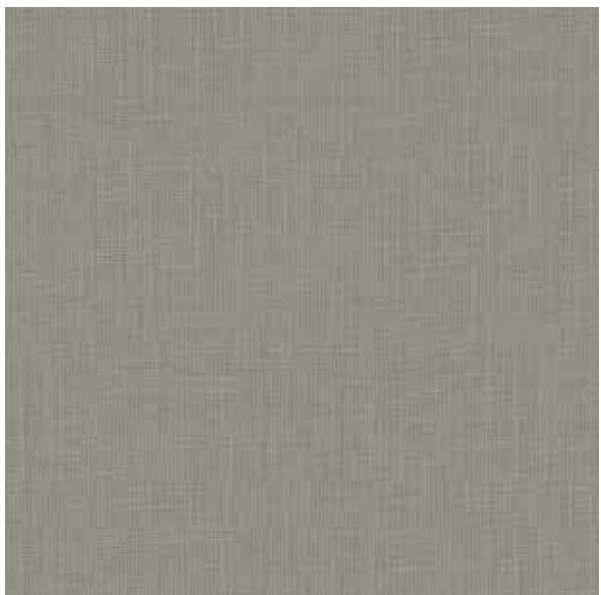
NORA-BLUSH



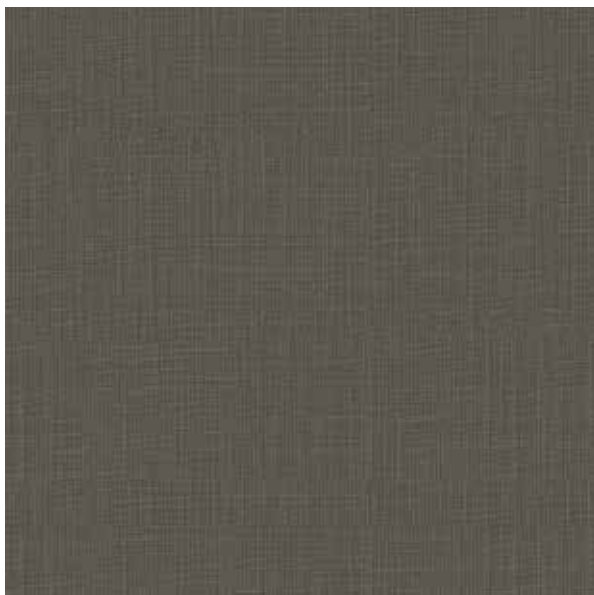
NORA-CASHEW



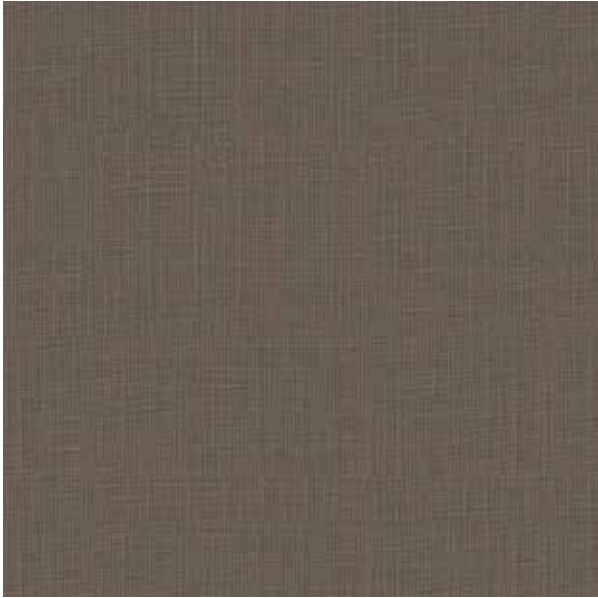
NORA-DOVE



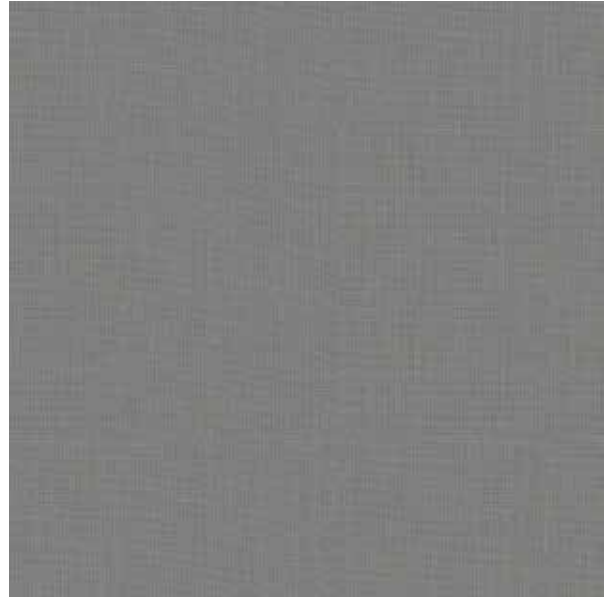
NORA-FLINT



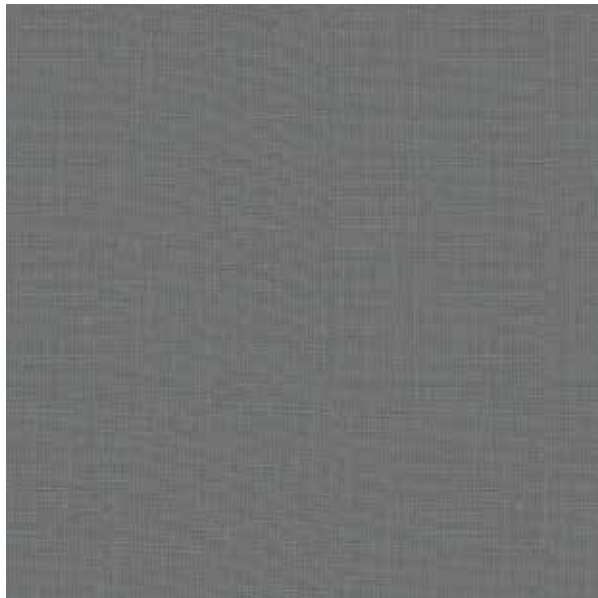
NORA-GREYSTONE



NORA-TAUPE



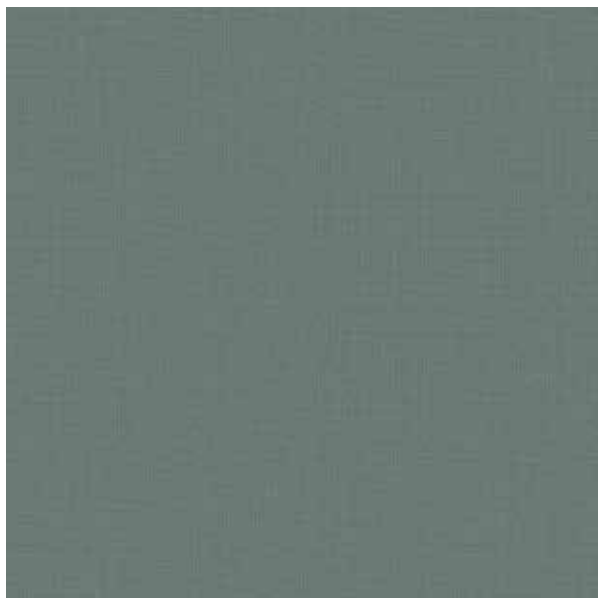
NORA-SMOKE



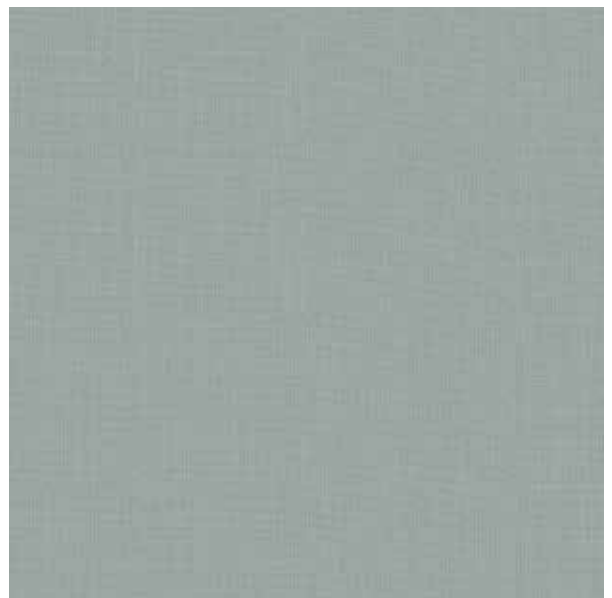
NORA-METAL



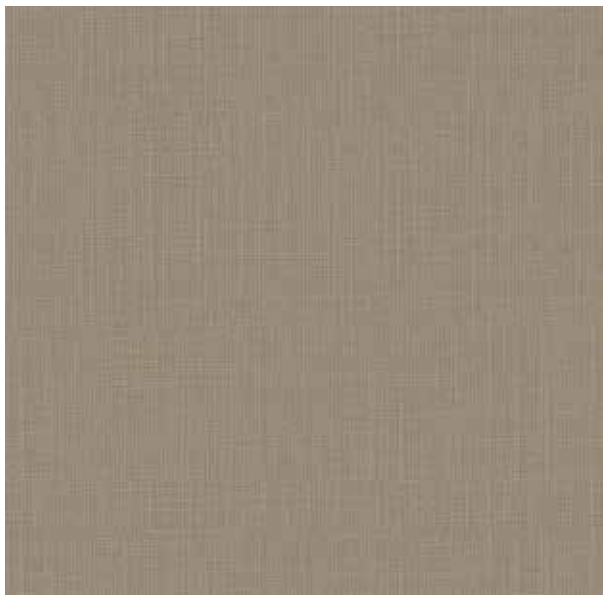
NORA-AQUA



NORA-SURF







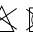
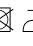

NORA-SILVER



NORA-WILLOW

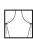




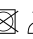



Technical Details

Product Name : Nora	Rec. Usage :  
Width in CM : 140	Care Instructions :      
Repeat size in CM : Hor (1cm) x Ver (1cm)	Martindale : -
Composition : 100% PES	Piling : 4
Weight GSM : 270	Colour Fastness : 3-4



Technical Details

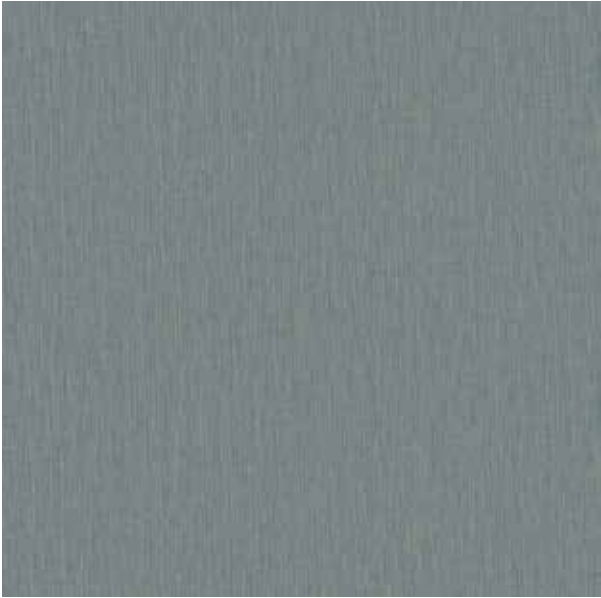
Product Name : Avena	Rec. Usage :  
Width in CM : 140	Care Instructions :     
Repeat size in CM : Hor (0) x Ver (0)	Martindale : -
Composition : 94% PES, 6% LI	Piling : 4
Weight GSM : 348	Colour Fastness : 3-4



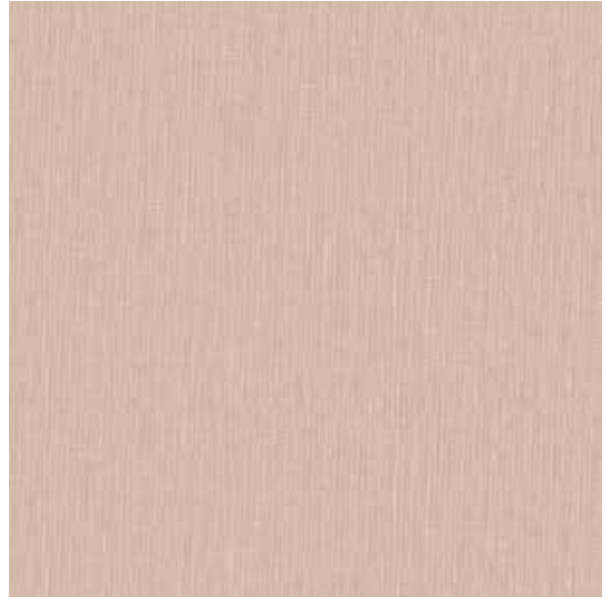
LINO

(11 Colourways)

Having a rich texture ,this fabric has a range of colors with a rich feel to it. Nothing has been left to chance; the softness, the volume or the choice of material. The intertwining yarns give the weave a stability, along with startling and exquisite construction. 'Lino' is ideal for draping as curtains.



LINO-AQUA



LINO-BLUSH



LINO-CASHEW



LINO-DOVE



LINO-FLINT



LINO-GREYSTONE



LINO-MUSHROOM



LINO-RIVER



LINO-SURF




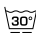





LINO-TAUPE



LINO-WILLOW



Technical Details

Product Name : Lino	Rec. Usage : 
Width in CM : 140	Care Instructions :      
Repeat size in CM : Hor (0) x Ver (0)	Martindale : -
Composition : 52% PES, 48% CO	Piling : 4
Weight GSM : 368	Colour Fastness : 3-4



For any further details, Please feel free to Contact

09643403802, 0124-4632300

**Corp. Off: Plot No: 42, Sector 32,
Institutional Area, Gurugram-122003, Haryana (India)**

Email: crm@fandf.in | Website: www.fandf.online

