



F&F | FLOOR & FURNISHINGS
ELEGANCE DIMOUTS
— FABRICS —

MARKETING BRIEF



ELEGANCE DIMOUTS

Introducing ELEGANCE DIMOUTS, a range of curtain fabrics that are perfect for creating a cozy and inviting ambience in any space. These curtains are made from high-quality materials that prevent up to 80% of light penetration, making them ideal for use in rooms where you want to maintain a comfortable temperature.



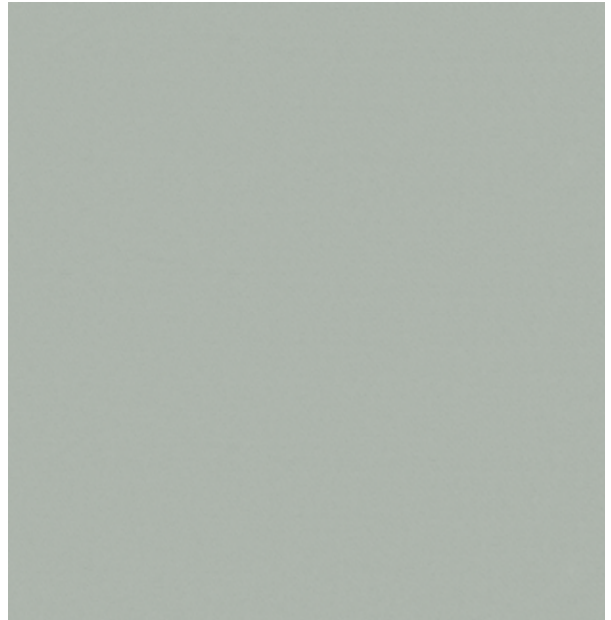
KOBE

(09 Colourways)

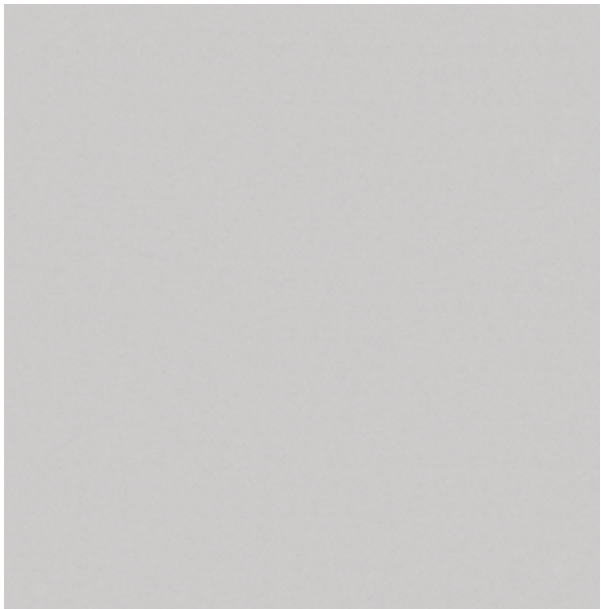
A smooth satin finish dimout curtain fabric ,is also energy-efficient, meaning it will help you save on your heating and cooling costs.



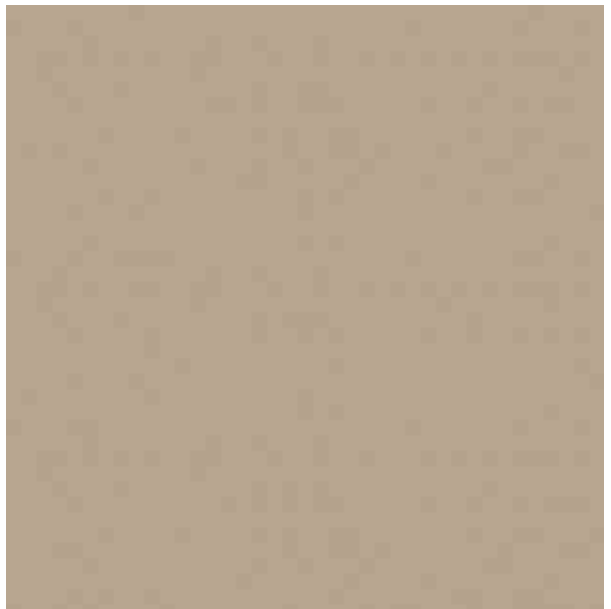
KOBE-AQUA



KOBE-MINT



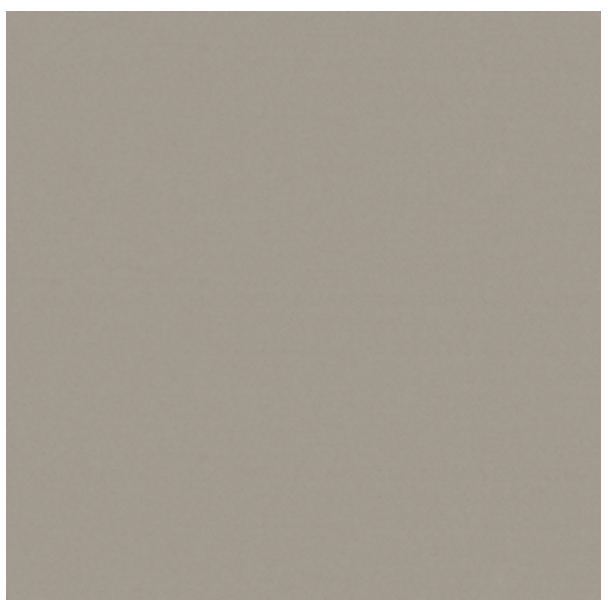
KOBE-FOG



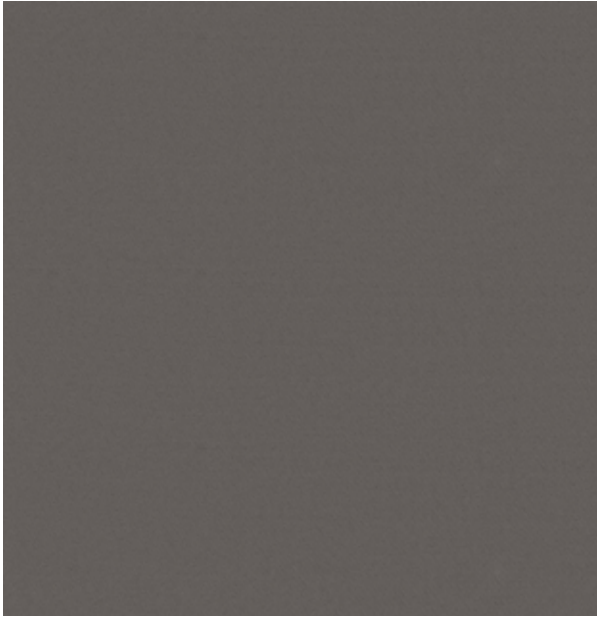
KOBE-ECRU



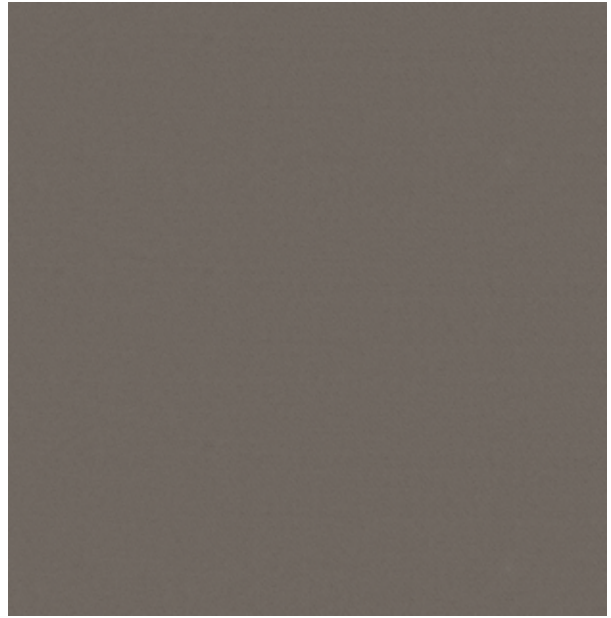
KOBE-PEARL



KOBE-SAND



KOBE-SMOKE

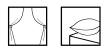



KOBE-FLINT



KOBE-CORAL

Technical Details

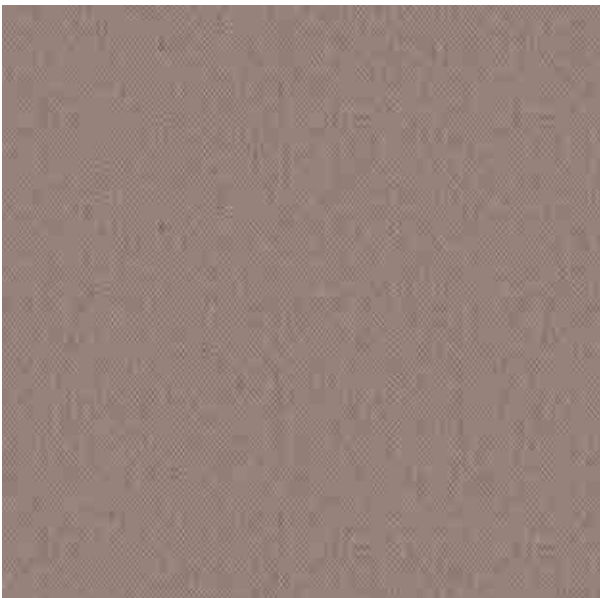
| | |
|--|--|
| Product Name : Kobe | Rec. Usage :  |
| Width in CM : 137 | Care Instructions :  |
| Repeat size in CM : Hor (1) x Ver (1) | Martindale : NA |
| Composition : 100% PES | Piling : 4-5 |
| Weight GSM : 265 | Colour Fastness : 4 |



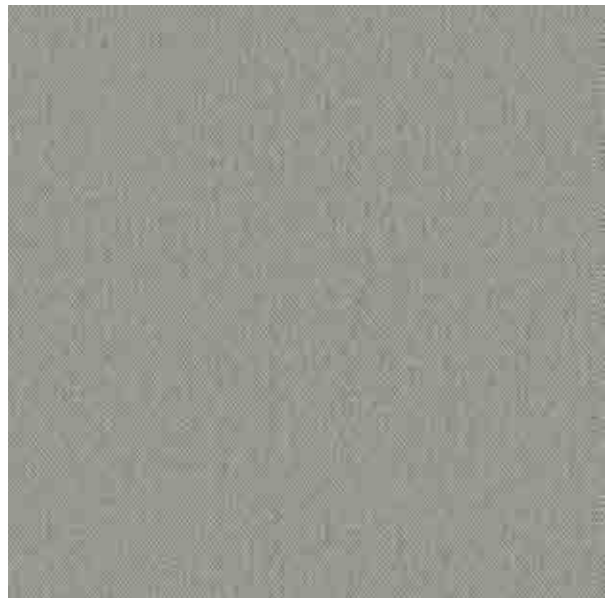
TRAVIS

(15 Colourways)

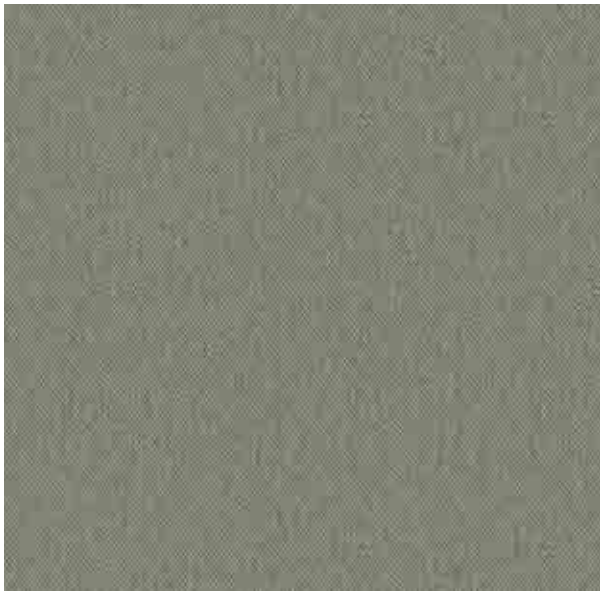
A textured matte-weave effect, you can customize the look of your space to suit your taste. Whether you're looking for a way to add privacy to your home or want to create an inviting atmosphere in your office or commercial space, TRAVIS is the perfect solution.



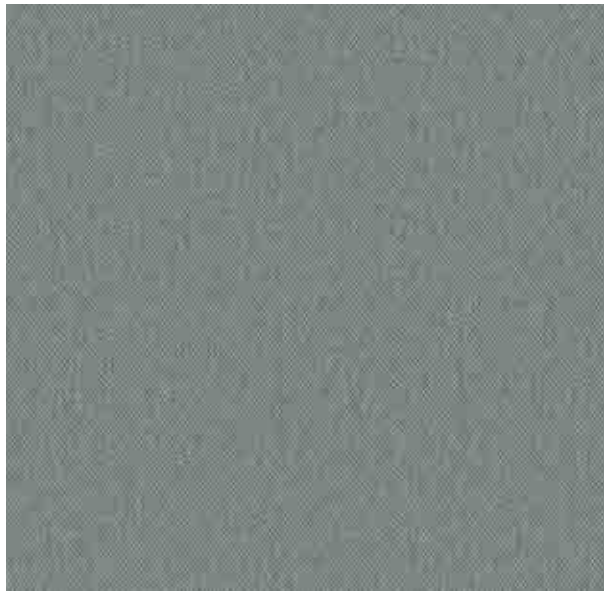
TRAVIS-BLUSH



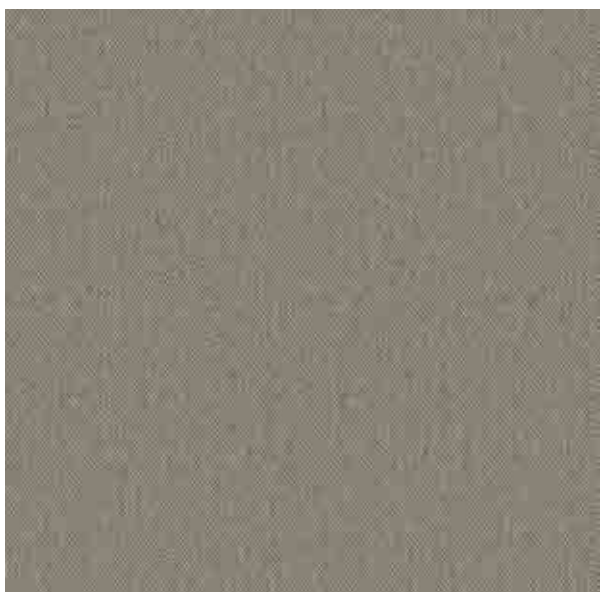
TRAVIS-MINT



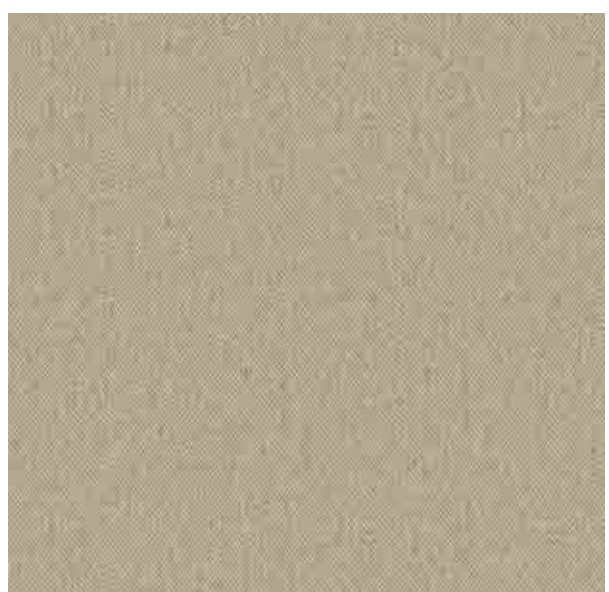
TRAVIS-RIVER



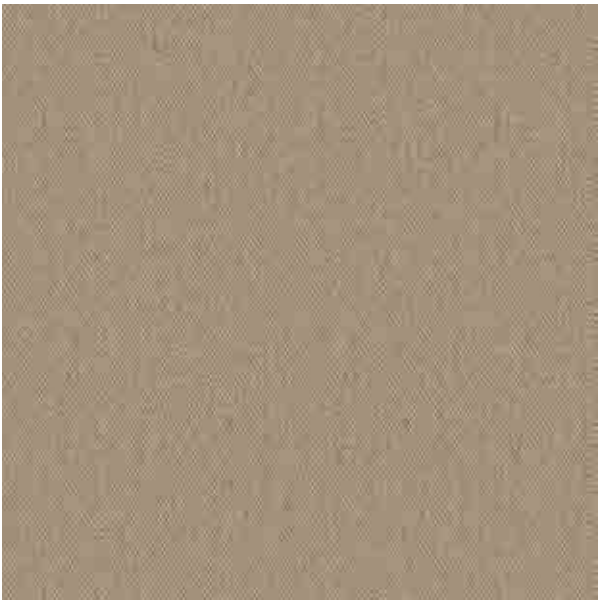
TRAVIS-AQUA



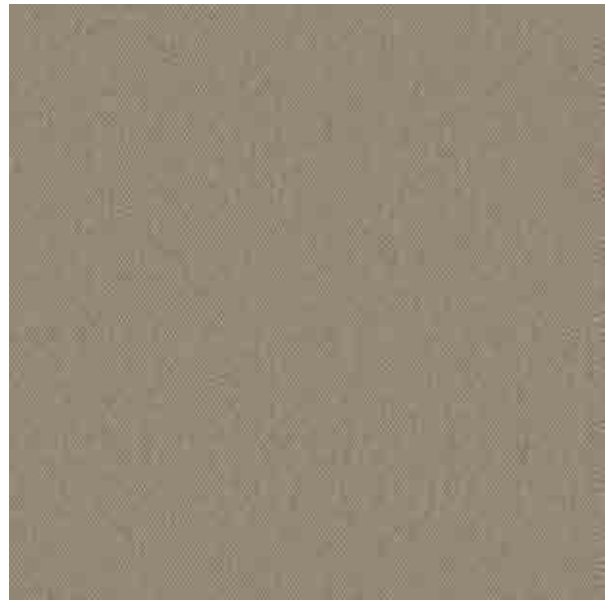
TRAVIS-CASHEW



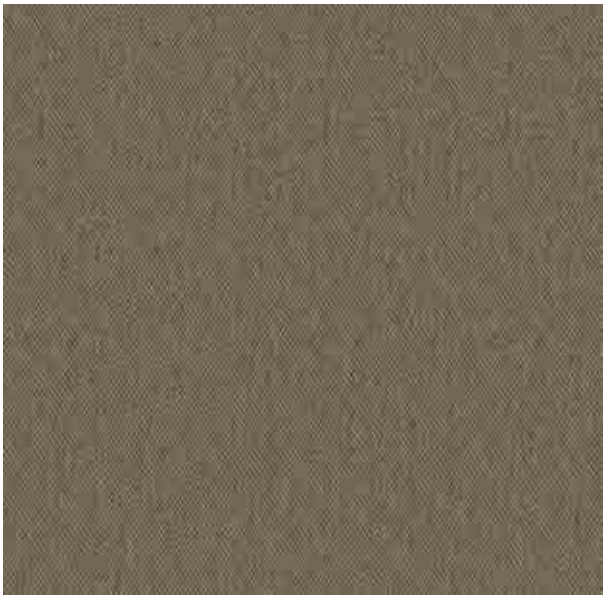
TRAVIS-LINEN



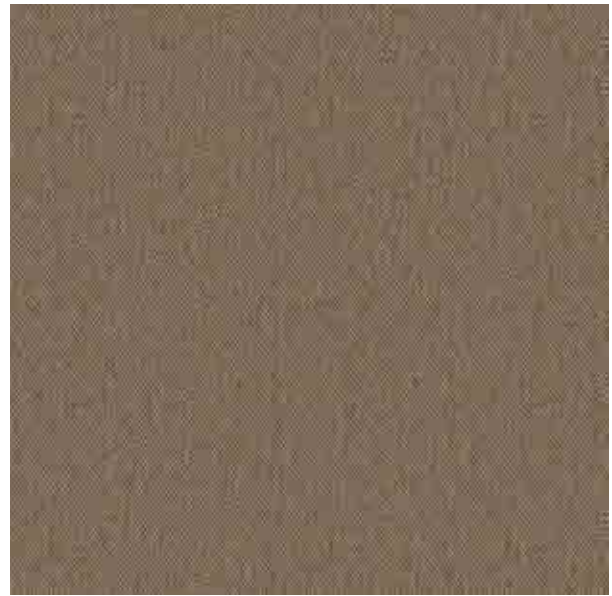
TRAVIS-ECRU



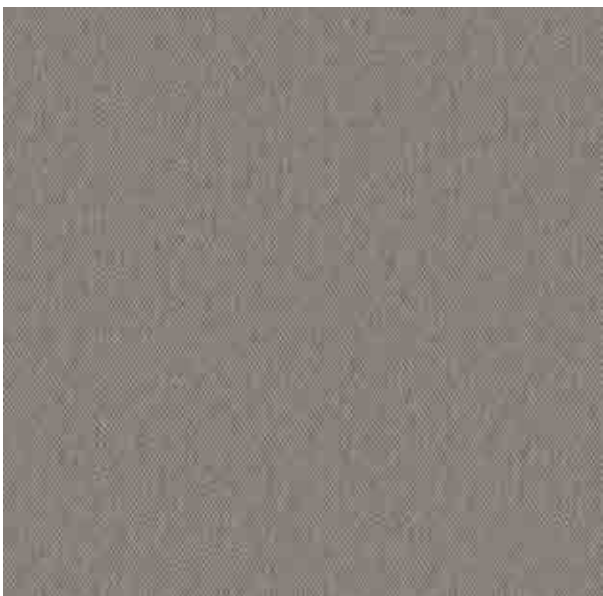
TRAVIS-WHEAT



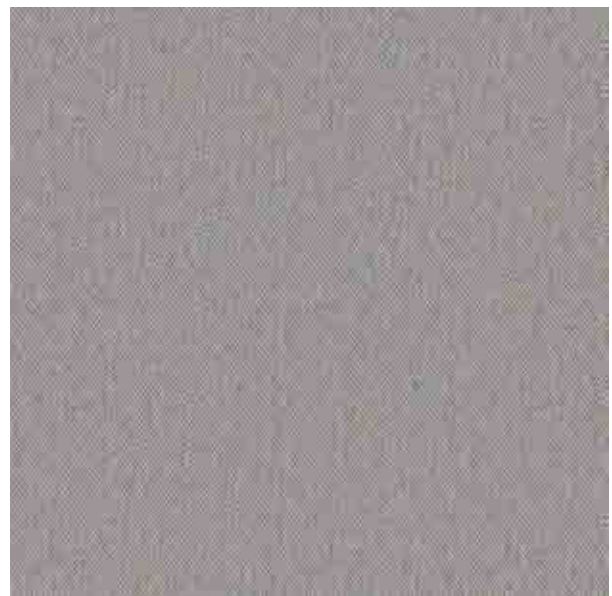
TRAVIS-SAND



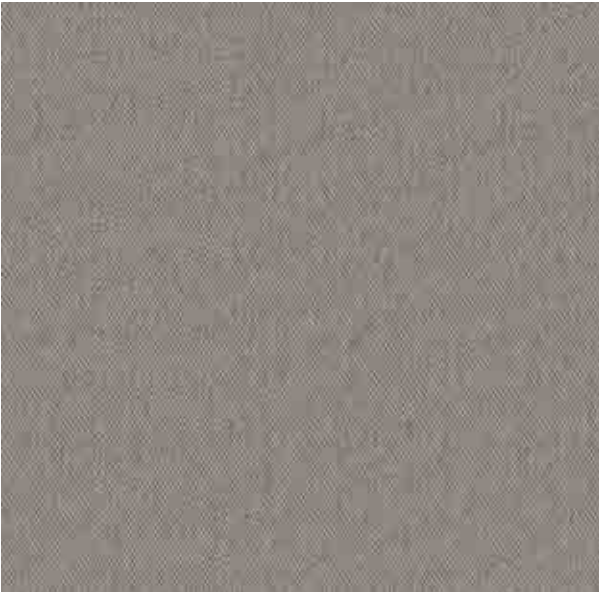
TRAVIS-ROCK



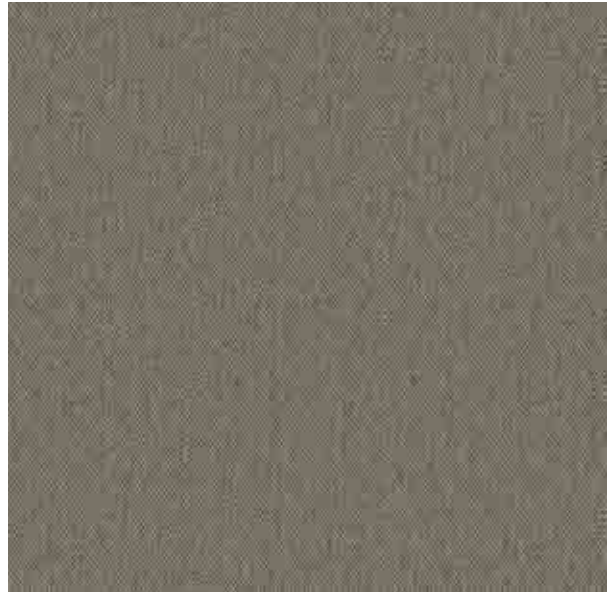
TRAVIS-MUSHROOM



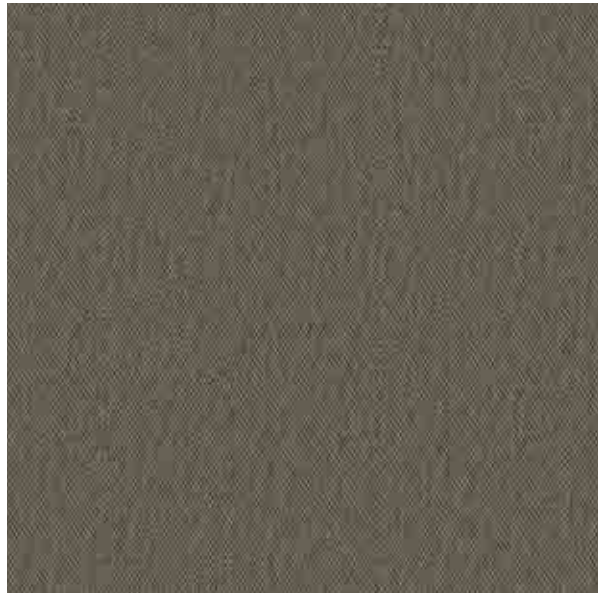
TRAVIS-FOG



TRAVIS-SMOKE




TRAVIS-TAUPE



TRAVIS-EARTH

Technical Details

| | |
|--|--|
| Product Name : Travis | Rec. Usage :  |
| Width in CM : 137 | Care Instructions :  |
| Repeat size in CM : Hor (1) x Ver (1) | Martindale : NA |
| Composition : 100% PES | Piling : 4-5 |
| Weight GSM : 305 | Colour Fastness : NA |

For any further details, Please feel free to Contact

09643403802, 0124-4632300

**Corp. Off: Plot No: 42, Sector 32,
Institutional Area, Gurugram-122003, Haryana (India)**

Email: crm@fandf.in | Website: www.fandf.online

