



F&F | FLOOR & FURNISHINGS  
AVENUE PLAINS III & IV  
— FABRICS —  
MARKETING BRIEF



## AVENUE PLAINS III & IV

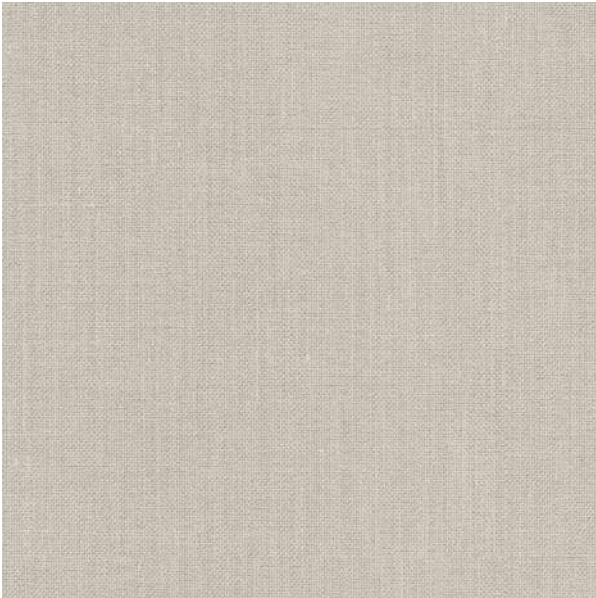
*This collection has a subtle, non-directional design and drapes beautifully. Woven with luxurious yarn, carefully wrapped with sturdy elegance. Avenue plains are both soft and hard wearing. Fabrics from this collection are beautiful for curtaining in both domestic and contract settings.*



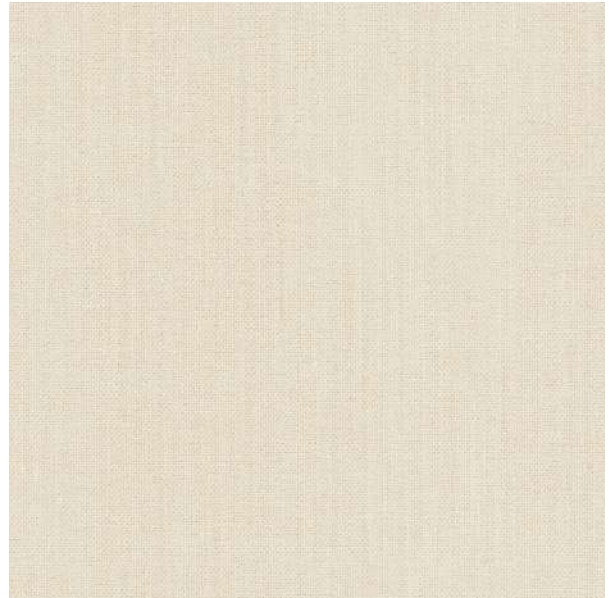
# ARLO

**( 17 Colourways )**

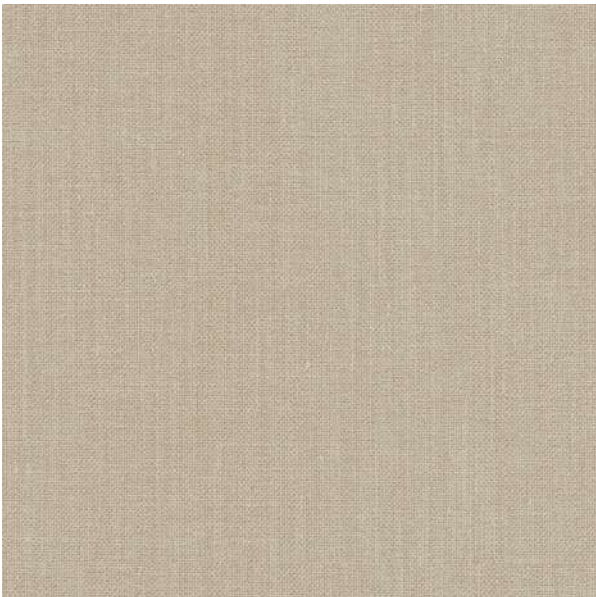
A fabric made out of entwining of shiny warp and weft, having alluring colors and light weighted fiber. This cloth has a graceful drape and is available in a multitude of earthy colors.



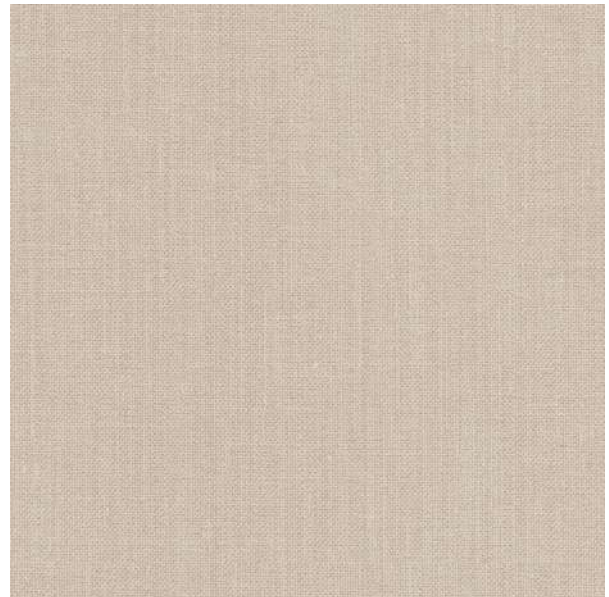
ARLO-DOVE



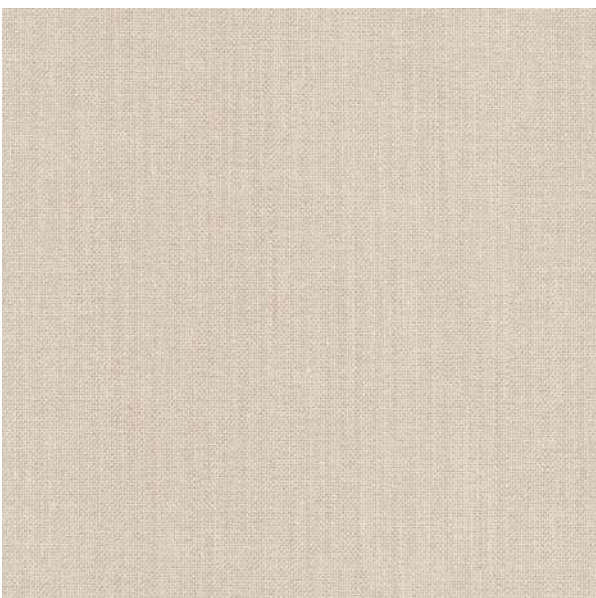
ARLO-BEIGE



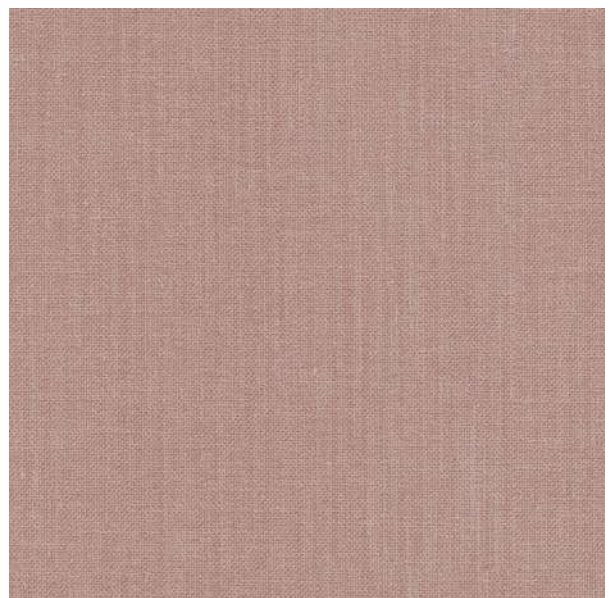
ARLO-WILLOW



ARLO-CREAM



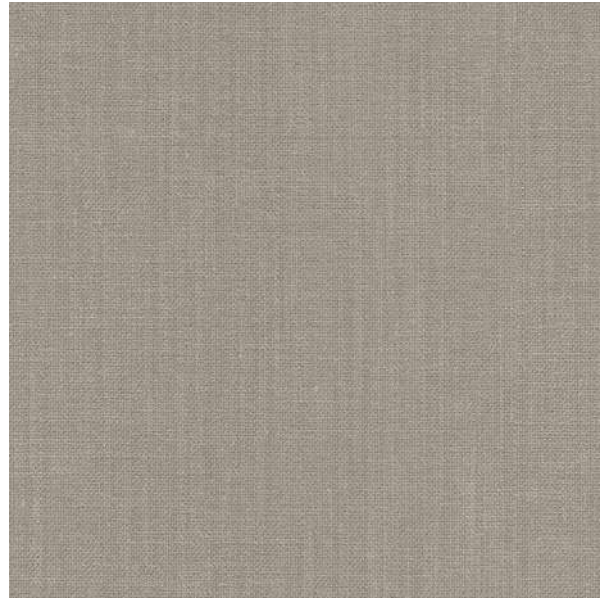
ARLO-STUCCO



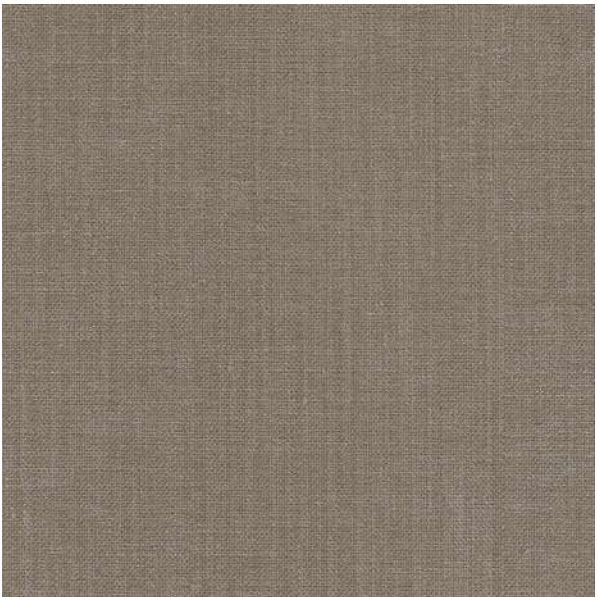
ARLO-RHUBARB



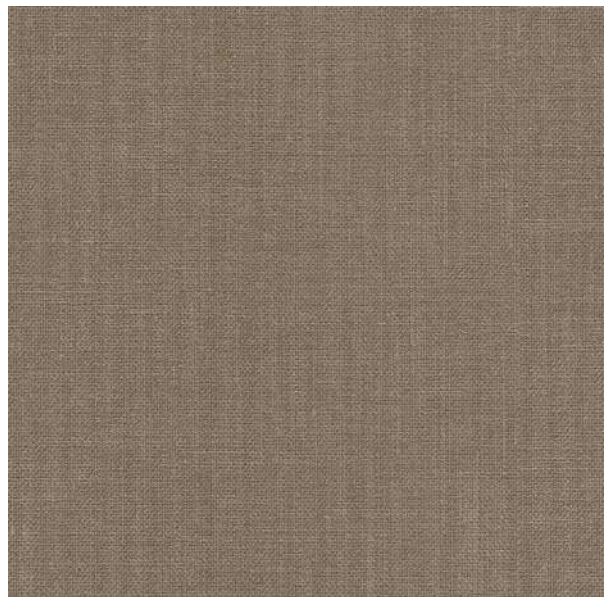
ARLO-BLUSH



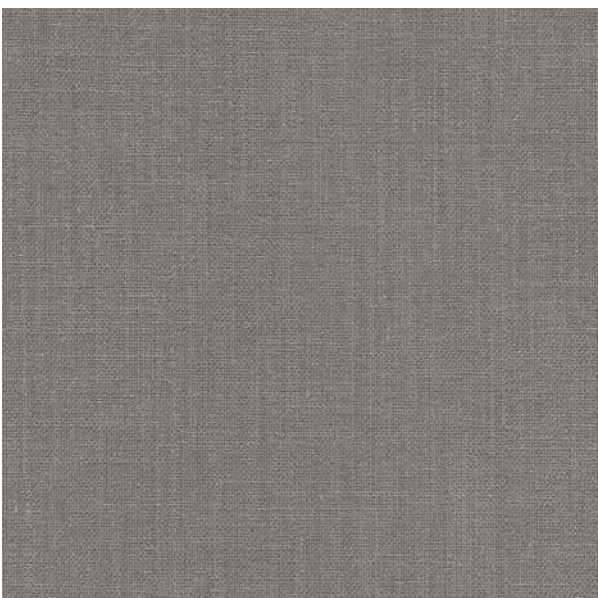
ARLO-SILVER



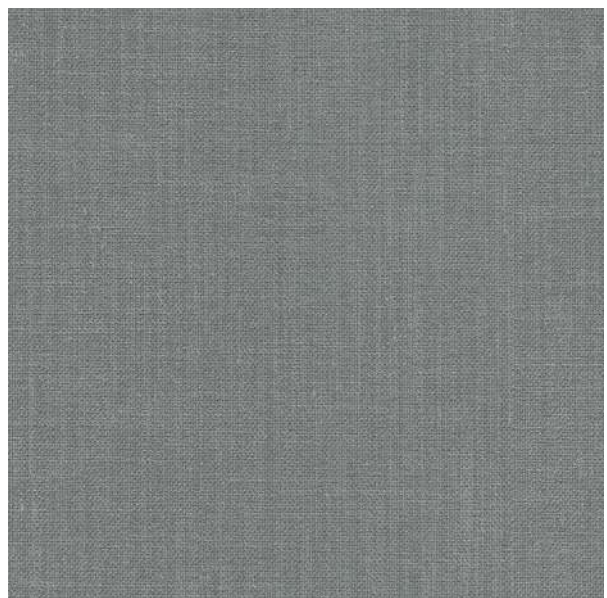
ARLO-TAUPE



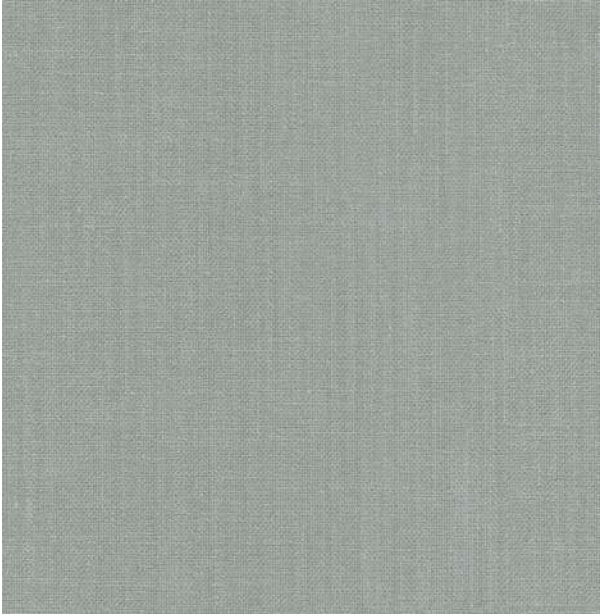
ARLO-WHEAT



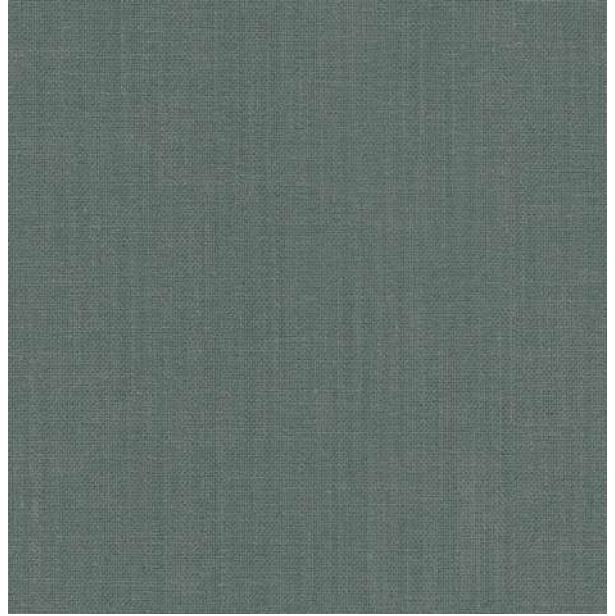
ARLO-METAL



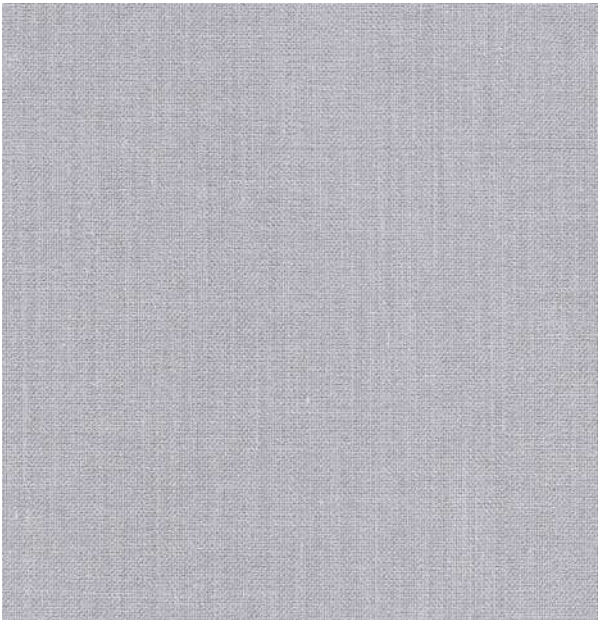
ARLO-RIVER



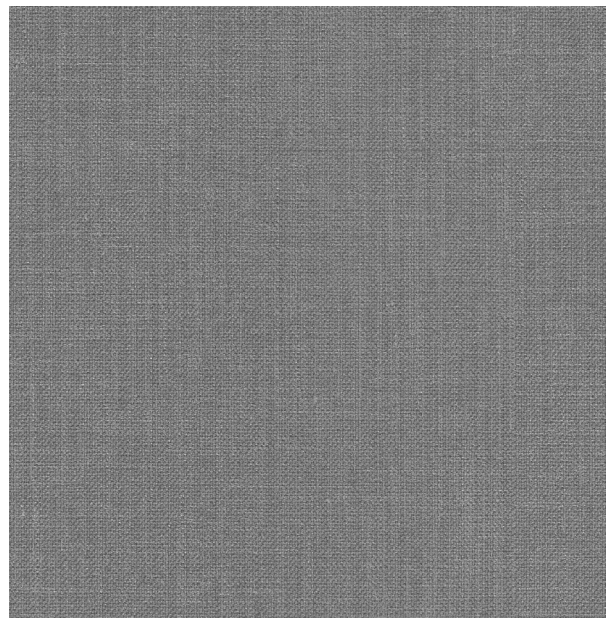
ARLO-MINT



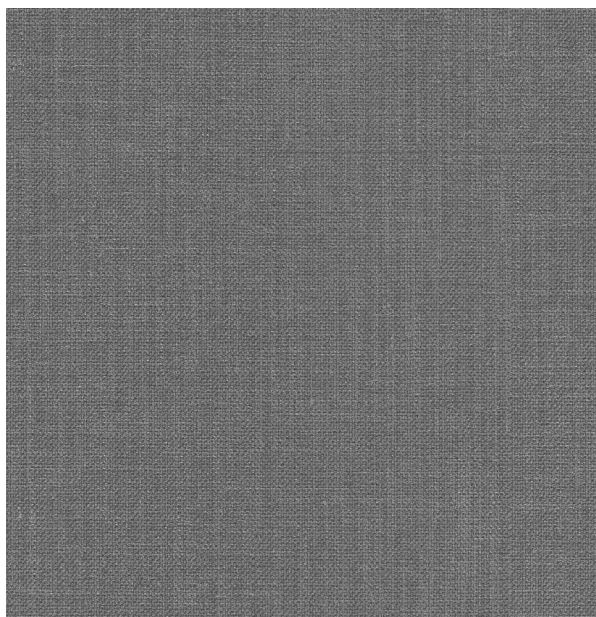
ARLO-AQUA



ARLO-FOG








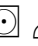

ARLO-GUNMETAL/GREYSTONE



ARLO-STEEL



### Technical Details

<b>Product Name</b> : ARLO	<b>Rec. Usage</b> :  
<b>Width in CM</b> : 140	<b>Care Instructions</b> :     
<b>Repeat size in CM</b> : Hor (0) x Ver (0)	<b>Martindale</b> : NA
<b>Composition</b> : 100% PES	<b>Piling</b> : 4
<b>Weight GSM</b> : 330	<b>Colour Fastness</b> : 4

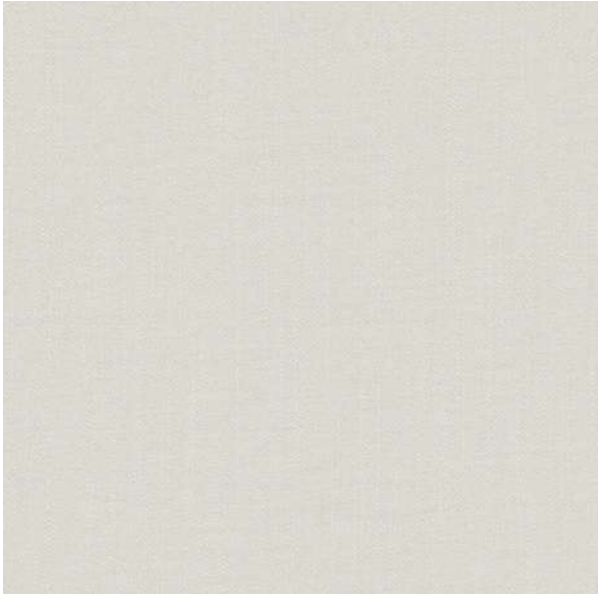


# FIR

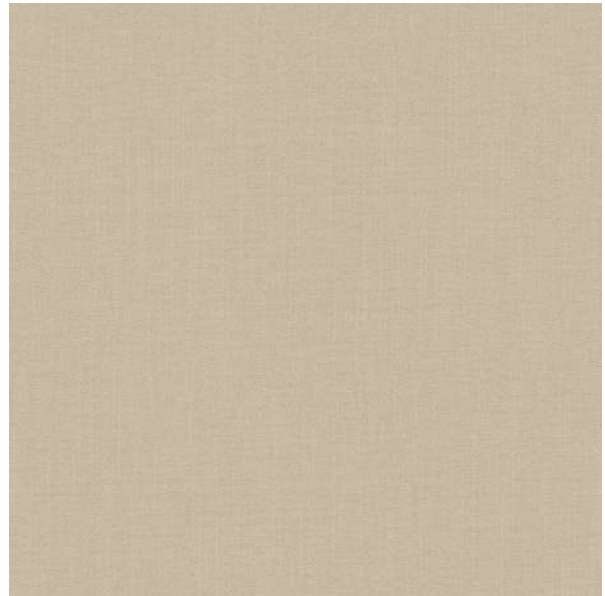
( 16 Colourways )

Fir is a truly versatile dense linen texture, which is used for curtaining. Woven with yarn in varied thicknesses and tones, the texture gives a hand-woven feel.

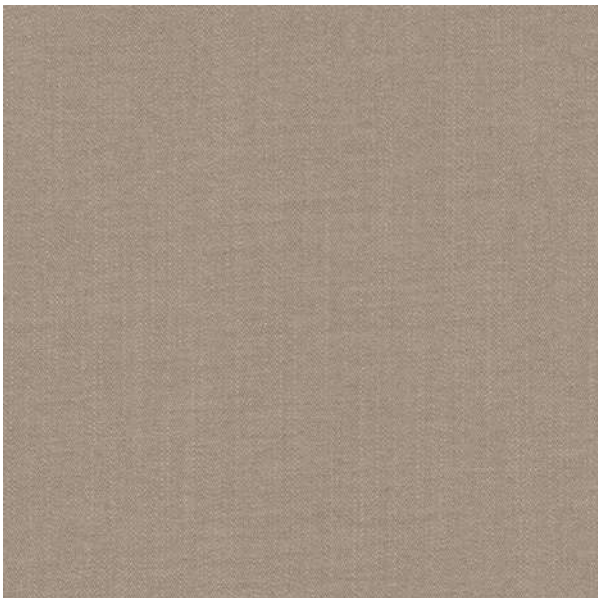




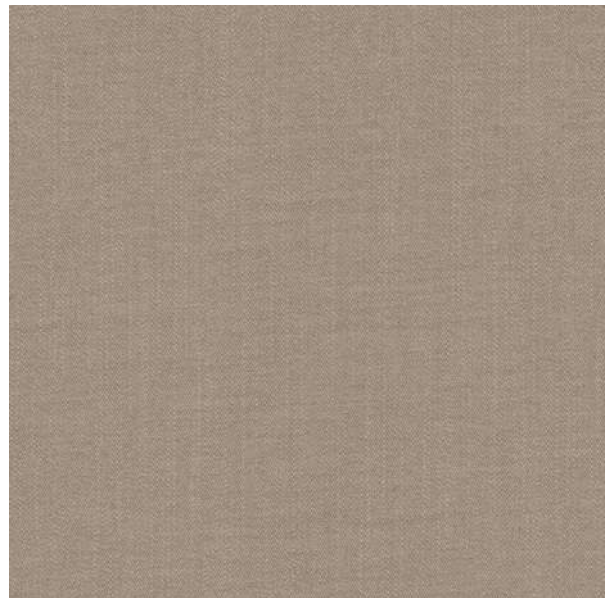
FIR-SNOW



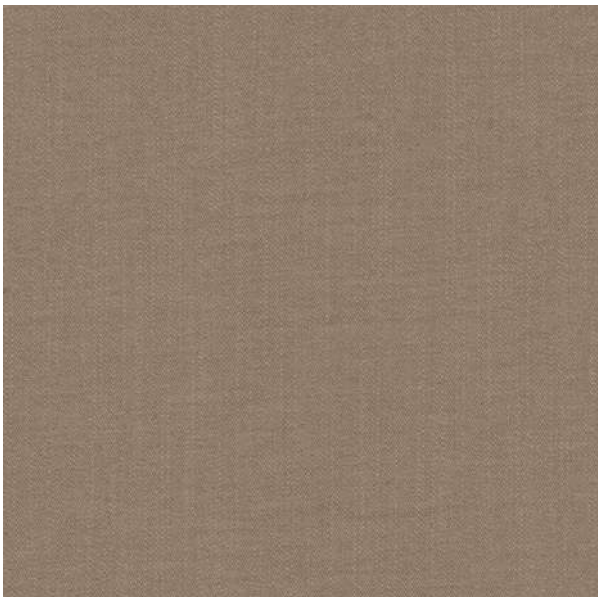
FIR-BEIGE



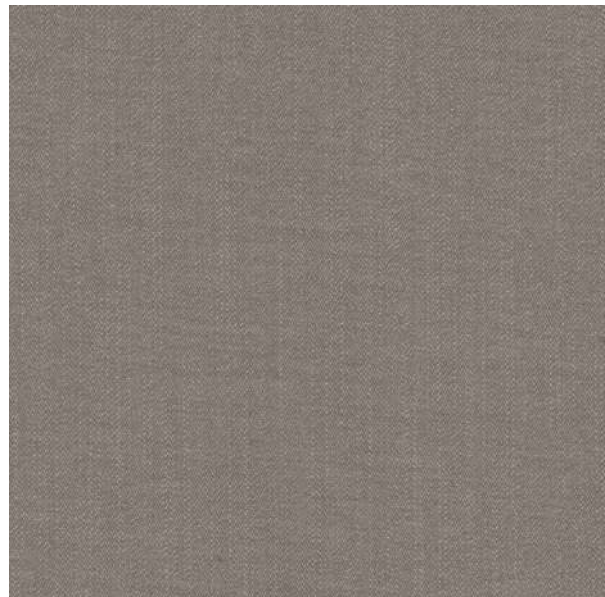
FIR-WILLOW



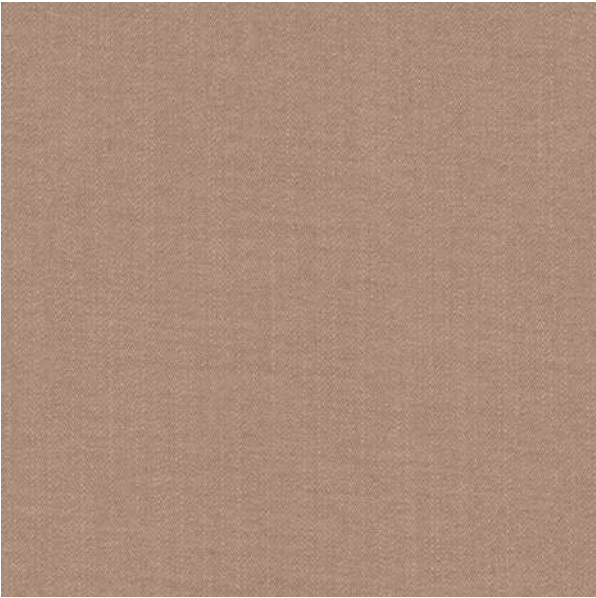
FIR-STUCCO



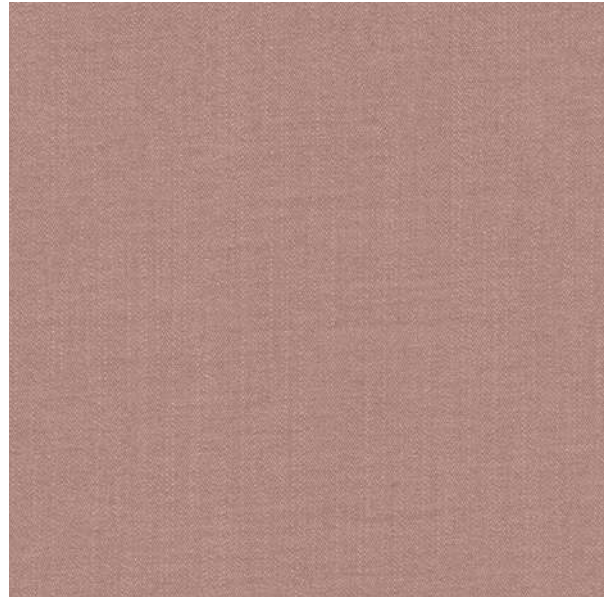
FIR-WHEAT



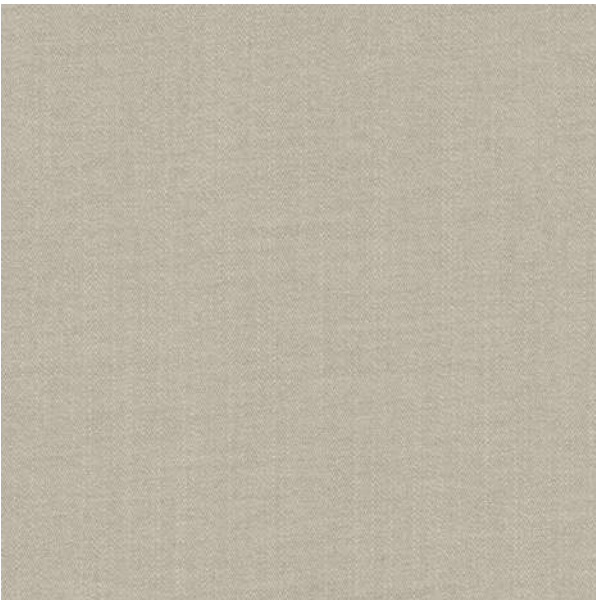
FIR-FLINT



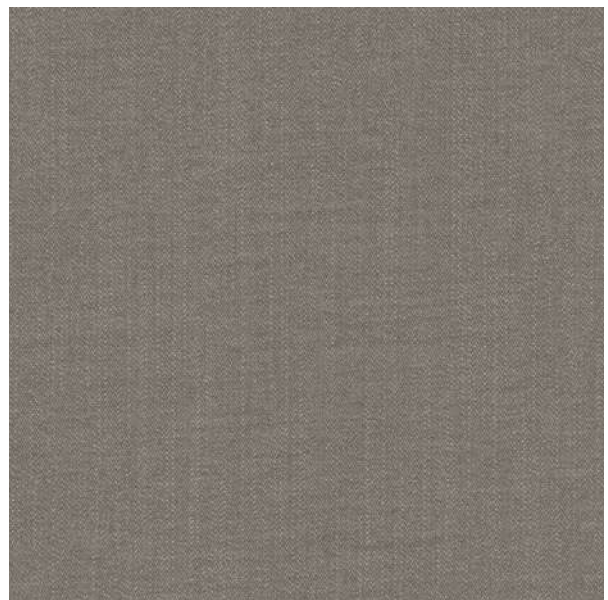
FIR-BLUSH



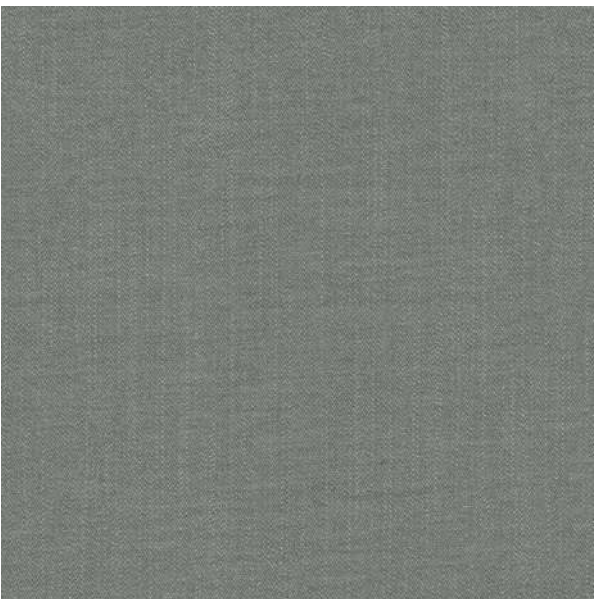
FIR-RHUBARB



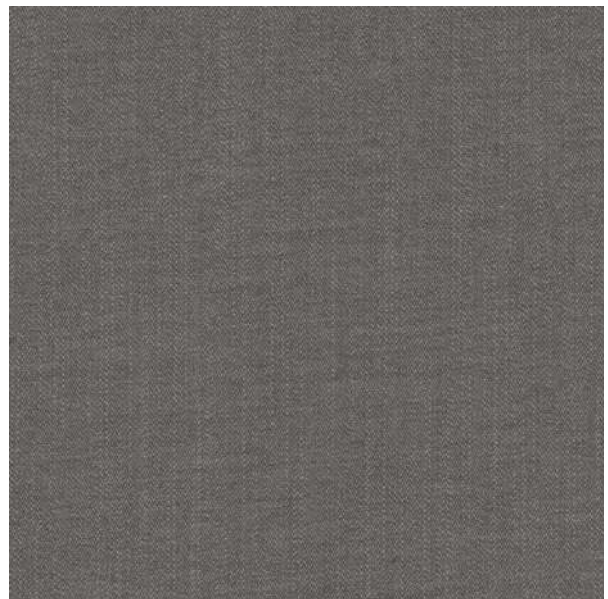
FIR-SESAME



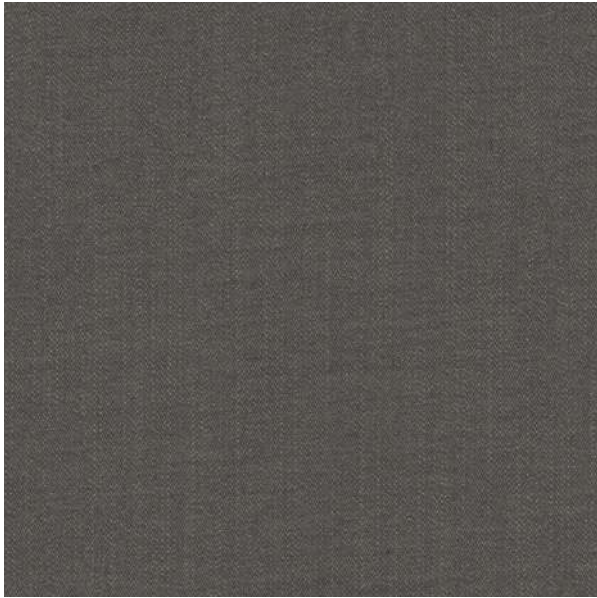
FIR-SILVER



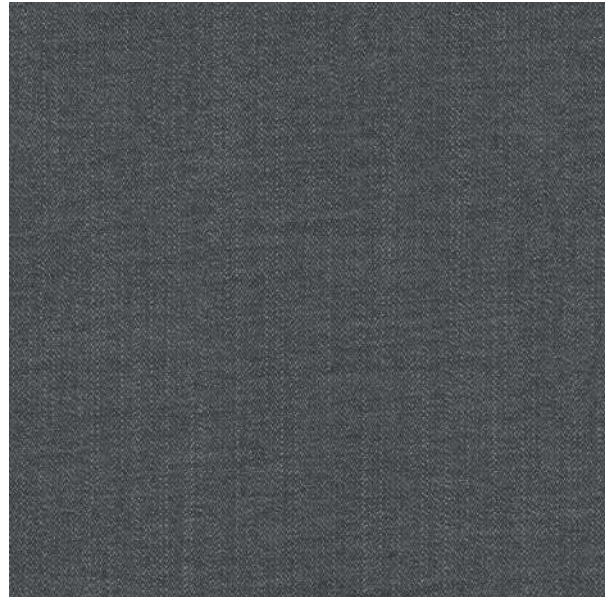
FIR-MINT



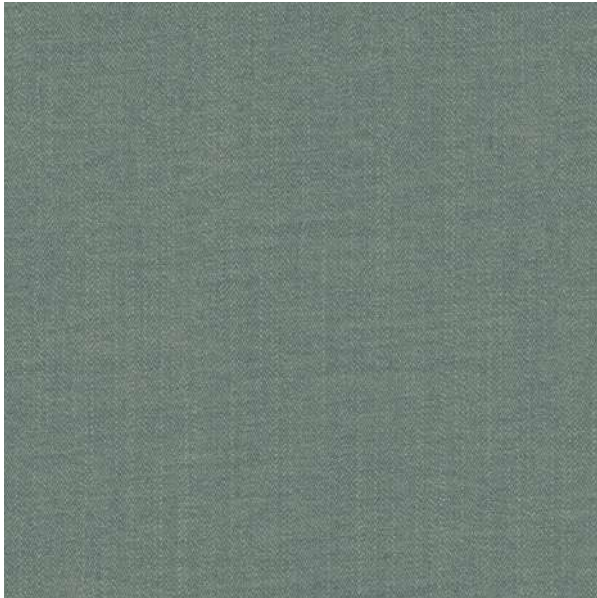
FIR-METAL



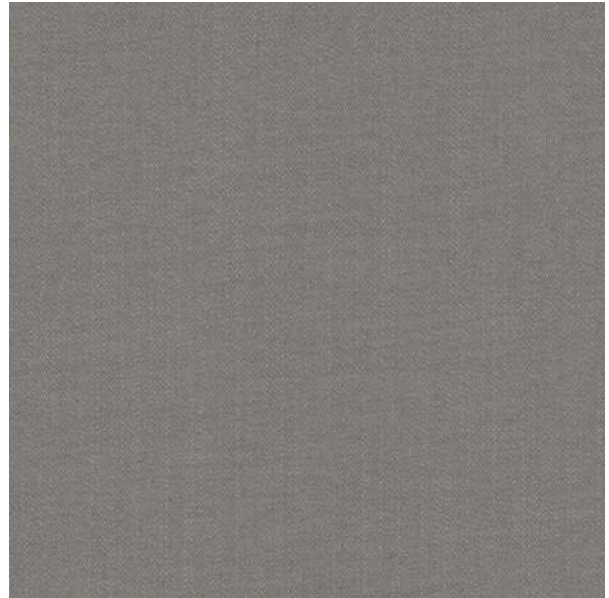
FIR-GREYSTONE



FIR-GUNMETAL

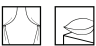



FIR-AQUA



FIR-STEEL

### Technical Details

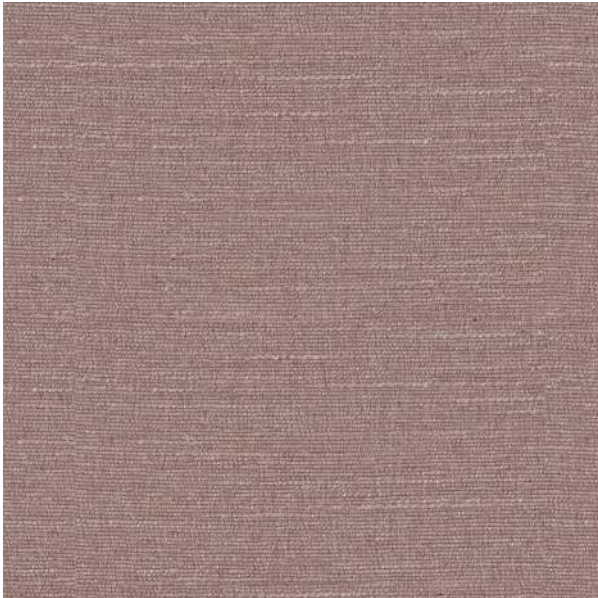
<b>Product Name</b> : FIR	<b>Rec. Usage</b> : 
<b>Width in CM</b> : 140	<b>Care Instructions</b> : 
<b>Repeat size in CM</b> : Hor (0) x Ver (0)	<b>Martindale</b> : NA
<b>Composition</b> : 54% CO , 46% PES	<b>Piling</b> : 4
<b>Weight GSM</b> : 231	<b>Colour Fastness</b> : 4



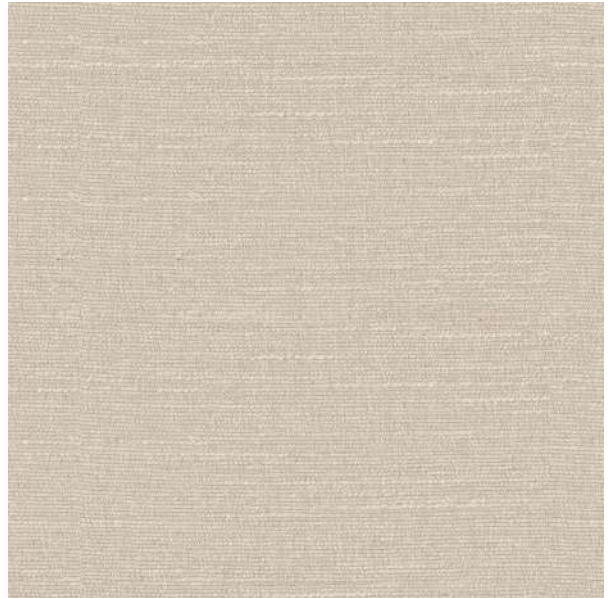
# CORTEX

( 15 Colourways )

This curtain design is the ideal texture for your windows and should look Cortex is a classic and elegant fabric suitable for both curtaining and upholstery. Sophisticated color combinations in warp and weft create a tasteful shade range, which lends itself into both classic and contemporary schemes.



CORTEX- BLUSH



CORTEX-CREAM



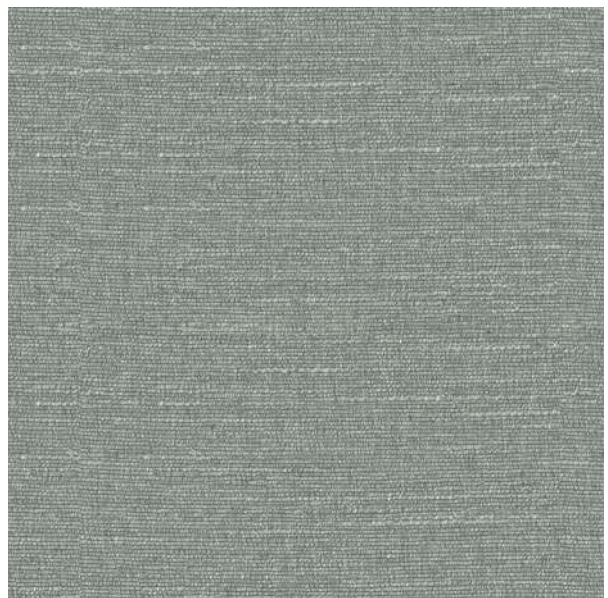
CORTEX-SESAME



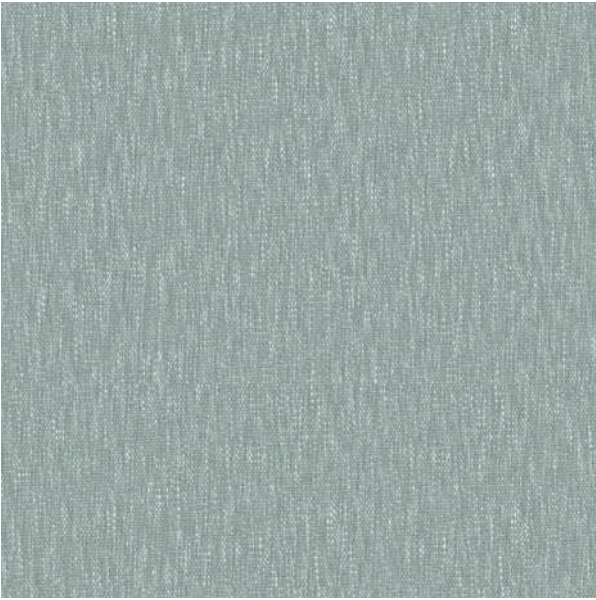
CORTEX-CASHEW



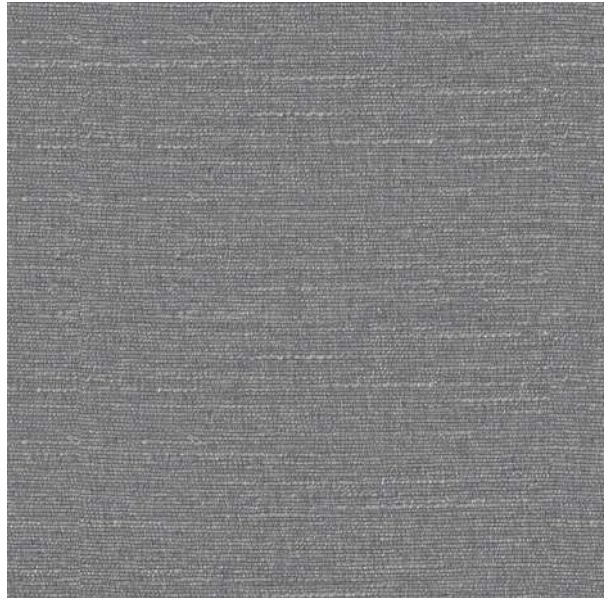
CORTEX-BLOSSOM



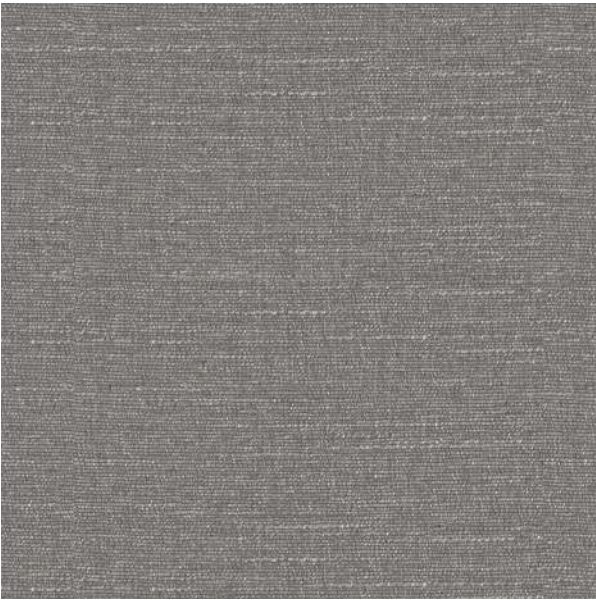
CORTEX-MINERAL



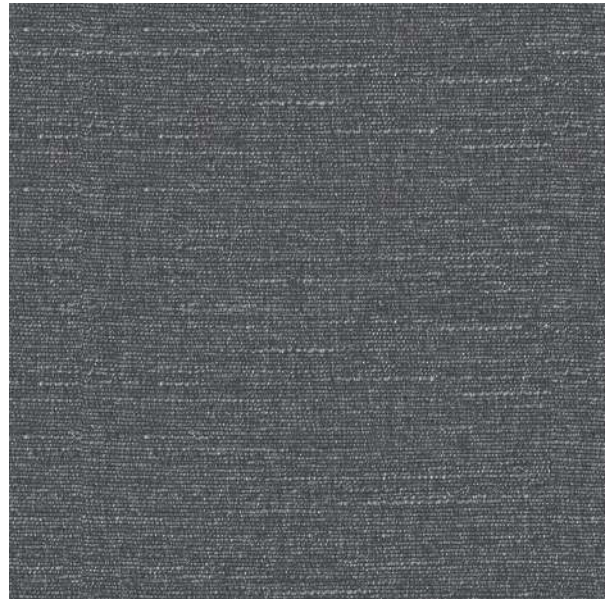
CORTEX-AQUA



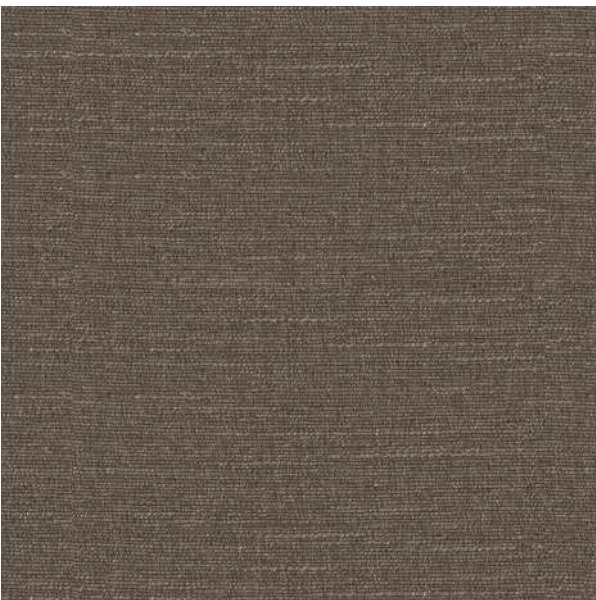
CORTEX-SILVER



CORTEX-FLINT



CORTEX-SLATE



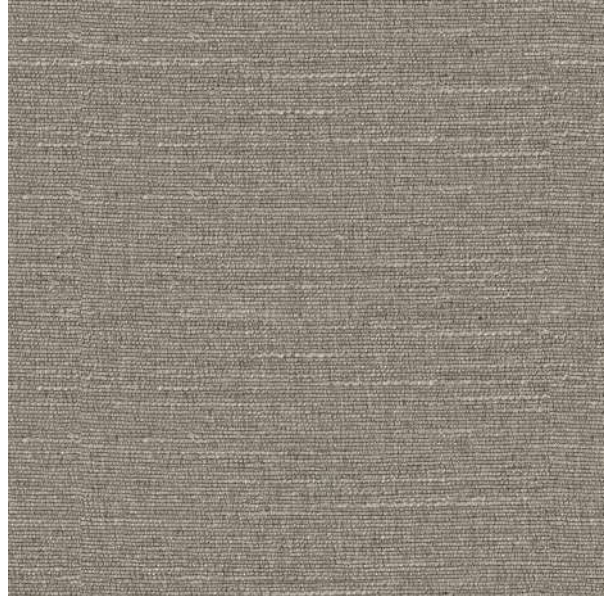
CORTEX-TAUPE



CORTEX-STUCCO



CORTEX-SAND

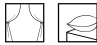



CORTEX-SPONGE



CORTEX-WILLOW

### Technical Details

<b>Product Name</b> : CORTEX	<b>Rec. Usage</b> : 
<b>Width in CM</b> : 140	<b>Care Instructions</b> : 
<b>Repeat size in CM</b> : Hor (0) x Ver (0)	<b>Martindale</b> : NA
<b>Composition</b> : 100% PES	<b>Piling</b> : 4
<b>Weight GSM</b> : 256	<b>Colour Fastness</b> : 4

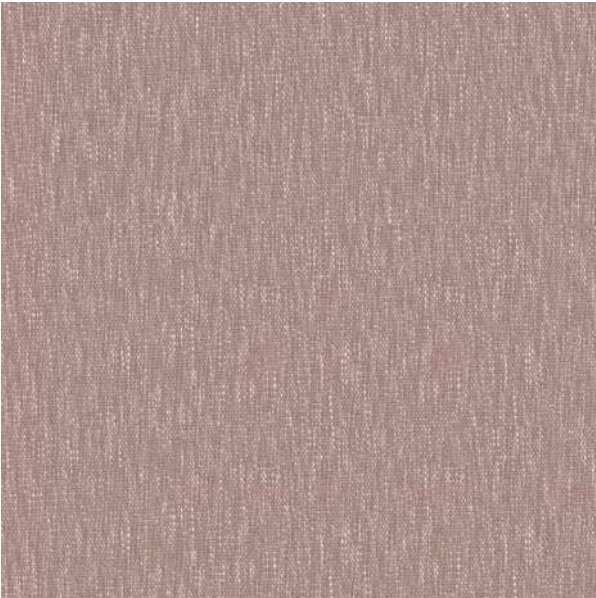


# DAZE

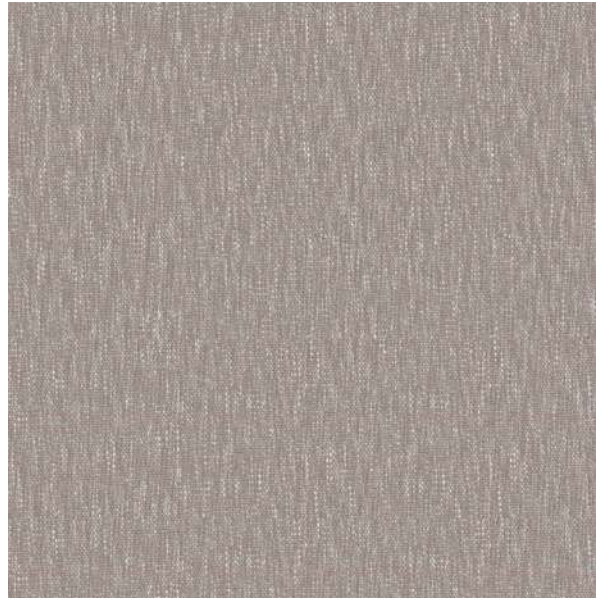
**( 11 Colourways )**

The feel of the fabric resembles ancient hand-loomed linen but adapted for a modern setting. Colors inspired by volcanic rocks. Daze is a modern classic, Available in calm, Neutral shades.

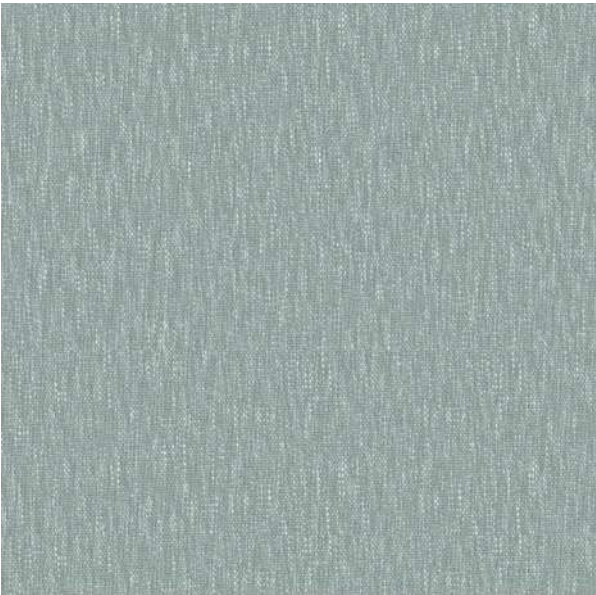




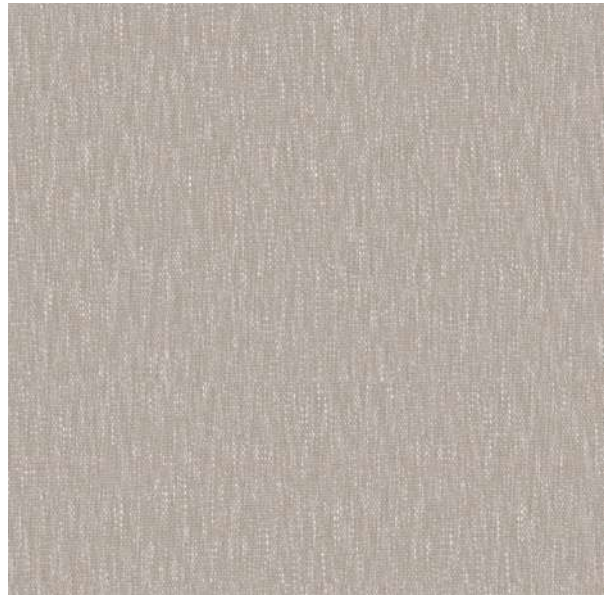
DAZE-BLUSH



DAZE-FOG



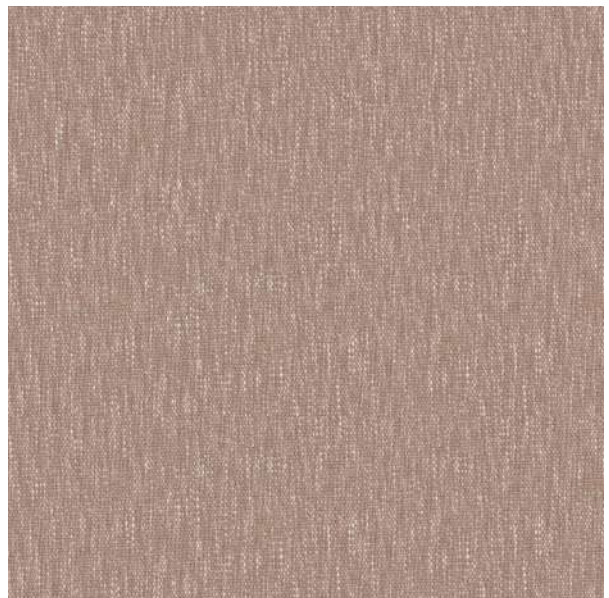
DAZE-AQUA



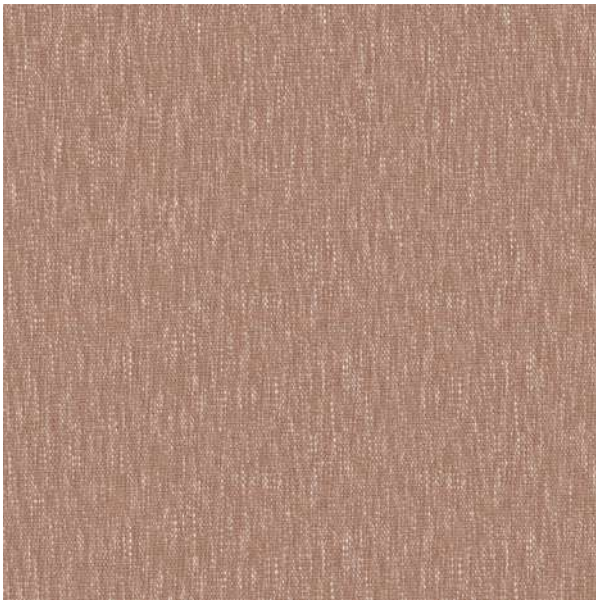
DAZE-WILLOW



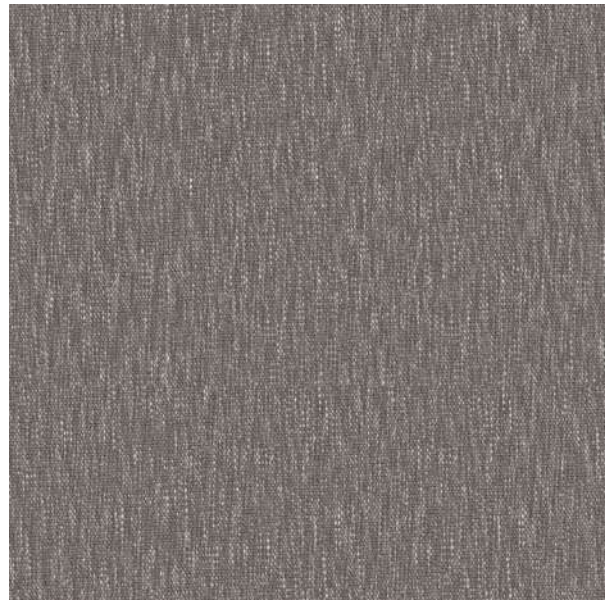
DAZE-BEIGE



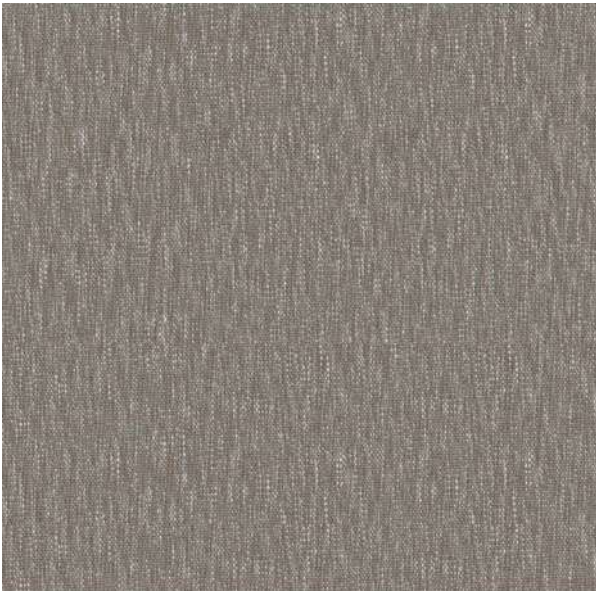
DAZE-CASHEW



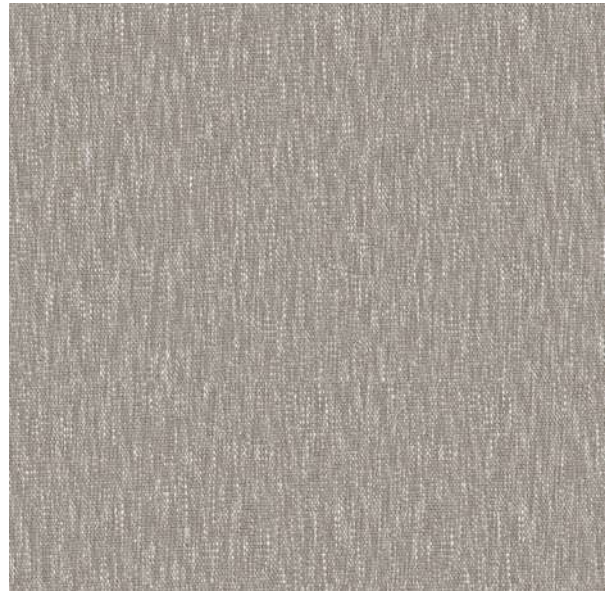
DAZE-BLOSSOM



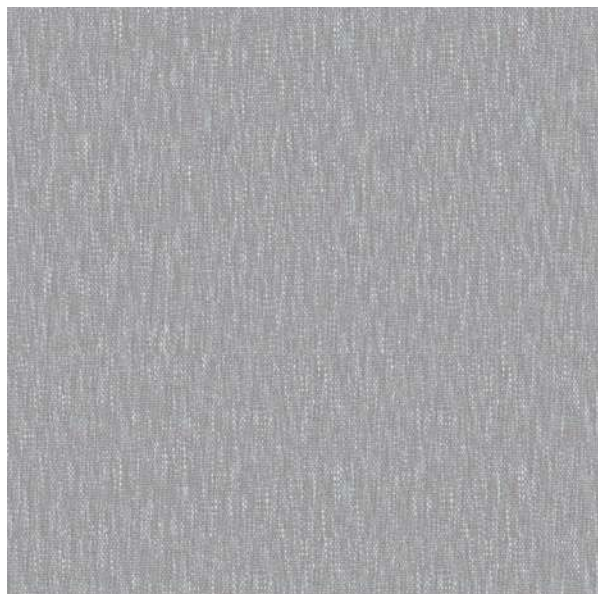
DAZE-TAUPE



DAZE-SAND



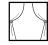






DAZE-SPONGE



DAZE-SILVER



### Technical Details

<b>Product Name</b> : Daze	<b>Rec. Usage</b> :  
<b>Width in CM</b> : 140	<b>Care Instructions</b> :     
<b>Repeat size in CM</b> : Hor (0) x Ver (0)	<b>Martindale</b> : NA
<b>Composition</b> : 92% PES, 8% CO	<b>Piling</b> : 4
<b>Weight GSM</b> : 360	<b>Colour Fastness</b> : 4



For any further details, Please feel free to Contact

**09643403802, 0124-4632300**

---

**Corp. Off: Plot No: 42, Sector 32,  
Institutional Area, Gurugram-122003, Haryana (India)**

Email: [crm@fandf.in](mailto:crm@fandf.in) | Website: [www.fandf.online](http://www.fandf.online)