



F&F | FLOOR & FURNISHINGS
ASTERIA DIMOUTS
— FABRICS —
MARKETING BRIEF



ASTERIA DIMOUTS

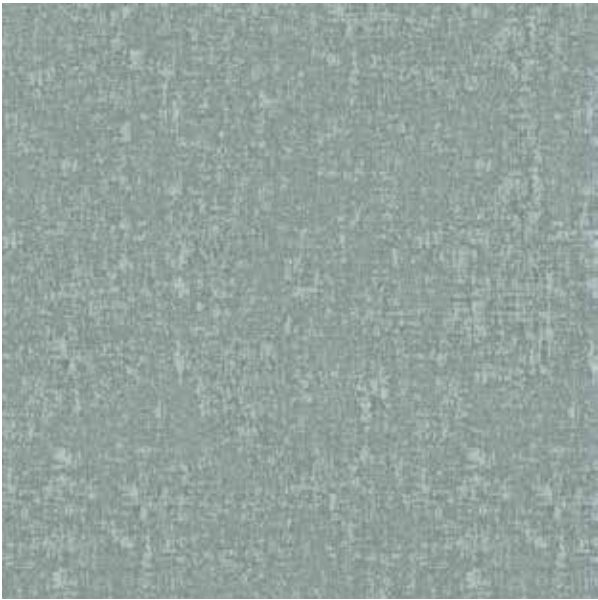
Asteria dimouts are the modern classics that effortlessly blend a contemporary ethos with luxury. The fabrics have a carefully-coordinated palette with subtle and pastel colors. This is a triple woven and cost effective collection, with an excellent dimout property. More desirable than a complete blackout of light, a dimout curtain offers a softer atmosphere and allows just the right amount of light to filter through. These fabrics have a property that could block 75-80% sunlight from passing by. The versatile plains offer fabrics that are combined and juxtaposed to create comfort in any interior.



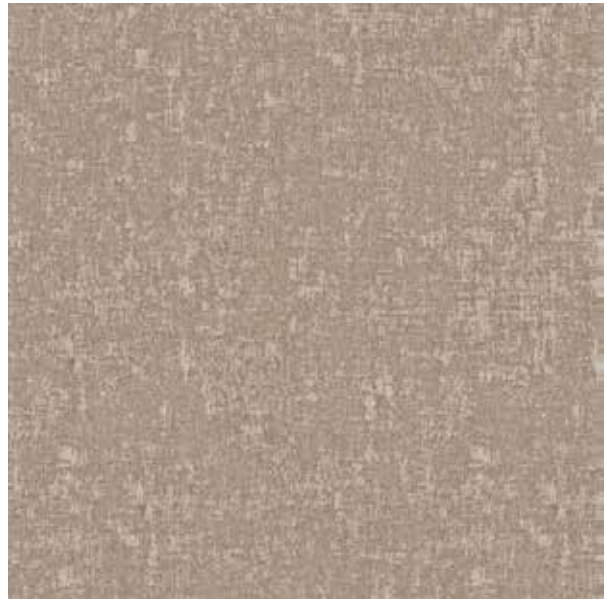
GARNET

(12 Colourways)

This fabric has a plentiful texture on a multiple weave. The soft feel and flowing fall of the shiny and matt yarns are in contrast. Garnet adds coziness to the interior. Opaque with a slight shiny effect, this woven fabric is well suited for modern window covering.



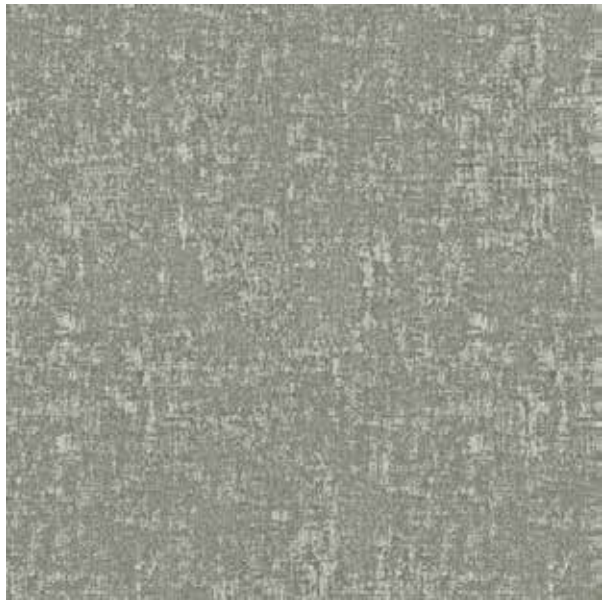
Garnet-Aqua



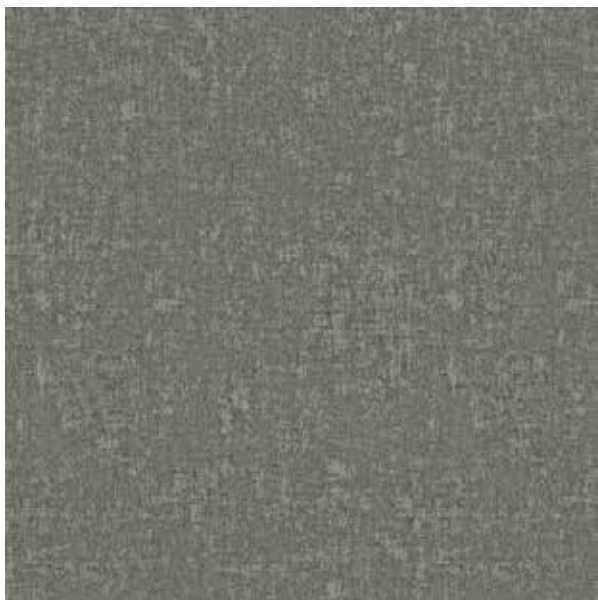
Garnet-Blush



Garnet-Flint



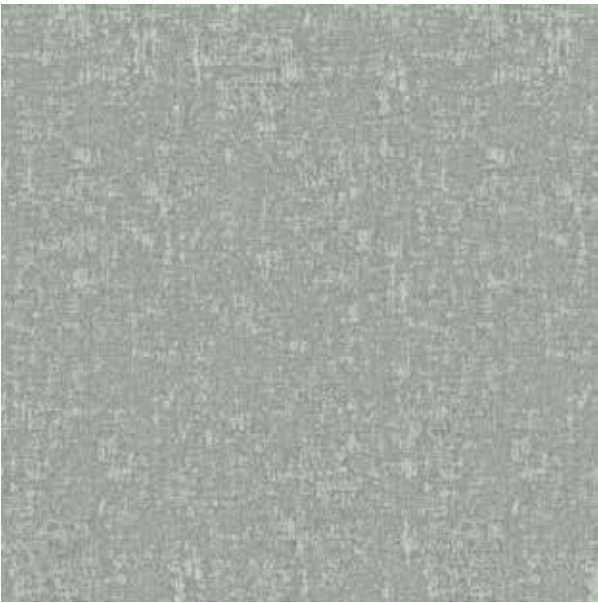
Garnet-Fog



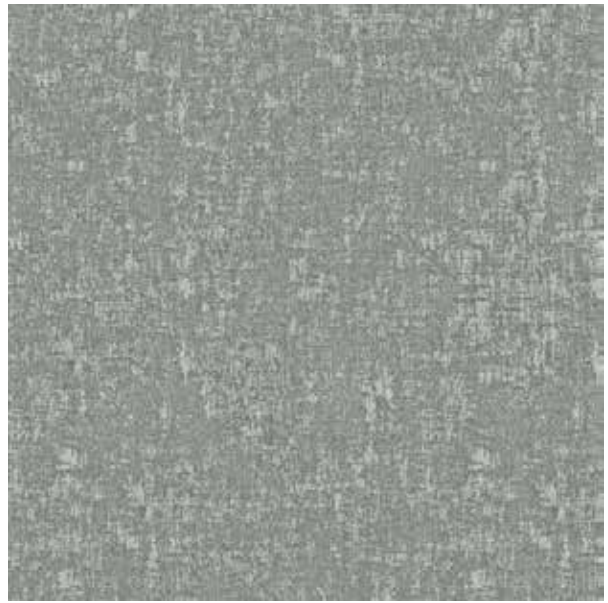
Garnet-Greystone



Garnet-Metal



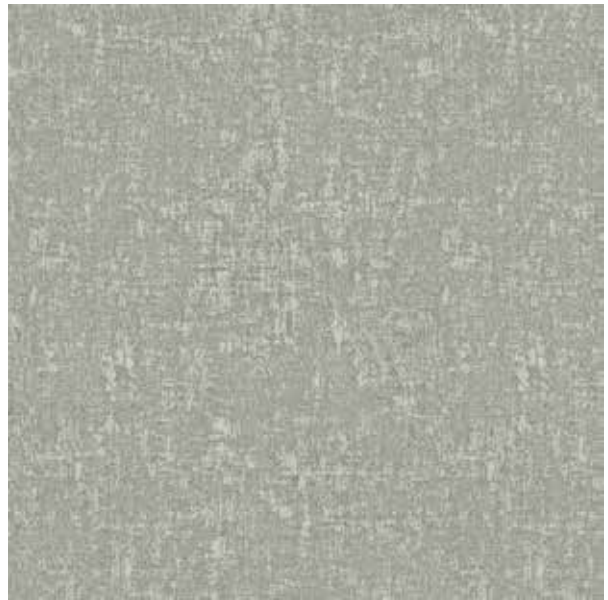
Garnet-Mint



Garnet-River



Garnet-Sand



Garnet-Silver








Garnet-Taupe



Garnet-Willow



Technical Details

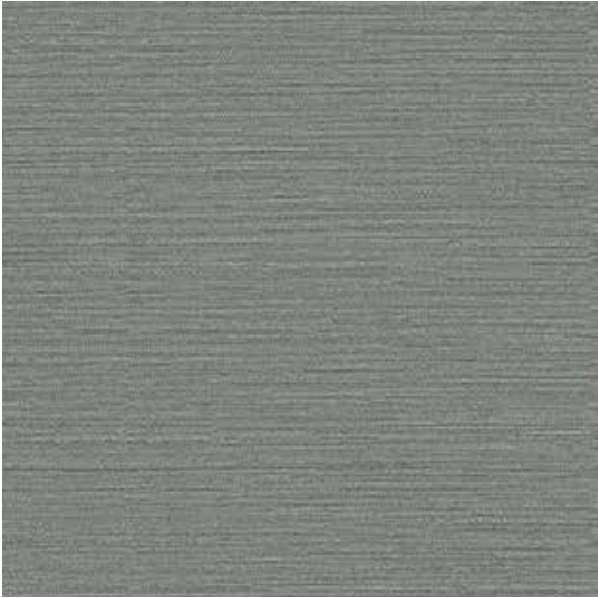
Product Name : Garnet	Rec. Usage : 
Width in CM : 140	Care Instructions :    
Repeat size in CM : Hor (23.8) x Ver (59.2)	Martindale : NA
Composition : 78% PES, 22% CAT	Piling : 4
Weight GSM : 279	Colour Fastness : 4



JADE

(12 Colourways)

A weave that combines the lustrous texture of the yarn with subtle colors. The fabric has a slubbed canvas with an irregular luminous appearance. This versatile fabric has a very comfortable hand-feel and is suitable for curtains.



Jade-Aqua



Jade-Blush



Jade-Clay



Jade-Dove



Jade-Flint



Jade-Frappe



Jade-Greystone



Jade-Mint



Jade-sand



Jade-Silver









Jade-Wheat



Jade-Willow



Technical Details

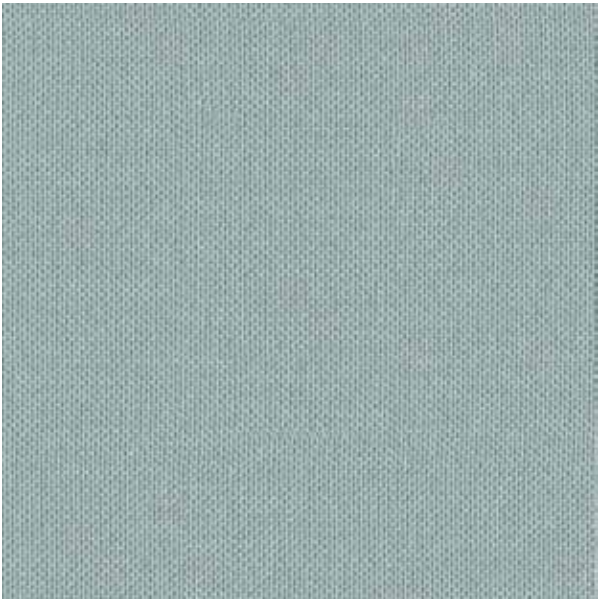
Product Name : Jade	Rec. Usage :  
Width in CM : 140	Care Instructions :    
Repeat size in CM : Hor (0) x Ver (0)	Martindale : NA
Composition : 100% PES	Piling : 4
Weight GSM : 323	Colour Fastness : 4



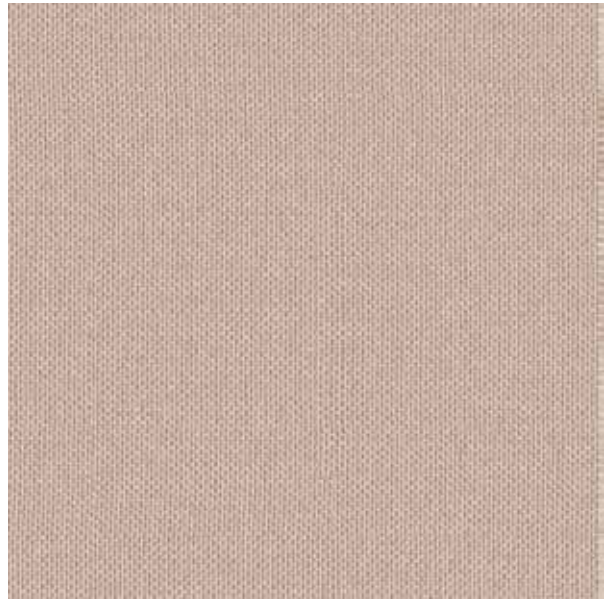
TOPAZ

(17 Colourways)

The basket woven fabric is a combination of polished yarns. It shows off a very rich and minimal aesthetic. Due to its finished look, it is ideal for curtains that combine the unquestionable elegance of timeless and refined shades.



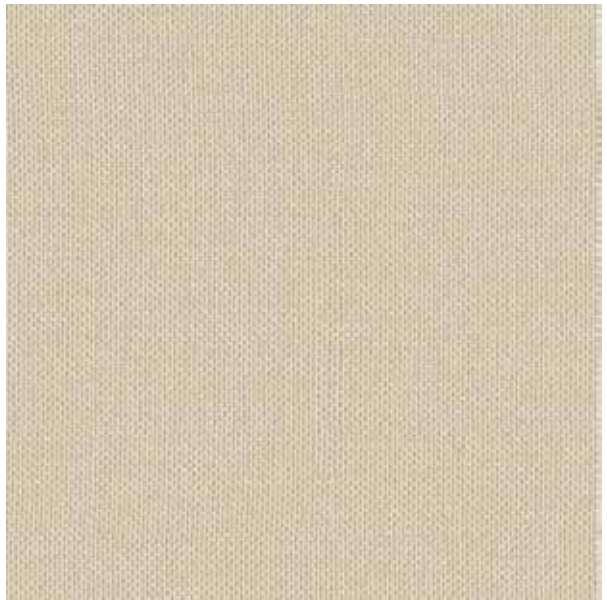
Topaz-Aqua



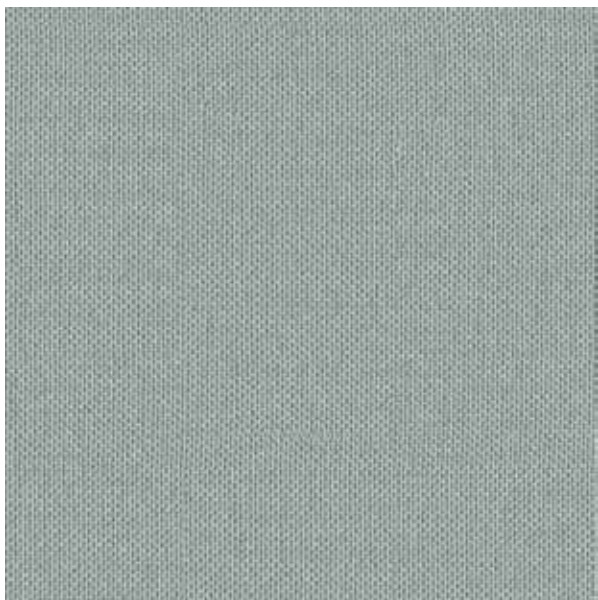
Topaz-Blossom



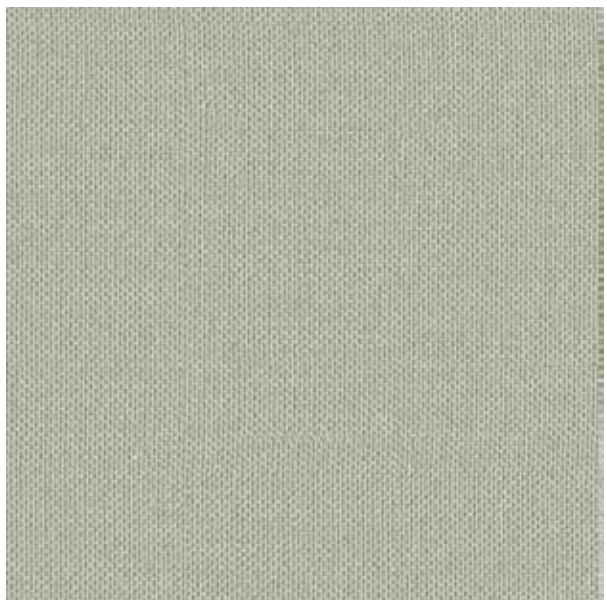
Topaz-Cashew



Topaz-Ecru



Topaz-Flint



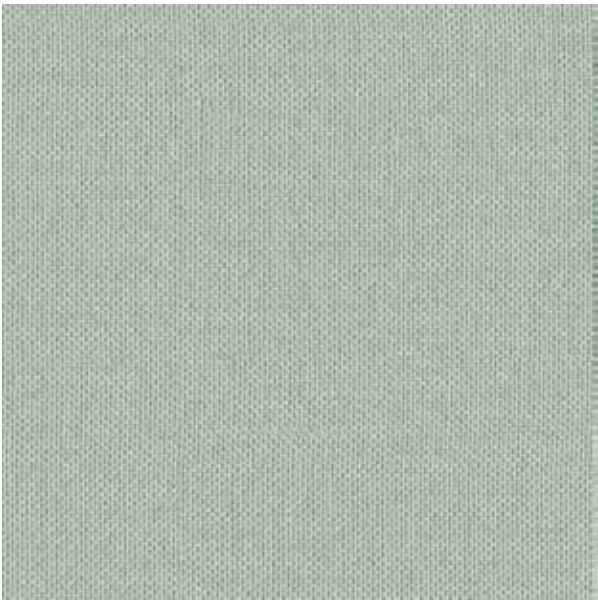
Topaz-Fog



Topaz-Greystone



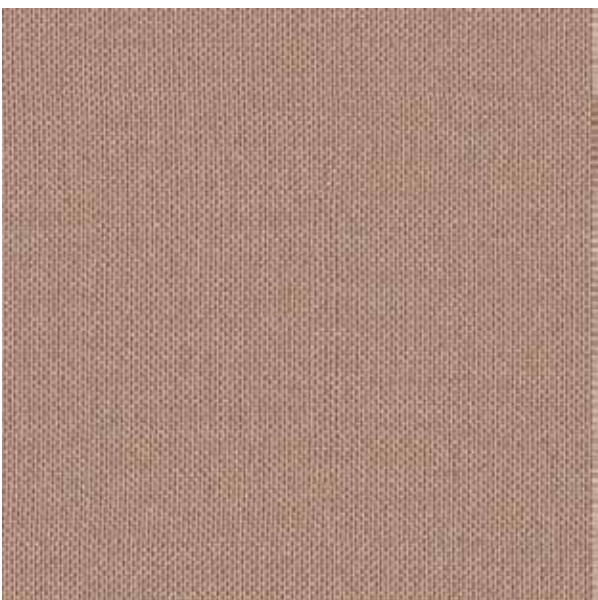
Topaz-Metal



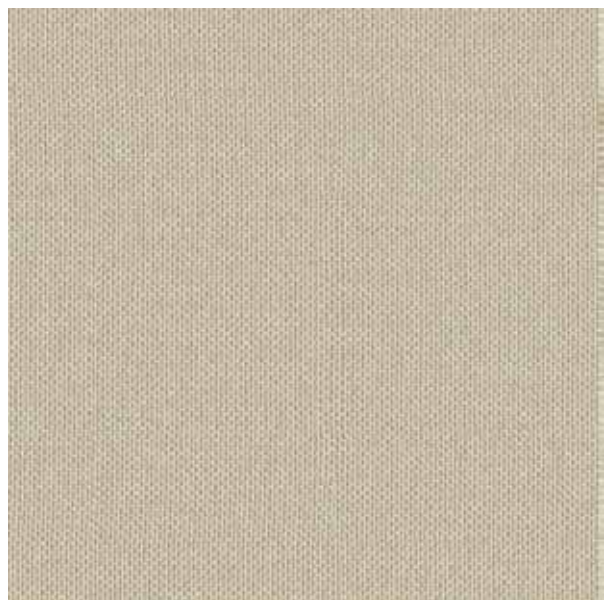
Topaz-Mint



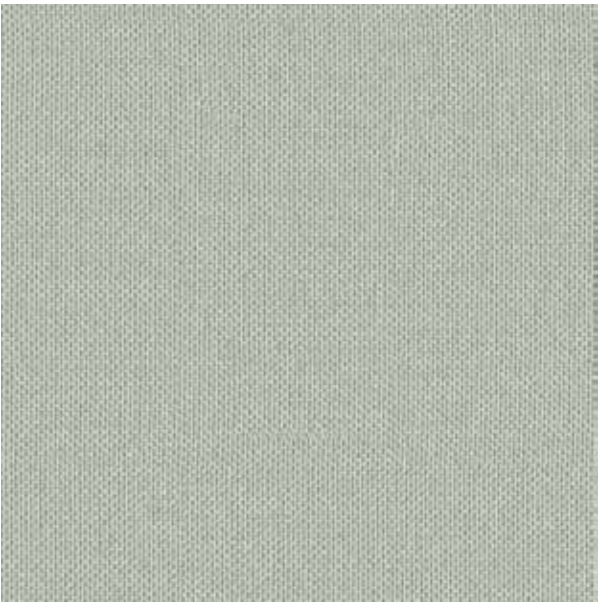
Topaz-Mushroom



Topaz-Peach



Topaz-Sand



Topaz-Silver



Topaz-Smoke



Topaz-Taupe









Topaz-Wheat




Topaz-Willow



Technical Details

Product Name : Topaz	Rec. Usage :  
Width in CM : 140	Care Instructions :    
Repeat size in CM : Hor (0) x Ver (0)	Martindale : NA
Composition : 80% PES, 20% CAT	Piling : 4
Weight GSM : 331	Colour Fastness : 4



For any further details, Please feel free to Contact

09643403802, 0124-4632300

**Corp. Off: Plot No: 42, Sector 32,
Institutional Area, Gurugram-122003, Haryana (India)**

Email: crm@fandf.in | Website: www.fandf.online