



F&F | FLOOR & FURNISHINGS

AROMA PLAINS

— FABRICS —

MARKETING BRIEF



AROMA PLAINS

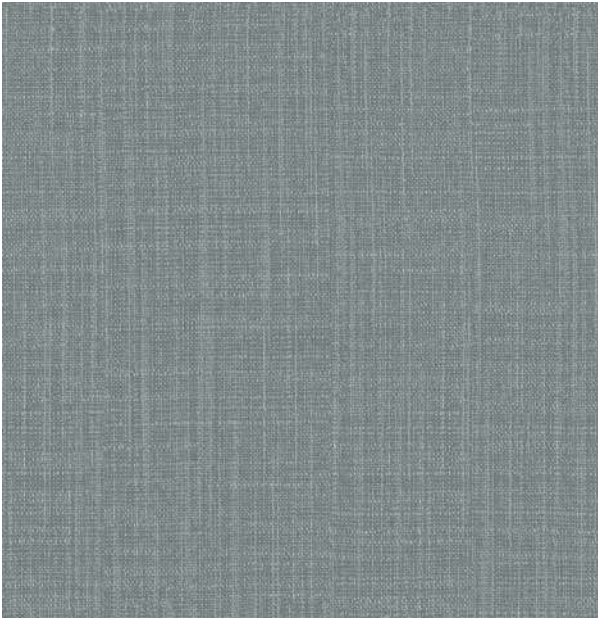
Aroma plains is a striking collection of textured-plains and small-scale weaves made from luxurious, high quality fibers. Soothing and beautifully blended shades of fabrics comprises a special selection of textured material. Each of the three qualities in the collection is suitable for curtains, which will elegantly unify with your space, making it look tranquilizing and comforting.



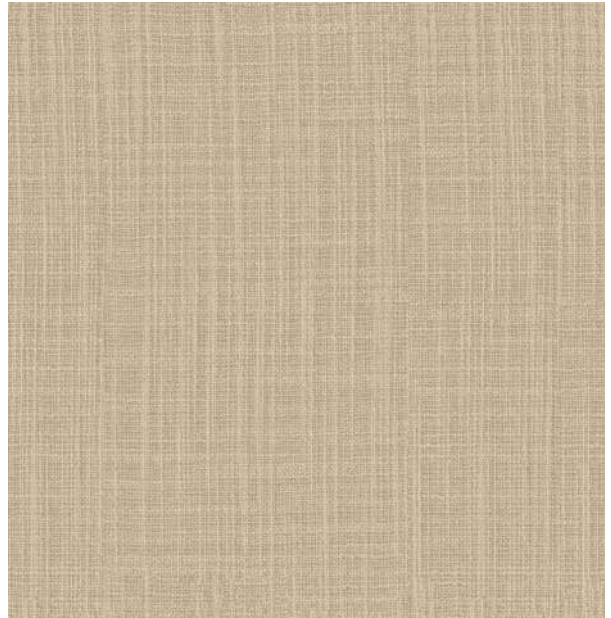
AROMA

(12 Colourways)

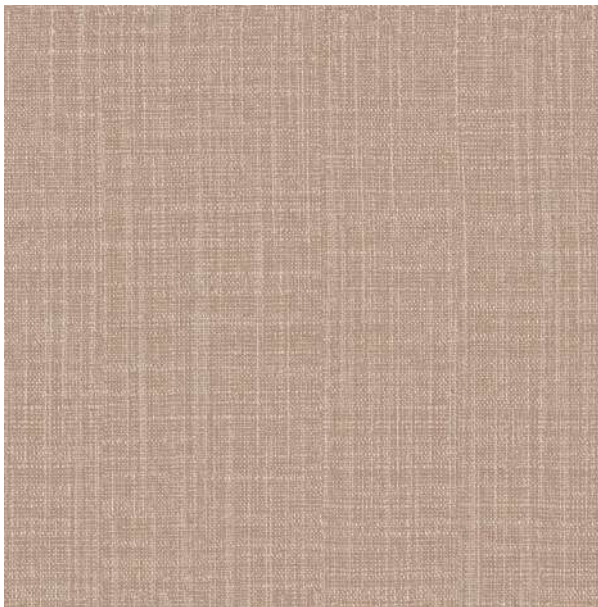
The criss-cross and slubbed yarns, creating a slightly raised, rich and soft texture. "Aroma" combines with the softness and sparkle to create an irregular yet comforting material, with flowing draping, perfect for making curtains.



AROMA-AQUA



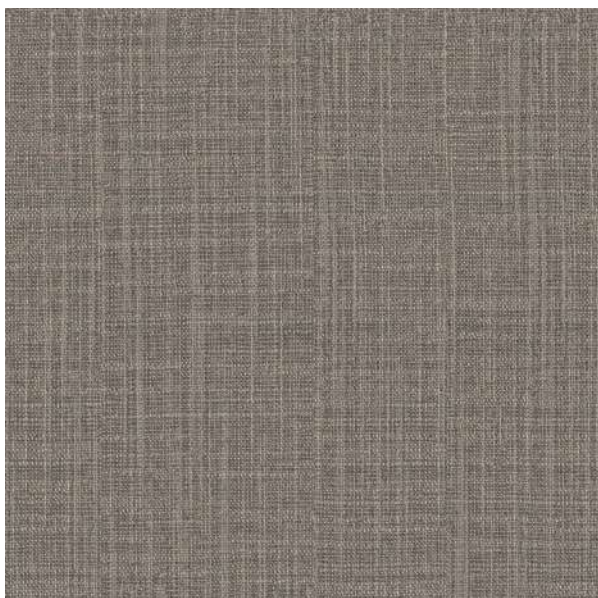
AROMA-BEIGE



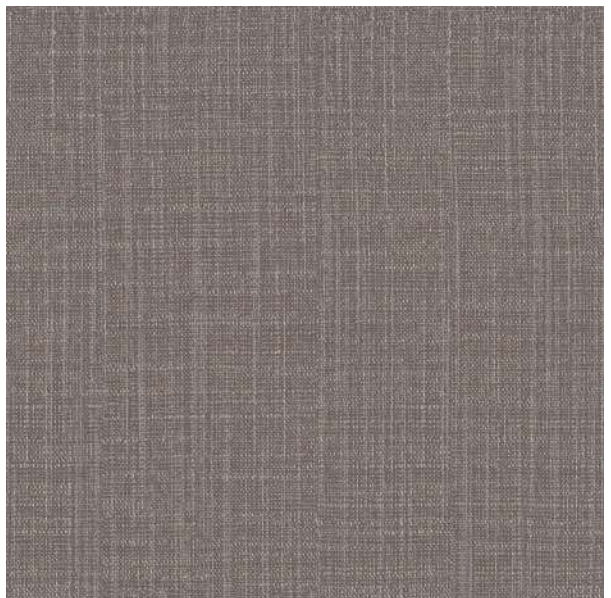
AROMA-BLOSSOM



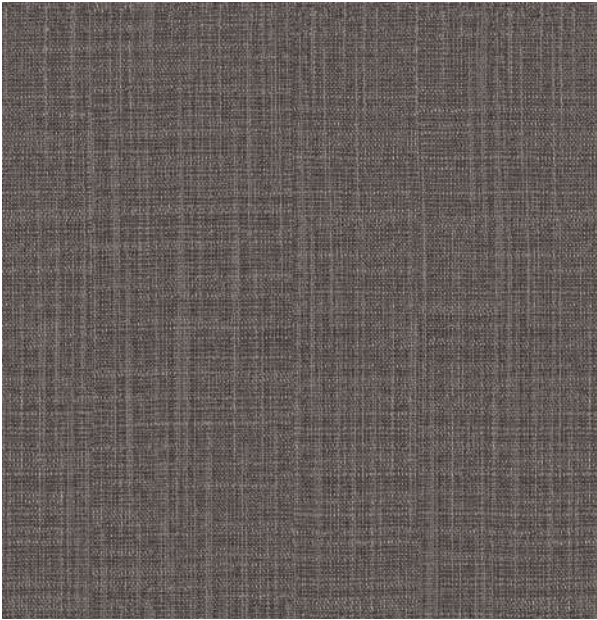
AROMA-BLUSH



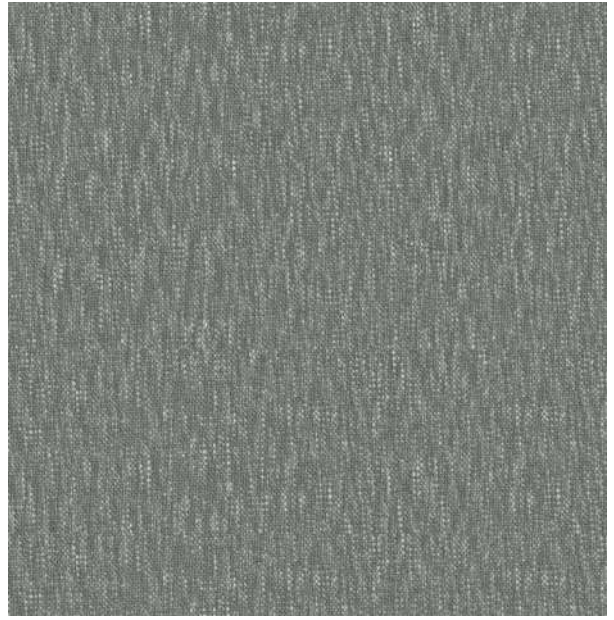
AROMA-EARTH



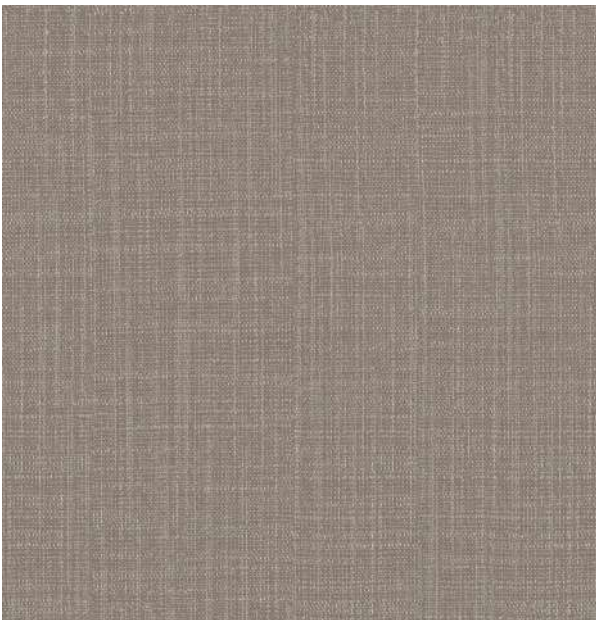
AROMA-FLINT



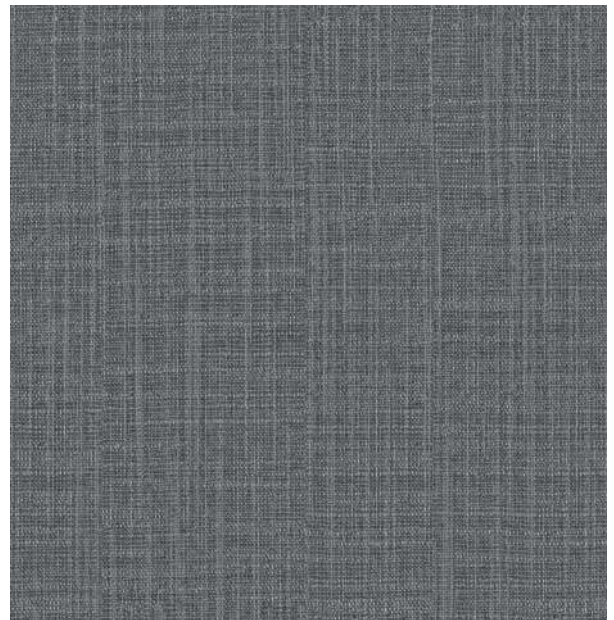
AROMA-GUNMETAL



AROMA-METAL



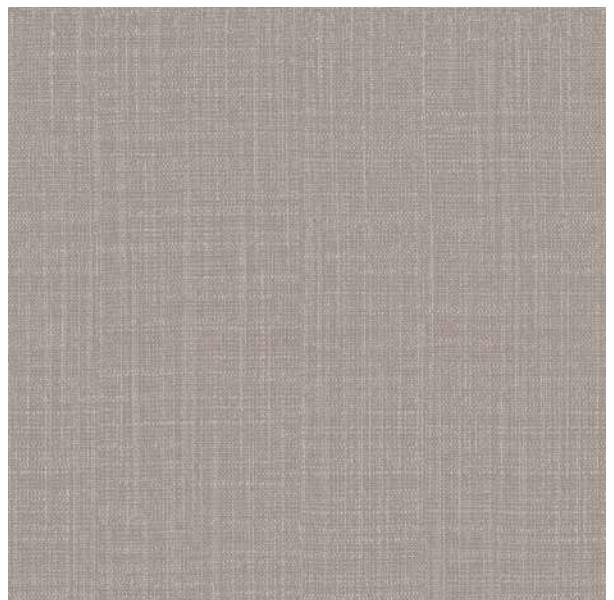
AROMA-MUSHROOM



AROMA-RIVER








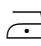
AROMA-WHEAT



AROMA-WILLOW



Technical Details

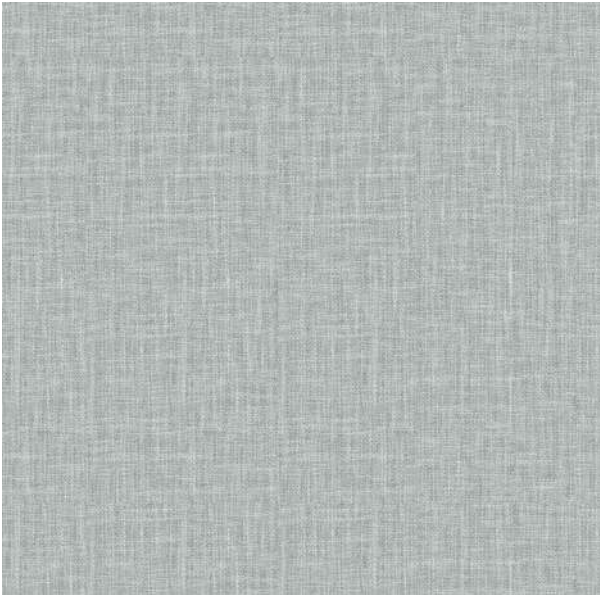
Product Name : Aroma	Rec. Usage :  
Width in CM : 140	Care Instructions :    
Repeat size in CM : Hor (0) x Ver (0)	Martindale : 20,000
Composition : 86% PES, 14% CAT	Piling : 2-3
Weight GSM : 288	Colour Fastness : 4



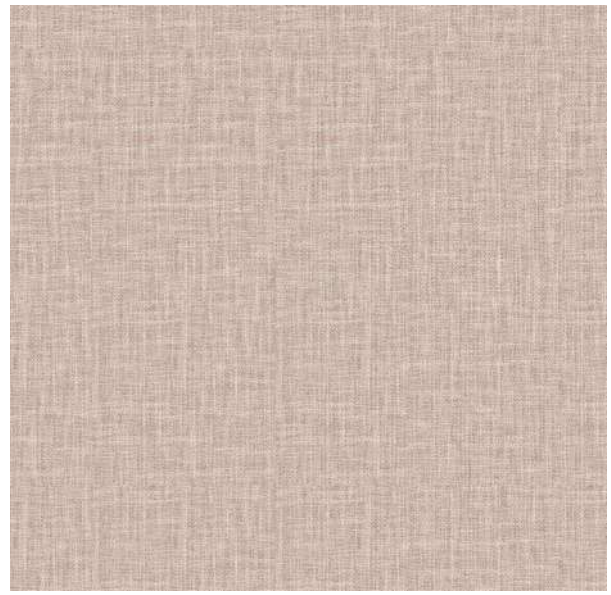
RYE

(11 Colourways)

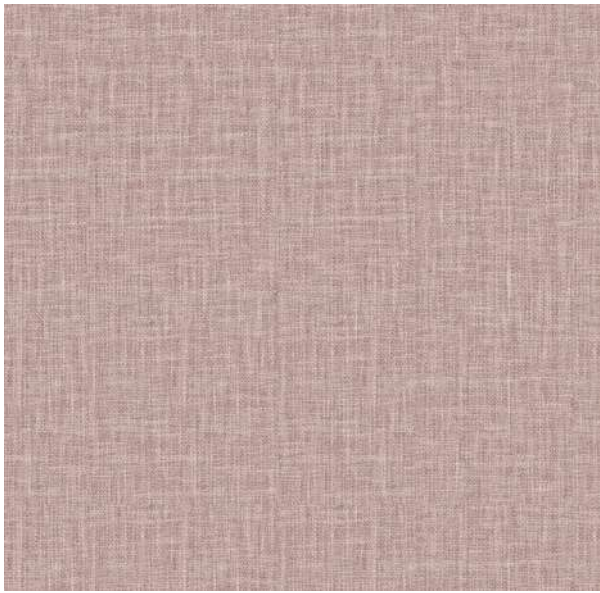
Designed for windows, Rye is woven in a handcrafted or a more sophisticated style. Supple and light, and blending with the most exclusive interiors with ten discrete and classic colors.



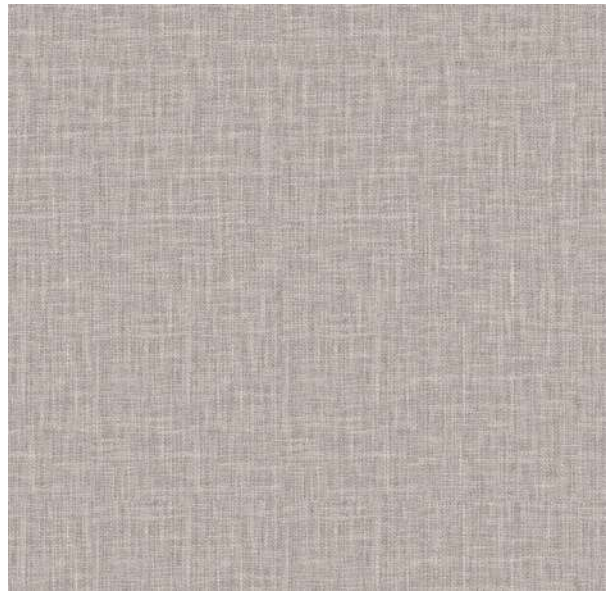
RYE-AQUA



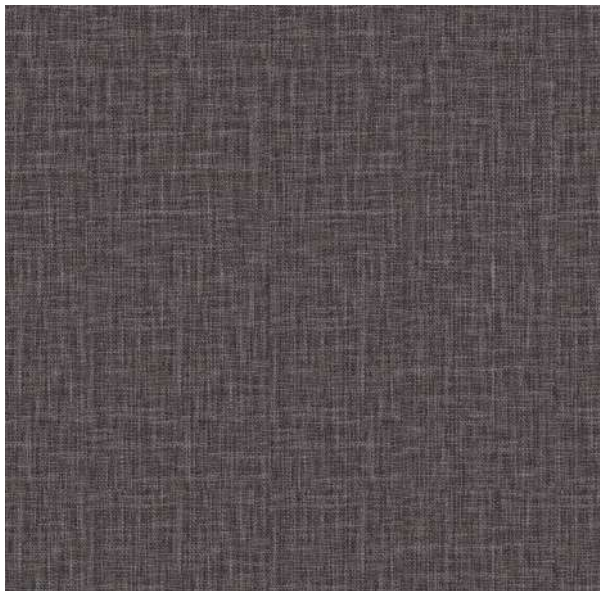
RYE-BLOSSOM



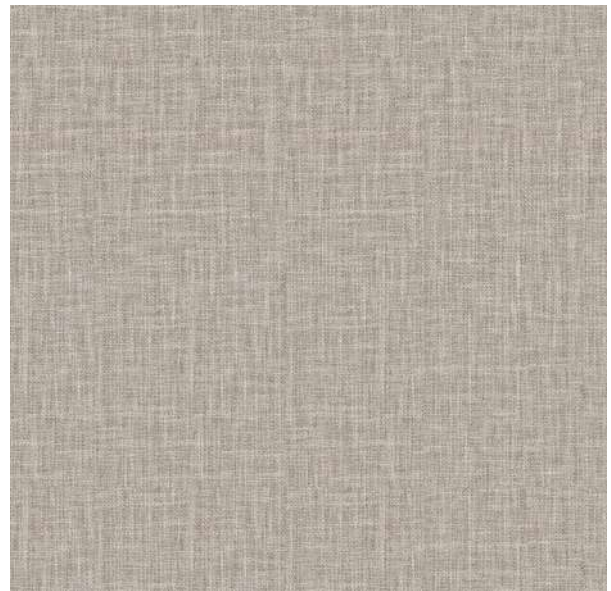
RYE-BLUSH



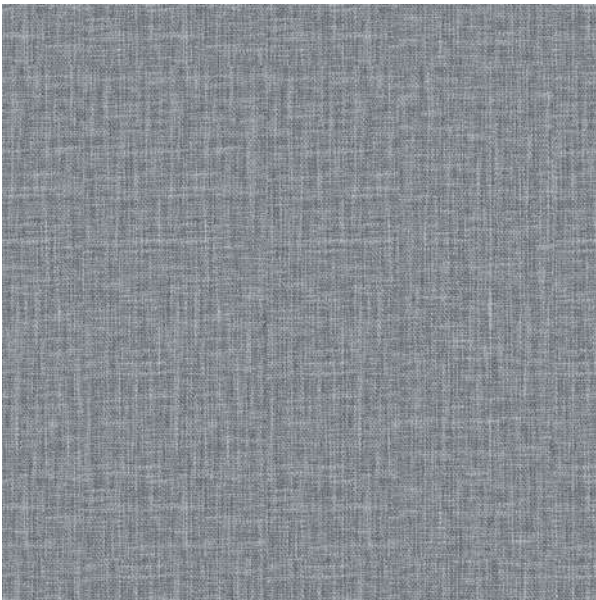
RYE-FLINT



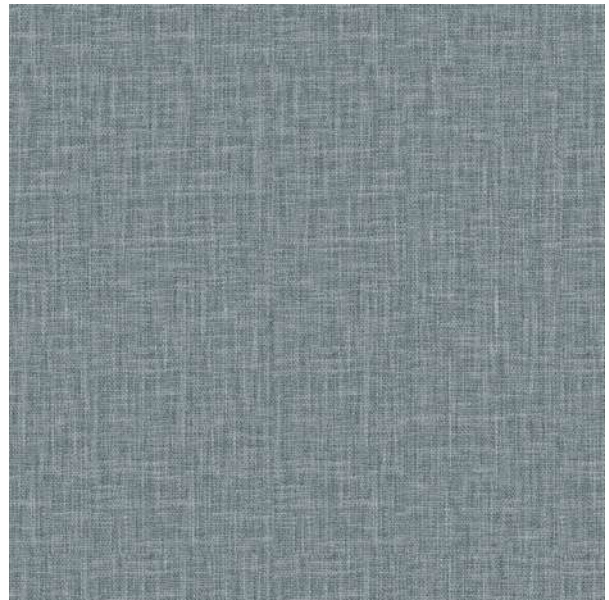
RYE-GUNMETAL



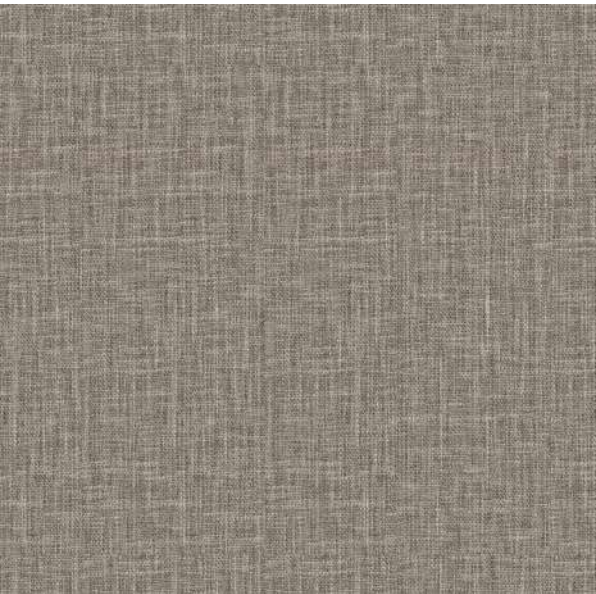
RYE-LINEN



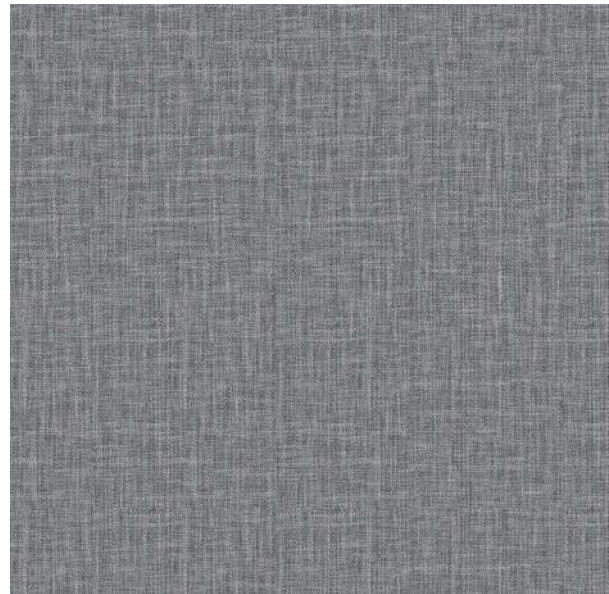
RYE-METAL



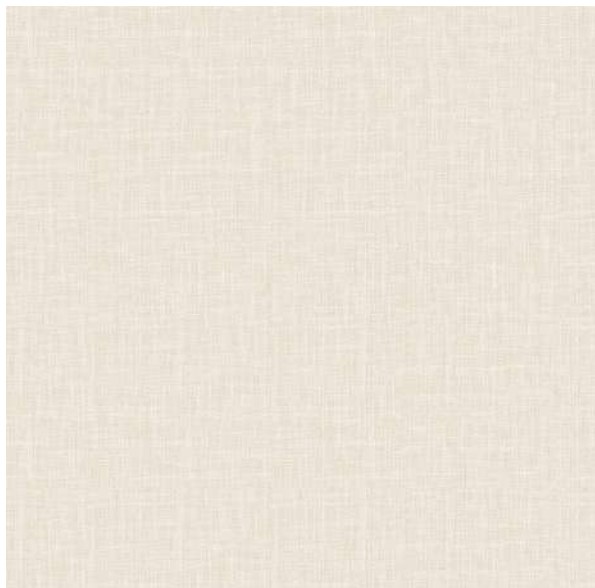
RYE-MINERAL



RYE-MUSHROOM



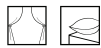

RYE-SMOKE



RYE-SNOW



Technical Details

Product Name : Rye	Rec. Usage : 
Width in CM : 140	Care Instructions : 
Repeat size in CM : Hor (0) x Ver (0)	Martindale : 20,000
Composition : 48% PES, 52% CO	Piling : 3
Weight GSM : 300	Colour Fastness : 4



For any further details, Please feel free to Contact

09643403802, 0124-4632300

**Corp. Off: Plot No: 42, Sector 32,
Institutional Area, Gurugram-122003, Haryana (India)**

Email: crm@fandf.in | Website: www.fandf.online